

Electric Crawler Crane

MODEL EC135



Eco-friendly



100% electric



Less noise



Zero emission



PV-E Crane B.V.
Everdenberg 17
4902 TT Oosterhout

+31 (0)184 - 425 949
www.pv-ecrane.com
info@pv-ecrane.com



PV-E CRANE

PV-E CRANE

We, PV-E Crane B.V., are pleased to offer you our electric crawler crane EC Series. All models from the crane PV-E Crane EC series are equipped with an electric motor with a power of 150KW or 200kW and exchangeable battery packs with a total capacity of 260kWh.

With the standard version, you can work for 8 hours without a plug. If extra working hours are required, this can easily be done by renting or buying an extra battery pack.

The two battery packs are based on lithium iron phosphate batteries (LiFePO4) and are built according to the latest developments in traction cell technology and have many advantages:

- Safe
- Chemically stable
- Long lifespan
- Can be charged from any charge level without shortening lifespan
- Not subject to memory problems
- Efficient

Charging with 45kWh per hour from a 63 Amp connection means less than 3 hours per battery (130kWh) of full charging from empty to full.

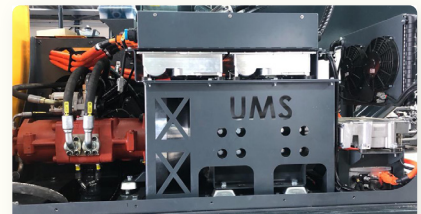
Moreover, (LiFePO4) batteries are 100% maintenance-free and do not need to be topped up with demineralized water like conventional lead-acid batteries, for example. They are 100% recyclable because they do not contain any acids or heavy metals.

An external diagnostic system gives you access to the crane's electronics to read the required data of the crane from your office.



Battery pack

PV-E Crane Battery Powered



Electric motor

PV-E Crane Battery Powered



Electronic control system

PV-E Crane Battery Powered

CONTENTS

1 Technical data	Pagina 4
2 Notes	Pagina 5
3 Specifications	Pagina 6
4 Features	Pagina 7
5 Dimensions	Pagina 8
6 Basic configuration	Pagina 9
7 Machine configuration	Pagina 10
8 Dimensions	Pagina 11 t/m 12
9 Working radius Main boom	Pagina 13
10 Load chart Main boom	Pagina 14
11 Working radius Runner	Pagina 15
12 Load chart Runner	Pagina 16
13 Working radius- Fixed Jib	Pagina 17
14 Load Chart - Fixed Jib	Pagina 18 t/m 22
15 Working Radius Luffing Jib	Pagina 20
16 Load Chart Luffing Jib	Pagina 24 t/m 35
17 Main boom configurations	Pagina 36
18 Fixed jib and luffing jib configurations	Pagina 37
19 Transport Dimensions and weights	Pagina 38 t/m 42
20 Self-assembly	Pagina 43



TECHNICAL DATA

Items	Unit	Data
Max. rated lifting capacity	t	135@5m
Mainboom length	m	18-75
Fixed jib Length	m	13-31
Mainboom + fly jib max. lenght	m	63+31
Mainboom + luffing jib max. lenght	m	48,5+49
Runner jib	t	12,5
Boom dericking angle	°	30-84
Hook blocks	t	135/80/25/12,5
Main winch hoist, lower (rope dia 26mm)	m/min	120
Aux. winch hoist lower (rope dia 26mm)	m/min	120
Boom hoist lower (rope dia 26mm)	m/min	48
Swing speed	r/min	2,7
Travel speed	Km/h	0-0, 78/0-1,15
Reevings		12
Single line pull	t	12,5
Electro motor	kW	200
Accu (lithium iron phosphate)	kWh	260
Swing radius	mm	5530
Transport dimension	mm	13680x3300x3300
Crane mass (with basic boom, 135t hook)	t	130
Ground bearing pressure	Mpa	0,08
Counterweight	t	54

NOTES | LOAD

- 1** The load charts are calculated according to EN13000.
- 2** The lifting capacities are for reference only. For actual lifting capacities please refer to the load chart in the cabin or operation manual. The lifting capacities as stated are only valid for lifting activities.
- 3** The rated loads shown are based on the machine on firm horizontal ground level.
- 4** The weights of the lifting accessoires (Hook Blocks, ropes, chains etc.) have to be deducted from the load capacities mentioned.
- 5** The maximum windspeed allowed can be selected within the software of the momentlimiter.
- 6** The radius will be calculated from the center of the machine to the position under the load.
- 7** The lifting capacities apply to 360 degree working.
- 8** Weights mentioned can vary depending on the scope of supply of the specific machine delivered, the content of the tank and the general acceptable tolerances.
- 9** The images in this brochure can show options which are not standard.

Jib length (m)	13	19	25	31	Runner
Weight (t)	1,5	1,7	1,9	2,1	0,2

Hook	Reevings Self-Weight (t)	Reevings and max. lifting capacities (t)											
		12	11	10	9	8	7	6	5	4	3	2	1
135t	2.809	120	110	100	90	80	70	60	50	40	30	20	10
80t	1.030					80	70	60	50	40	30	20	10
25t	0,435											20	10
12,5t	0,328												10

SPECIFICATIONS



ENGINE

200kWh electro motor



HYDRAULIC SYSTEM

Rextroth main pump
ISO standard
Capacity oil tank: 540L



BATTERY PACK

2 x 130 kWh = total 260kWh / 650 volt
Standard 8 working hours disconnected from the grid
Interchangeable battery pack
Rechargeable in 3 hours (63A) per battery (130kWh)
Active Cooling



CERTIFICATIONS

CE - product complies with the European requirements in the field of safety, health and the environment
EMC - Electromagnetic compatibility



MOMENT LIMITER

Hirschmann



ADVANTAGES

100% Fuel saving
100% NOX free
100% CO2 free
100% Electric
100% SSSST....

FEATURES

SWING SYSTEM

Inner gearing swing drive, independent closing system 360 rotation. Swing lock: hydraulic swing locking, ensure to lock the upper structure when finish the operation and during transportation. Swing float: make sure the boom center and gravity of load be in the same plane. To avoid wiggle happens after lifting the load. Brake: automatic brake mode; spring applied, hydraulically released disc brakes.

SWING SYSTEM

Extreme durable and lean design, fully computer aided designed and optimized.

Made of high grade steel for long life time. All components are well organized mounted.

In the spacious engine and hydraulic compartments.

Excellent access by large doors for easy maintenance. Cover top plates made of aluminum to offer anti-skid safety and resist sun and rain.

Counterweight: 54t

ELECTRIC SYSTEM

24V system with comprehensive layout and high grade wiring.

Premium quality connectors and switches for best safety and reliability. Well organized electric switch board in sliding box for easy maintenance.

MAIN WINCH 1&2

Each winch is driven independently by a hydraulic piston motor. Each motor is equipped with counterbalance valves to provide controlled load lowering and prevent accidental load drop if the hydraulic pressure is suddenly lost. Automatic brake mode, spring applied, hydraulically released, multiple-disc type brake. Drum: line type drum, to ensure no rope disorder even when more layers.

Winch 1 & 2

Single line pull: 12,54t

Rope diameter: 26 mm

Line speed: 0-120m/min

DERRICKING WINCH

Driven independently by a hydraulic piston motor provided with counterbalance valves.

Automatic brake made, spring applied, hydraulically released, disc type brake.

Mechanical drum pawl lock supplies full orientation brake.

Derricking winch

Single line pull: 10t

Rope diameter: 22 mm

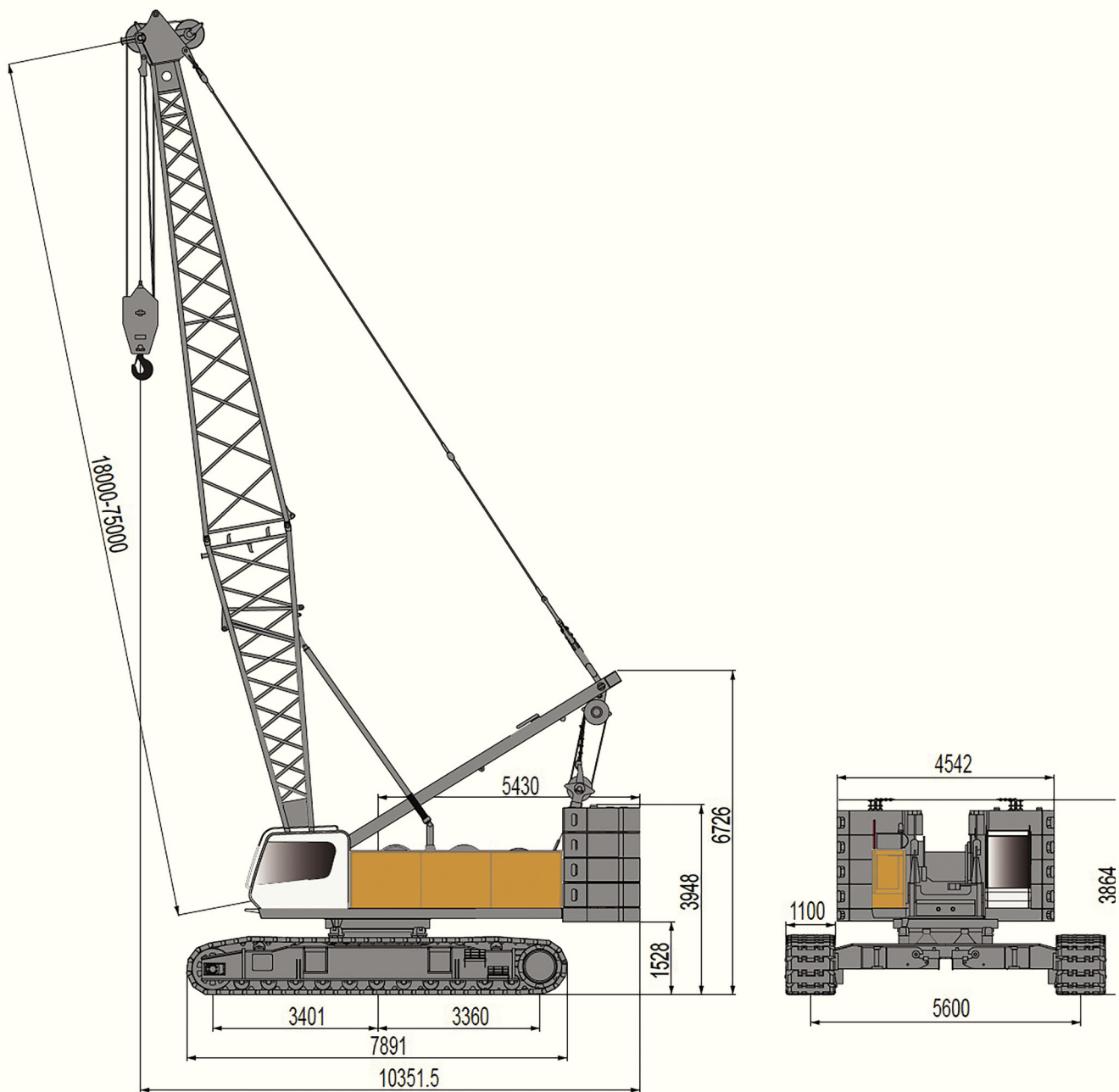
Line speed: 48m/min

UNDERCARRIAGE

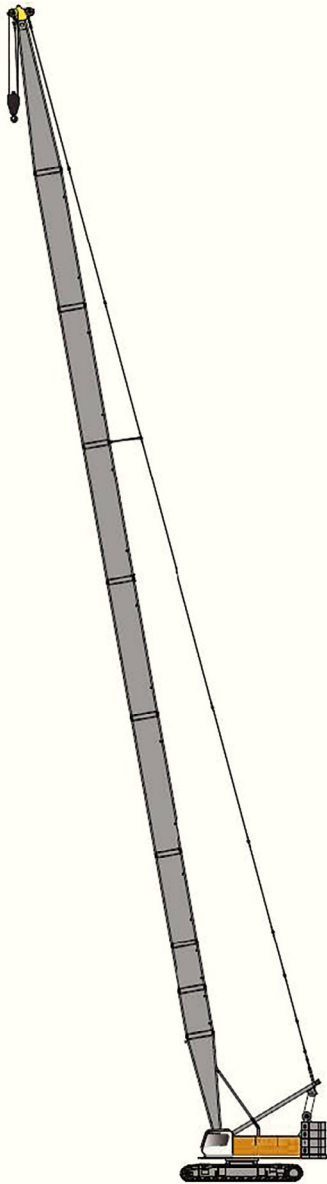
Each track is independently driven by a hydraulic piston motor. Spring loaded hydraulically releasable automatic type, disc brake.

Traveling speed: 0-1,33km/h

DIMENSIONS

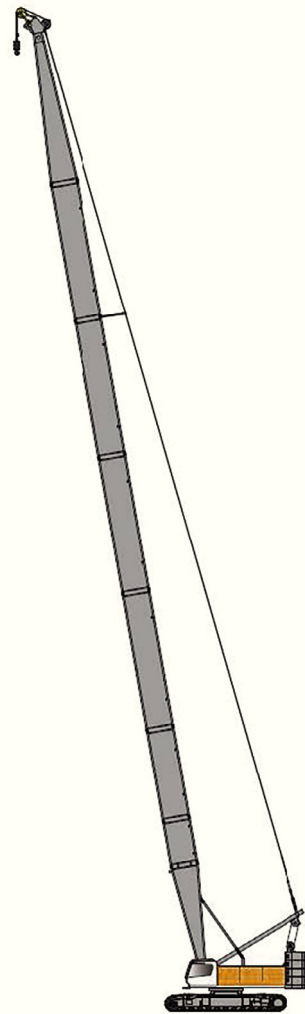


MAIN BOOM & RUNNER CONFIGURATION



MAIN BOOM

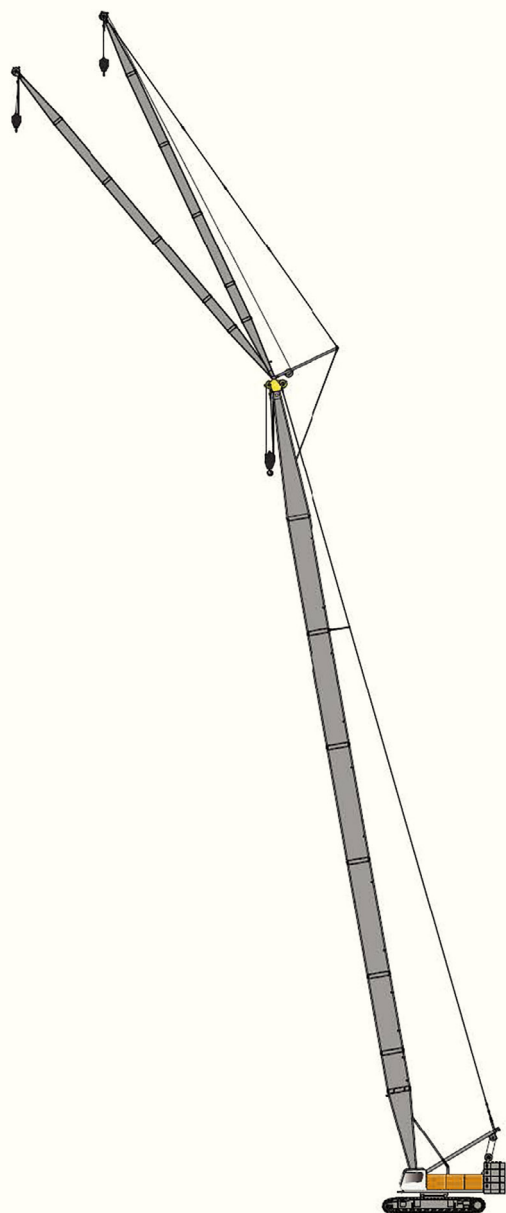
Max. lifting capacity: 135t x 5m
Max. Boom length: 75m



RUNNER

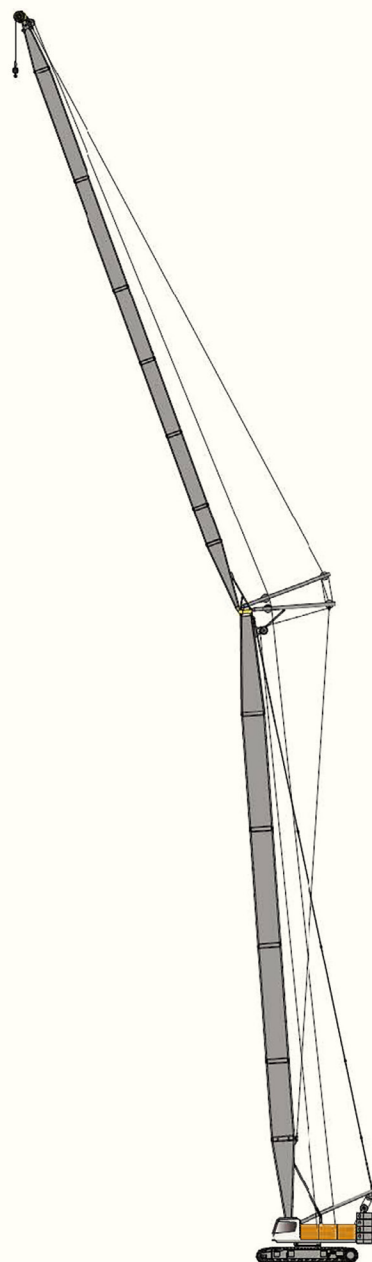
Max. lifting capacity: 12t x 16m
Max. boom length: 63m

FIXED JIB AND LIFFING JIB CONFIGURATION



FIXED JIB

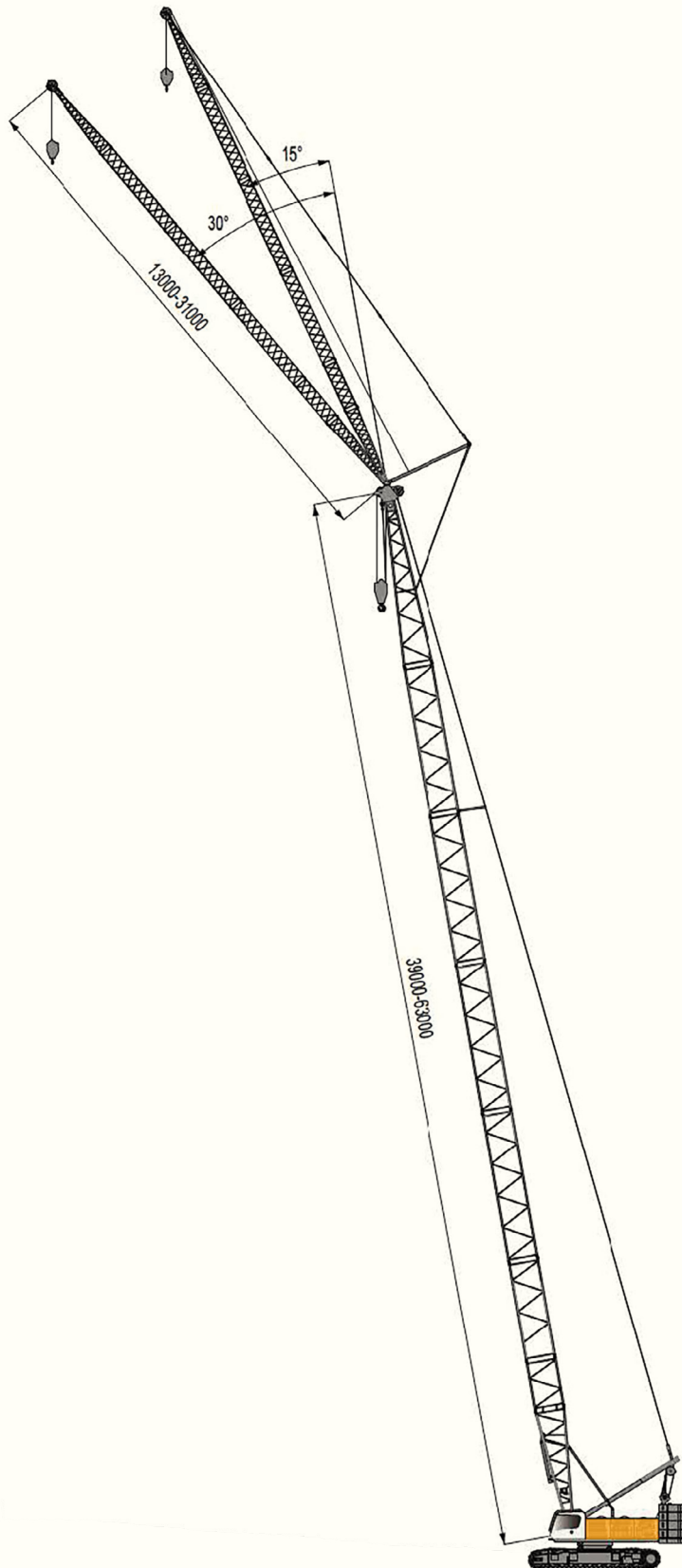
Max. lifting capacity : 14.6t x 14m
Max. boom length : 63m + 31m



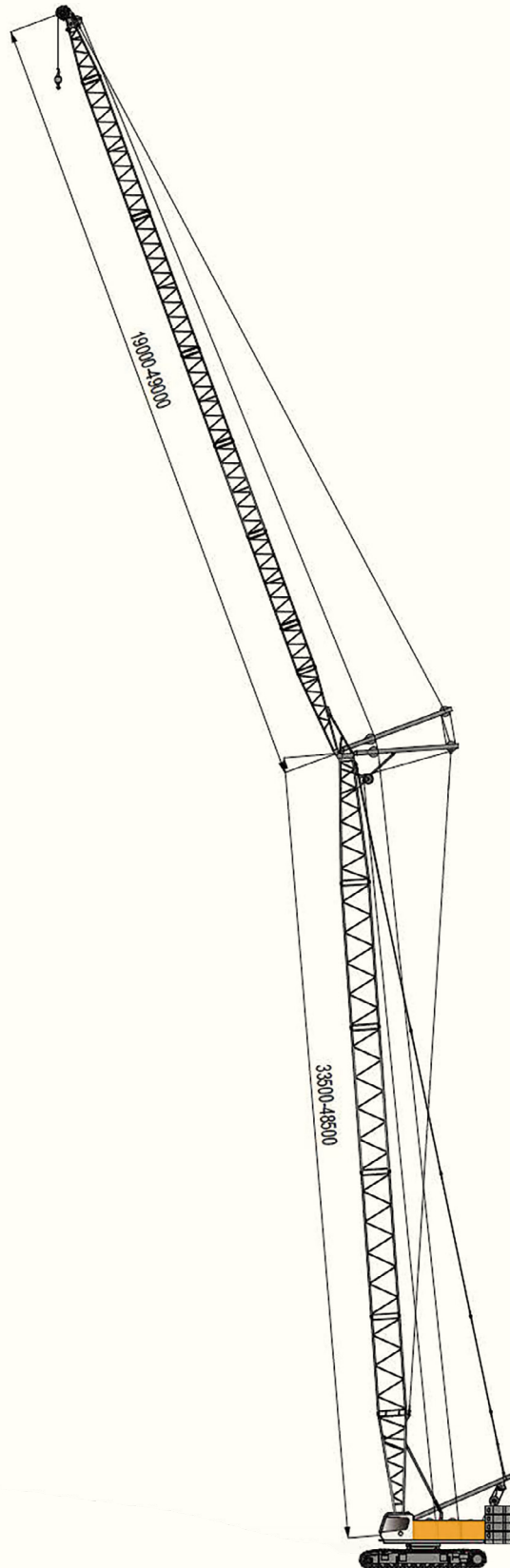
LUFFING JIB

Max.lifting capacity : 34t x 12m
Max. boom length : 48.5m + 49m

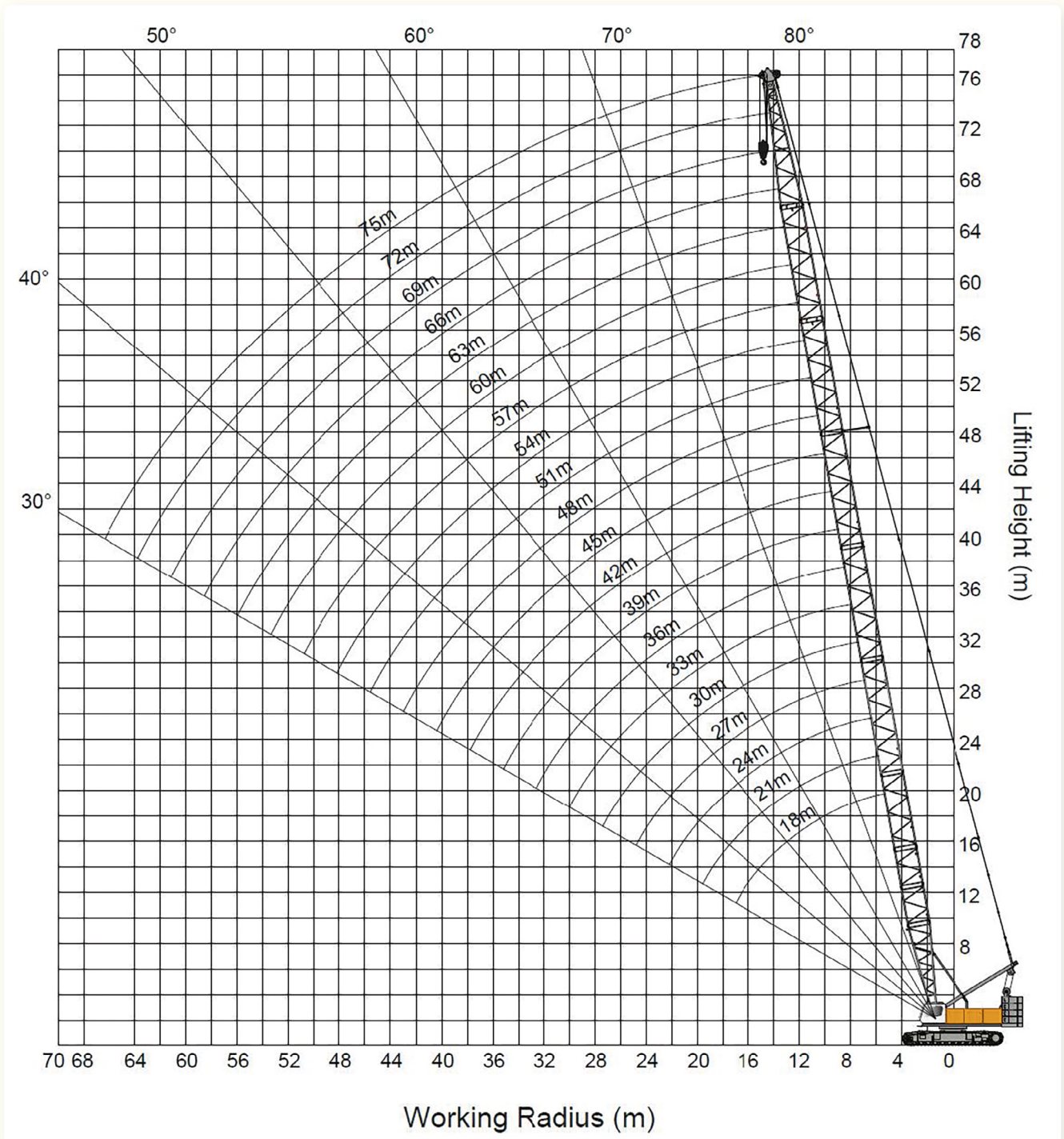
FIXED JIB DIMENSIONS



LUFFING JIB DIMENSIONS



WORKING RADIUS | MAIN BOOM



LOAD CHART | MAIN BOOM



18m - 75m



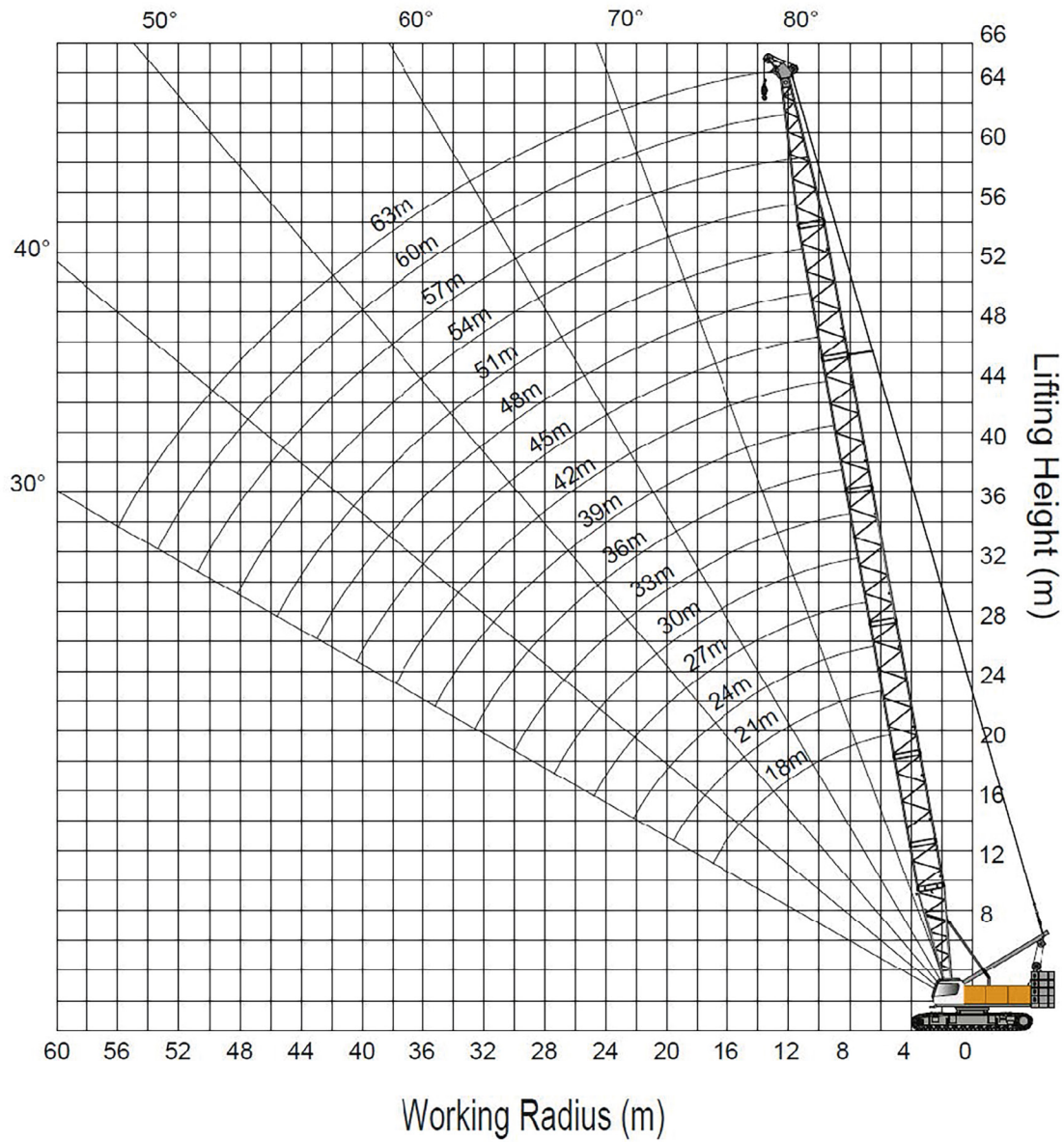
360°



54t

Length(m) Radius(m)	18.0m	24.0m	30.0m	36.0m	42.0m	48.0m	54.0m	60.0m	66.0m	72.0m	75.0m
4.0m	135/4.92										
5.0m	135.0	120/5.96									
6.0m	120.0	120.0									
7.0m	110.0	109.0	90.0								
8.0m	88.9	89.0	90.0	78/8.05							
9.0m	78.0	75.6	88.6	72.6	66.5/9.09						
10.0m	67.5	65.5	63.2	63.1	61.8	56/10.1	45/11.2				
12.0m	51.8	51.7	50.3	48.6	48.4	48.1	45.0	36/12.2	29/13.3		
14.0m	41.7	41.9	41.5	40.2	39.1	38.8	38.6	36.0	29.0	21.4/14.3	
16.0m	34.8	34.9	34.8	33.9	33.1	33.0	32.7	31.8	29.0	20.6	18.2
18.0m	30.16/17.2	29.8	29.7	29.3	28.6	28.4	28.3	27.0	26.8	19.6	17.4
20.0m		25.9	25.8	25.4	25.0	24.8	24.6	23.7	23.0	18.7	16.5
22.0m		22.8	22.7	22.3	22.2	21.8	21.6	21.0	20.6	18.0	15.8
24.0m		21.25/22.4	20.2	19.8	19.6	19.3	19.0	18.5	18.2	17.5	15.1
26.0m			18.0	17.7	17.6	17.2	16.9	16.4	16.2	15.6	14.4
28.0m			15.83/27.6	15.9	15.8	15.4	15.2	14.7	14.6	14.0	13.5
30.0m				14.4	14.3	13.9	13.5	13.0	13.0	12.6	12.2
32.0m				13.0	12.9	12.5	12.4	12.0	11.7	11.4	11.0
34.0m				12.32/32.8	11.8	11.4	11.2	10.8	10.6	10.3	9.9
36.0m					10.8	10.5	10.3	9.8	9.5	9.2	8.8
38.0m					9.9	9.5	9.4	9.0	8.7	8.3	8.0
40.0m						8.7	8.6	8.2	7.9	7.5	7.3
42.0m						8.0	7.9	7.4	7.3	7.0	6.5
44.0m						7.587/43.2	7.3	6.9	6.5	6.2	6.0
46.0m							6.5	6.3	6.0	5.7	5.4
48.0m							6.0	5.8	5.6	5.2	4.9
50.0m							5.954/48.4	5.3	5.0	4.8	4.5
52.0m								4.9	4.6	4.4	4.1
54.0m								4.575/53.6	4.3	4.0	3.7
56.0m									3.9	3.6	3.3
58.0m									3.6	3.3	3.1
60.0m									3.3/58.8	2.9	2.7
62.0m										2.7	2.4
64.0m										2.4	2.1

WORKING RADIUS | RUNNER



* Preliminary lifting table, may deviate after calculations / adjustments

LOAD CHART | RUNNER



25m - 61m



360°

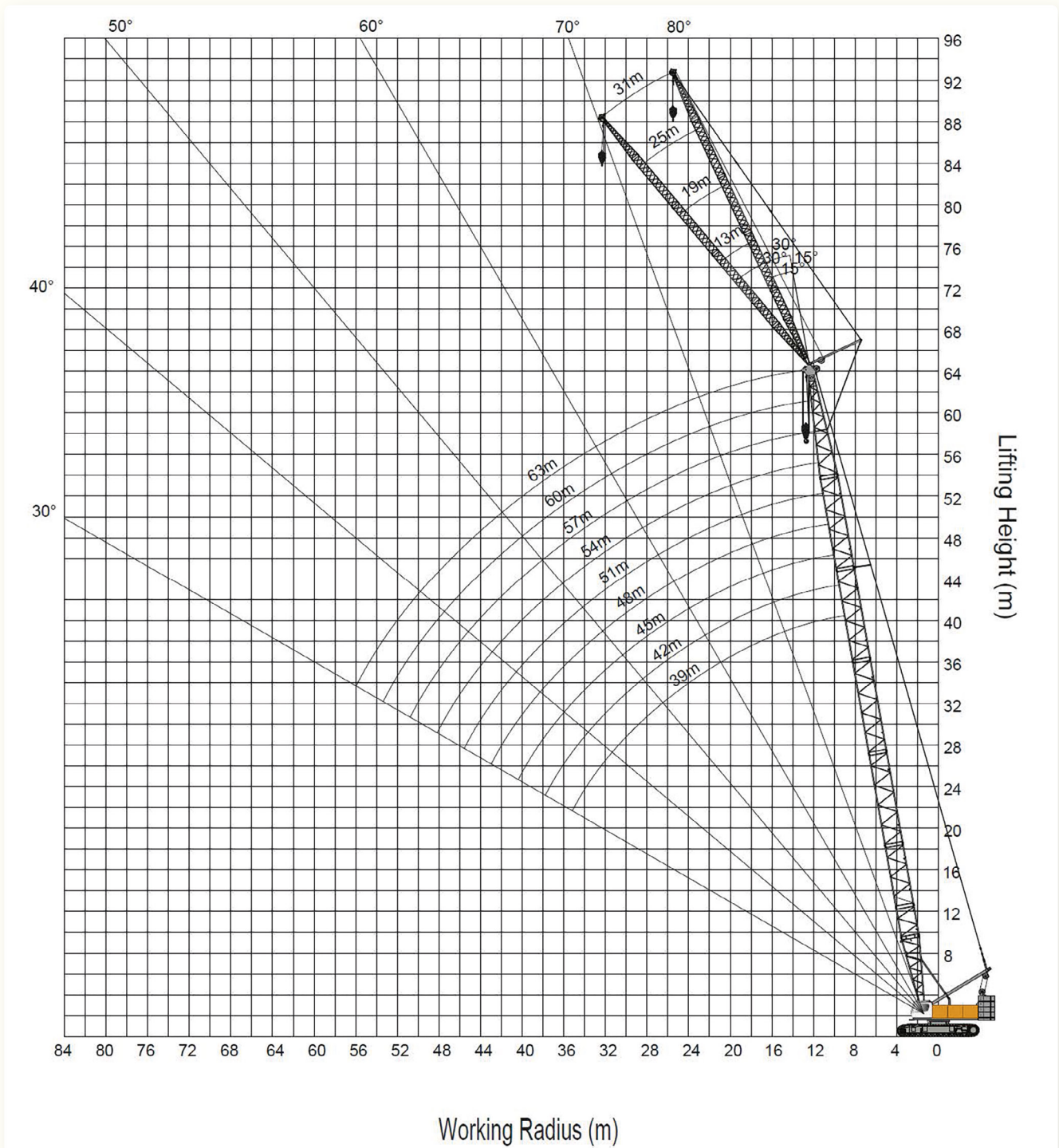


54t

Length(m) Radius(m)	25.0m	28.0m	31.0m	34.0m	37.0m	40.0m	43.0m	46.0m	49.0m	52.0m	55.0m	58.0m	61.0m
6.0m	6.7×9.0												
7.0m	9.0	7.3×9.0	7.9×9.0										
8.0m	9.0	9.0	9.0	8.4×9.0	8.9×9.0								
9.0m	9.0	9.0	9.0	9.0	9.0	9.7×9.0	9.9×9.0						
10.0m	9.0	9.0	9.0	9.0	9.0	9.0	9.0	10.4×9.0	11.0×9.0	11.7×9.0			
12.0m	9.0	9.0	9.0	9.0	9.0	9.0	9.0	9.0	9.0	9.0	12.2×9.0	12.7×9.0	13.0×9.0
14.0m	9.0	9.0	9.0	9.0	9.0	9.0	9.0	9.0	9.0	9.0	9.0	9.0	9.0
16.0m	9.0	9.0	9.0	9.0	9.0	9.0	9.0	9.0	9.0	9.0	9.0	9.0	9.0
18.0m	9.0	9.0	9.0	9.0	9.0	9.0	9.0	9.0	9.0	9.0	9.0	9.0	9.0
20.0m	9.0	9.0	9.0	9.0	9.0	9.0	9.0	9.0	9.0	9.0	9.0	9.0	9.0
22.0m	9.0	9.0	9.0	9.0	9.0	9.0	9.0	9.0	9.0	9.0	9.0	9.0	9.0
24.0m	9.0	9.0	9.0	9.0	9.0	9.0	9.0	9.0	9.0	9.0	9.0	9.0	9.0
26.0m	24.6×9.0	9.0	9.0	9.0	9.0	9.0	9.0	25.8×9.0	25.6×9.0	25.3×9.0	25.1×9.0	25.1×9.0	24.8×9.0
28.0m		27.2×8.7	26.8×9.0	26.7×9.0	26.3×9.0	26.2×9.0	8.0	7.9	7.7	7.6	7.5	7.5	7.4
30.0m			29.8×7.7	7.6	7.3	7.2	7.2	7.0	6.9	6.8	6.6	6.6	6.5
32.0m				6.7	6.6	6.5	6.4	6.3	6.2	6.1	5.9	5.9	5.8
34.0m				32.4×6.6	6.0	5.9	5.8	5.7	5.5	5.5	5.3	5.3	5.2
36.0m					35.0×5.7	5.4	5.3	5.2	5.0	4.9	4.7	4.7	4.6
38.0m						37.6×5.0	4.8	4.7	4.5	4.4	4.2	4.2	4.1
40.0m							4.3	4.2	4.1	4.0	3.8	3.8	3.6
42.0m							40.2×4.2	3.8	3.7	3.6	3.4	3.3	3.2
44.0m								42.8×3.7	3.4	3.2	3.0	2.9	2.8
46.0m									45.6×3.2	2.9	2.6	2.5	2.4
48.0m										2.4	2.3	2.2	2.1
50.0m											2.0	1.9	1.8
52.0m											50.6×1.8	1.6	1.5

* Preliminary lifting table, may deviate after calculations / adjustments

WORKING RADIUS | FIXED JIB



LOAD CHART | FIXED JIB



39m - 63m



360°

15° 30°
13m - 31m

54t

Main boom length	39.0m								42.0m							
Fly jib length	13.0m		19.0m		25.0m		31.0m		13.0m		19.0m		25.0m		31.0m	
Fly jib angle	15°	30°	15°	30°	15°	30°	15°	30°	15°	30°	15°	30°	15°	30°	15°	30°
14.0m	14.6								14.4							
16.0m	14.3															
18.0m	14.1	11.5	9.0						14.2	11.6	9.1					
20.0m	13.9	10.9	8.9		5.5				14.0	11.1	8.9		5.6			
22.0m	13.7	10.5	8.7	7.5	5.4		3.2		13.8	10.6	8.8	7.6	5.5		3.2	
24.0m	13.6	10.0	8.6	7.2	5.4		3.1		13.7	10.2	8.7	7.3	5.4		3.2	
26.0m	13.4	9.7	8.5	6.9	5.3	5.0	3.1		13.5	9.8	8.6	7.0	5.3	5.0	3.1	
28.0m	13.3	9.3	8.4	6.6	5.2	4.9	3.0		13.4	9.5	8.5	6.7	5.2	4.9	3.0	
30.0m	12.9	9.0	8.3	6.4	5.1	4.9	3.0	2.7	13.2	9.2	8.4	6.5	5.2	4.9	3.0	2.7
32.0m	12.3	8.7	8.2	6.2	5.1	4.8	2.9	2.6	12.3	8.9	8.3	6.3	5.1	4.8	3.0	2.6
34.0m	11.4	8.5	8.1	5.9	5.0	4.6	2.9	2.5	11.3	8.7	8.2	6.1	5.0	4.7	2.9	2.5
36.0m	10.5	8.2	8.0	5.8	5.0	4.4	2.8	2.4	10.4	8.4	8.1	5.9	5.0	4.5	2.9	2.4
38.0m	9.7	8.0	7.8	5.6	4.9	4.3	2.8	2.3	9.6	8.2	8.0	5.7	4.9	4.4	2.8	2.3
40.0m	9.0	7.9	7.5	5.4	4.8	4.1	2.7	2.2	8.8	8.0	7.8	5.5	4.9	4.2	2.8	2.2
42.0m	8.3	7.7	7.2	5.3	4.8	4.0	2.6	2.1	8.2	7.9	7.5	5.4	4.8	4.1	2.7	2.2
44.0m	7.7	7.6	7.0	5.2	4.7	3.9	2.5	2.0	7.6	7.7	7.2	5.3	4.8	4.0	2.5	2.1
46.0m	7.2	7.3	6.7	5.1	4.5	3.8	2.3	2.0	7.1	7.2	7.0	5.2	4.7	3.9	2.4	2.0
48.0m	6.7	6.7	6.5	5.0	4.4	3.7	2.2	1.9	6.6	6.7	6.7	5.1	4.5	3.8	2.3	1.9
50.0m			6.3	4.9	4.3	3.6	2.2	1.8	6.1	6.2	6.4	5.0	4.4	3.7	2.2	1.9
52.0m			6.1	4.8	4.2	3.5	2.1	1.8			6.0	4.9	4.3	3.6	2.1	1.8
54.0m				4.8	4.1	3.5	2.0	1.7			5.6	4.8	4.2	3.5	2.1	1.8
56.0m					4.0	3.4	1.9	1.7			5.3	4.8	4.1	3.5	2.0	1.7
58.0m					3.9	3.4	1.8	1.6					4.0	3.4	1.9	1.7
60.0m						3.3	1.8	1.6					4.0	3.4	1.8	1.6
62.0m							1.7	1.6					3.9	3.3	1.8	1.6
64.0m							1.7	1.6							1.7	1.6
66.0m								1.6							1.7	1.6
70.0m																

* Preliminary lifting table, may deviate after calculations / adjustments

LOAD CHART | FIXED JIB



39m - 63m



360°

15° 30°
13m - 31m

54t

Main boom length	45.0m								48.0m							
Fly jib length	13.0m		19.0m		25.0m		31.0m		13.0m		19.0m		25.0m		31.0m	
Fly jib angle	15°	30°	15°	30°	15°	30°	15°	30°	15°	30°	15°	30°	15°	30°	15°	30°
14.0m																
16.0m	14.5								14.5							
18.0m	14.3	11.8	9.1						14.3		9.1					
20.0m	14.1	11.3	9.0		5.6				14.2	11.4	9.0					
22.0m	13.9	10.8	8.8	7.7	5.5				14.0	11.0	8.9		5.5			
24.0m	13.7	10.4	8.7	7.4	5.4		3.2		13.8	10.6	8.8	7.5	5.4		3.2	
26.0m	13.6	10.0	8.6	7.1	5.3	5.0	3.1		13.7	10.2	8.7	7.2	5.4	5.0	3.1	
28.0m	13.5	9.7	8.5	6.9	5.3	4.9	3.1		13.5	9.9	8.6	7.0	5.3	5.0	3.1	
30.0m	13.2	9.4	8.4	6.6	5.2	4.9	3.0	2.8	12.9	9.5	8.5	6.7	5.2	4.9	3.0	2.8
32.0m	12.1	9.1	8.3	6.4	5.1	4.9	3.0	2.7	11.9	9.3	8.4	6.5	5.2	4.9	3.0	2.7
34.0m	11.1	8.8	8.2	6.2	5.1	4.8	2.9	2.6	10.9	9.0	8.3	6.3	5.1	4.8	3.0	2.6
36.0m	10.2	8.6	8.2	6.0	5.0	4.6	2.9	2.5	10.0	8.8	8.2	6.1	5.1	4.7	2.9	2.5
38.0m	9.3	8.4	8.1	5.8	5.0	4.4	2.9	2.4	9.1	8.5	8.1	5.9	5.0	4.5	2.9	2.4
40.0m	8.6	8.2	8.0	5.7	4.9	4.3	2.8	2.3	8.4	8.3	8.1	5.8	5.0	4.4	2.8	2.3
42.0m	8.0	8.0	7.7	5.5	4.9	4.2	2.7	2.2	7.8	8.0	8.0	5.6	4.9	4.3	2.8	2.2
44.0m	7.4	7.6	7.4	5.4	4.8	4.1	2.6	2.1	7.2	7.4	7.5	5.5	4.9	4.1	2.7	2.2
46.0m	6.8	7.0	7.2	5.3	4.8	4.0	2.5	2.1	6.6	6.9	7.0	5.4	4.8	4.0	2.6	2.1
48.0m	6.3	6.5	6.7	5.2	4.6	3.9	2.4	2.0	6.1	6.3	6.5	5.3	4.8	3.9	2.5	2.0
50.0m	5.9	6.0	6.2	5.1	4.5	3.8	2.3	1.9	5.7	5.8	6.0	5.1	4.6	3.8	2.4	2.0
52.0m	5.5	5.6	5.8	5.0	4.4	3.7	2.2	1.9	5.3	5.4	5.6	5.1	4.5	3.7	2.3	1.9
54.0m			5.4	4.9	4.3	3.6	2.1	1.8	4.9	5.0	5.2	5.0	4.4	3.7	2.2	1.9
56.0m			5.0	4.8	4.2	3.5	2.1	1.8		4.6	4.8	4.9	4.3	3.6	2.1	1.8
58.0m			4.7	4.8	4.1	3.5	2.0	1.7			4.5	4.7	4.2	3.5	2.1	1.8
60.0m					4.0	3.4	1.9	1.7			4.2	4.3	4.1	3.5	2.0	1.7
62.0m					4.0	3.4	1.8	1.6			4.0		4.1	3.4	1.9	1.7
64.0m					3.9	3.3	1.8	1.6					3.9	3.4	1.8	1.6
66.0m							1.7	1.6					3.6	3.3	1.8	1.6
70.0m							1.6	1.6							1.7	1.6
74.0m																1.6
78.0m																

* Preliminary lifting table, may deviate after calculations / adjustments

LOAD CHART | FIXED JIB



39m - 63m



360°



15° 30°

13m - 31m



54t

Main boom length	51.0m								54.0m							
Fly jib length	13.0m		19.0m		25.0m		31.0m		13.0m		19.0m		25.0m		31.0m	
Fly jib angle	15°	30°	15°	30°	15°	30°	15°	30°	15°	30°	15°	30°	15°	30°	15°	30°
14.0m																
16.0m	14.6															
18.0m	14.4								14.5							
20.0m	14.2	11.6	9.0						14.3	11.7	9.1					
22.0m	14.1	11.1	8.9		5.5				14.1	11.3	9.0		5.6			
24.0m	13.9	10.7	8.8	7.6	5.5		3.2		14.0	10.9	8.9	7.7	5.5		3.2	
26.0m	13.8	10.4	8.7	7.3	5.4		3.1		13.8	10.5	8.8	7.4	5.4		3.2	
28.0m	13.6	10.0	8.6	7.1	5.3	5.0	3.1		13.7	10.2	8.7	7.1	5.4	5.0	3.1	
30.0m	12.8	9.7	8.5	6.8	5.3	4.9	3.1		12.6	9.9	8.6	6.9	5.3	4.9	3.1	
32.0m	11.7	9.4	8.4	6.6	5.2	4.9	3.0	2.7	11.5	9.6	8.5	6.7	5.2	4.9	3.0	2.8
34.0m	10.7	9.2	8.3	6.4	5.1	4.8	3.0	2.6	10.5	9.3	8.4	6.5	5.2	4.9	3.0	2.7
36.0m	9.8	8.9	8.3	6.2	5.1	4.7	2.9	2.5	9.6	9.1	8.3	6.3	5.1	4.8	2.9	2.6
38.0m	9.0	8.7	8.2	6.0	5.0	4.6	2.9	2.4	8.8	8.9	8.2	6.1	5.1	4.7	2.9	2.5
40.0m	8.3	8.5	8.1	5.9	5.0	4.5	2.9	2.4	8.1	8.3	8.2	6.0	5.0	4.5	2.9	2.4
42.0m	7.6	7.9	7.9	5.7	4.9	4.3	2.8	2.3	7.4	7.7	7.7	5.8	5.0	4.4	2.8	2.3
44.0m	7.0	7.3	7.4	5.6	4.9	4.2	2.8	2.2	6.8	7.2	7.2	5.7	4.9	4.3	2.8	2.2
46.0m	6.5	6.8	6.8	5.5	4.9	4.1	2.7	2.1	6.3	6.6	6.6	5.6	4.9	4.2	2.7	2.2
48.0m	6.0	6.2	6.3	5.3	4.8	4.0	2.6	2.1	5.8	6.1	6.1	5.4	4.8	4.1	2.6	2.1
50.0m	5.6	5.8	5.9	5.2	4.7	3.9	2.5	2.0	5.4	5.6	5.7	5.3	4.8	4.0	2.5	2.0
52.0m	5.1	5.3	5.5	5.1	4.6	3.8	2.4	2.0	4.9	5.1	5.3	5.2	4.7	3.9	2.4	2.0
54.0m	4.8	4.9	5.1	5.1	4.5	3.7	2.3	1.9	4.6	4.7	4.9	5.1	4.6	3.8	2.4	1.9
56.0m	4.4	4.5	4.7	5.0	4.4	3.7	2.2	1.8	4.2	4.3	4.5	4.8	4.5	3.7	2.3	1.9
58.0m	4.1	4.1	4.4	4.6	4.3	3.6	2.1	1.8	3.9	4.0	4.2	4.4	4.4	3.7	2.2	1.8
60.0m			4.1	4.2	4.2	3.5	2.1	1.8	3.5	3.6	3.9	4.1	4.1	3.6	2.1	1.8
62.0m			3.8	3.9	4.0	3.5	2.0	1.7			3.6	3.7	3.8	3.5	2.0	1.7
64.0m			3.5	3.6	3.8	3.4	1.9	1.7			3.3	3.4	3.6	3.5	2.0	1.7
66.0m					3.5	3.4	1.9	1.6			3.0	3.1	3.3	3.4	1.9	1.7
70.0m					3.0	3.1	1.7	1.6					2.8	3.0	1.8	1.6
74.0m							1.7	1.6							1.7	1.6
78.0m															1.6	1.6

* Preliminary lifting table, may deviate after calculations / adjustments

LOAD CHART | FIXED JIB



39m - 63m



360°



13m - 31m



54t

Main boom length	57.0m								60.0m							
Fly jib length	13.0m		19.0m		25.0m		31.0m		13.0m		19.0m		25.0m		31.0m	
Fly jib angle	15°	30°	15°	30°	15°	30°	15°	30°	15°	30°	15°	30°	15°	30°	15°	30°
14.0m																
16.0m																
18.0m	14.5								14.6							
20.0m	14.3	11.8	9.1						14.4	9.1						
22.0m	14.2	11.4	9.0		5.6				14.2	11.5	9.0					
24.0m	14.0	11.0	8.9	7.8	5.5				14.1	11.1	8.9		5.5			
26.0m	13.9	10.6	8.8	7.5	5.4		3.2		13.9	10.8	8.8	7.6	5.5		3.2	
28.0m	13.6	10.3	8.7	7.2	5.4	5.0	3.1		13.4	10.5	8.7	7.3	5.4	5.0	3.1	
30.0m	12.4	10.0	8.6	7.0	5.3	5.0	3.1		12.2	10.2	8.6	7.1	5.3	5.0	3.1	
32.0m	11.3	9.7	8.5	6.8	5.3	4.9	3.0	2.8	11.1	9.9	8.6	6.9	5.3	4.9	3.1	2.8
34.0m	10.3	9.5	8.4	6.6	5.2	4.9	3.0	2.7	10.2	9.6	8.5	6.7	5.2	4.9	3.0	2.7
36.0m	9.4	9.2	8.4	6.4	5.1	4.8	3.0	2.6	9.3	9.4	8.4	6.5	5.2	4.9	3.0	2.6
38.0m	8.6	8.8	8.3	6.2	5.1	4.7	2.9	2.5	8.5	8.7	8.3	6.3	5.1	4.8	2.9	2.5
40.0m	7.9	8.1	8.2	6.1	5.0	4.6	2.9	2.4	7.7	8.0	8.1	6.2	5.1	4.7	2.9	2.5
42.0m	7.2	7.5	7.5	5.9	5.0	4.5	2.9	2.4	7.1	7.4	7.4	6.0	5.0	4.5	2.9	2.4
44.0m	6.6	7.0	7.0	5.8	5.0	4.4	2.8	2.3	6.5	6.9	6.8	5.9	5.0	4.4	2.8	2.3
46.0m	6.1	6.4	6.4	5.7	4.9	4.2	2.8	2.2	6.0	6.3	6.3	5.7	4.9	4.3	2.8	2.3
48.0m	5.6	5.9	5.9	5.5	4.9	4.1	2.7	2.1	5.5	5.8	5.8	5.6	4.9	4.2	2.8	2.2
50.0m	5.1	5.4	5.5	5.4	4.8	4.0	2.6	2.1	5.0	5.3	5.3	5.5	4.9	4.1	2.7	2.1
52.0m	4.7	4.9	5.0	5.3	4.8	4.0	2.5	2.0	4.6	4.8	4.9	5.3	4.8	4.0	2.6	2.1
54.0m	4.3	4.5	4.7	5.0	4.7	3.9	2.4	2.0	4.2	4.4	4.5	4.9	4.8	3.9	2.5	2.0
56.0m	4.0	4.1	4.3	4.6	4.6	3.8	2.3	1.9	3.9	4.0	4.2	4.5	4.4	3.9	2.4	2.0
58.0m	3.7	3.8	4.0	4.3	4.2	3.7	2.3	1.9	3.5	3.7	3.8	4.2	4.1	3.8	2.3	1.9
60.0m	3.3	3.4	3.7	3.9	3.9	3.6	2.2	1.8	3.2	3.3	3.5	3.8	3.8	3.7	2.2	1.9
62.0m	3.0	3.1	3.4	3.6	3.6	3.6	2.1	1.8	2.9	3.0	3.2	3.5	3.5	3.6	2.2	1.8
64.0m		2.8	3.1	3.3	3.3	3.5	2.0	1.7	2.6	2.7	2.9	3.2	3.2	3.6	2.1	1.8
66.0m			2.8	3.0	3.1	3.4	2.0	1.7	2.4	2.4	2.7	2.9	3.0	3.3	2.0	1.7
70.0m				2.4	2.6	2.8	1.9	1.6			2.2	2.3	2.5	2.7	1.9	1.7
74.0m					2.2	2.3	1.8	1.6					2.1	2.2	1.8	1.6
78.0m							1.7	1.6						1.8	1.7	1.6
82.0m								1.6							1.6	1.6
86.0m																

* Preliminary lifting table, may deviate after calculations / adjustments

LOAD CHART | FIXED JIB



39m - 63m



360°



15° 30°
13m - 31m

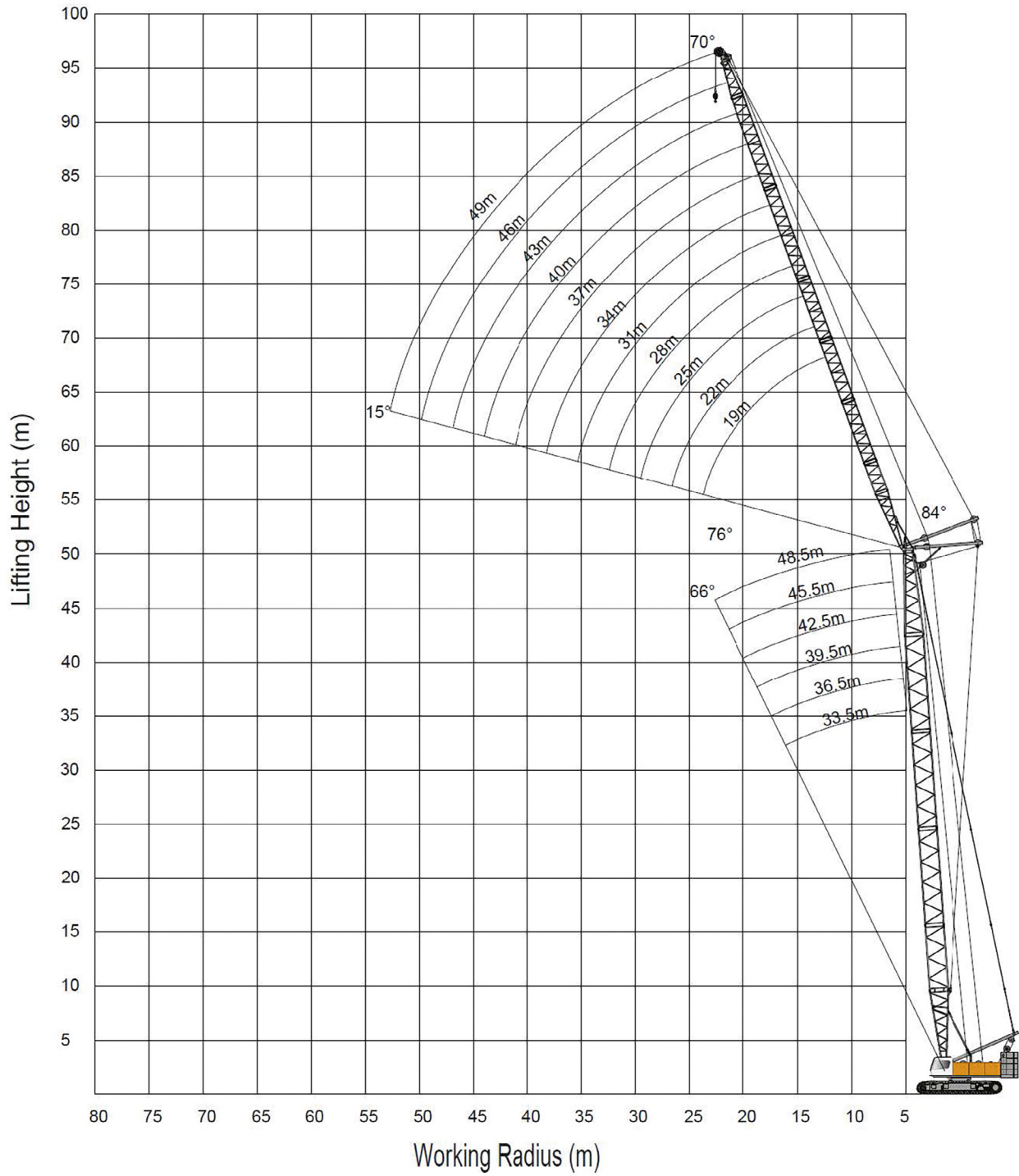


54t

Main boom length	63.0m											
Fly jib length	13.0m		19.0m		25.0m		31.0m					
Fly jib angle	15°	30°	15°	30°	15°	30°	15°	30°				
14.0m												
16.0m												
18.0m	14.6											
20.0m	14.4											
22.0m	14.3	11.6	9.1									
24.0m	14.1	11.2	9.0		5.5							
26.0m	14.0	10.9	8.9	7.6	5.5		3.2					
28.0m	13.2	10.6	8.8	7.4	5.4		3.2					
30.0m	12.0	10.3	8.7	7.2	5.4	5.0	3.1					
32.0m	10.9	10.0	8.6	7.0	5.3	4.9	3.1					
34.0m	10.0	9.8	8.5	6.8	5.3	4.9	3.0	2.7				
36.0m	9.1	9.3	8.4	6.6	5.2	4.9	3.0	2.7				
38.0m	8.3	8.5	8.4	6.4	5.2	4.8	3.0	2.6				
40.0m	7.5	7.8	7.9	6.3	5.1	4.7	2.9	2.5				
42.0m	6.9	7.2	7.2	6.1	5.1	4.6	2.9	2.4				
44.0m	6.3	6.7	6.6	6.0	5.0	4.5	2.9	2.4				
46.0m	5.7	6.1	6.1	5.8	5.0	4.4	2.8	2.3				
48.0m	5.3	5.6	5.6	5.7	4.9	4.3	2.8	2.2				
50.0m	4.8	5.1	5.1	5.6	4.9	4.2	2.7	2.2				
52.0m	4.4	4.7	4.7	5.2	4.9	4.1	2.6	2.1				
54.0m	4.0	4.2	4.3	4.7	4.6	4.0	2.6	2.0				
56.0m	3.6	3.9	4.0	4.4	4.2	3.9	2.5	2.0				
58.0m	3.3	3.5	3.6	4.0	3.9	3.8	2.4	1.9				
60.0m	3.0	3.2	3.3	3.6	3.6	3.8	2.3	1.9				
62.0m	2.7	2.8	3.0	3.3	3.3	3.7	2.2	1.9				
64.0m	2.4	2.5	2.7	3.0	3.0	3.4	2.2	1.8				
66.0m	2.2	2.3	2.5	2.7	2.8	3.1	2.1	1.8				
70.0m			2.0	2.2	2.3	2.6	2.0	1.7				
74.0m			1.6	1.7	1.9	2.1	1.9	1.6				
78.0m					1.5	1.6	1.7	1.6				
82.0m							1.4	1.6				
86.0m							1.0	1.2				

* Preliminary lifting table, may deviate after calculations / adjustments

WORKING RADIUS | LUFFING JIB



LOAD CHART | LUFFING JIB



33,5m - 48,5m



360°



19m - 49m



54t

Mainboom Lenght	33,5m																	
Luffing JIB lenght	19,0m			22,0m			25,0m			28,0m			31,0m			34,0m		
Luffing JIB angle	84.0	76.0	66.0	84.0	76.0	66.0	84.0	76.0	66.0	84.0	76.0	66.0	84.0	76.0	66.0	84.0	76.0	66.0
10.0m																		
12.0m																		
14.0m	30,6			30,6														
16.0m	27,4			27,0			26,6											
18.0m	24,0			23,7			23,4			20,7			20,7					
20.0m	21,4	19,9		21,2			28,9			20,5			20,3			20,0		
22.0m	19,3	17,9		19,0	17,6		18,8			18,5			18,3			18,0		
24.0m		16,3		17,3	16,1		17,0	15,8		16,8			16,6			16,3		
26.0m		14,9		15,8	14,7		15,6	14,5		15,4	14,2		15,1	14,0		14,9		
28.0m		13,7	12,4		13,5		14,4	13,3		14,1	13,1		14,0	12,9		13,8	12,7	
30.0m			11,4		12,4	11,3		12,2		13,1	12,1		12,9	11,9		12,7	11,7	
32.0m			10,5			10,4		11,3	10,2	12,1	12,1		12,0	11,0		11,8	10,8	
34.0m						9,6		10,5	9,5		11,2		11,1	10,2		10,9	10,0	
36.0m						9,0			8,8		10,4	9,2		9,5	8,4	10,2	9,3	
38.0m								8,2				8,6		8,8	7,8	9,4	8,6	7,7
40.0m												8,0		8,3	7,3		8,1	7,1
42.0m												7,5			6,8		7,6	6,7
44.0m												7,0			6,5		0,0	6,3
46.0m																		5,9
48.0m																		5,6

* Preliminary lifting table, may deviate after calculations / adjustments

LOAD CHART | LUFFING JIB



33,5m - 48,5m



360°



19m - 49m



54t

Mainboom Lenght	33,5m														
Luffing JIB lenght	37.0m			40.0m			43.0m			46.0m			49.0m		
Luffing JIB angle	84.0	76.0	66.0	84.0	76.0	66.0	84.0	76.0	66.0	84.0	76.0	66.0	84.0	76.0	66.0
10.0m															
12.0m															
14.0m															
16.0m															
18.0m															
20.0m	18,2														
22.0m	17,7			15,4			12,7								
24.0m	16,1			15,4			12,9			10,7					
26.0m	14,7			14,5			12,9			10,8			8,9		
28.0m	13,5			13,3			12,7			10,8			9,0		
30.0m	12,5	11,4		12,3			12,1			10,6			8,9		
32.0m	11,6	10,6		11,2	10,4		11,2	10,2		10,1			8,7		
34.0m	10,7	9,8		9,3	9,6		9,1	9,5		9,2	9,3		8,3		
36.0m	10,0	9,1		9,1	8,9		7,4	8,7		7,3	8,6		7,5	8,4	
38.0m	9,3	8,5		8,6	8,3		7,1	8,1		5,8	7,9		5,9	7,7	
40.0m	8,6	7,9	6,9	8,1	7,7		6,7	7,6		5,5	7,4		4,4	7,2	
42.0m		7,4	6,5	7,7	7,2	6,3	6,2	7,0		5,1	6,8		4,1	6,7	
44.0m		6,9	6,0	7,2	6,8	5,9	5,9	6,6	5,7	4,8	6,5		3,8	6,2	
46.0m			5,7		6,4	5,5	5,5	6,2	5,3	4,4	5,2	5,1	3,5	5,9	
48.0m			5,3		6,0	5,2		5,8	5,0	4,1	4,9	4,8	3,2	4,5	4,6
50.0m			5,0			4,9		5,5	4,7		4,5	4,5	3,0	3,6	4,3
52.0m						4,6			4,4		4,2	4,2	2,7	3,2	4,1
54.0m						4,3			4,1		4,0	4,0		3,1	3,8
56.0m									3,9			3,7		2,8	3,5
58.0m												3,5			3,3
60.0m												3,2			3,0
62.0m															2,8
64.0m															

* Preliminary lifting table, may deviate after calculations / adjustments

LOAD CHART | LUFFING JIB



33,5m - 48,5m



360°



19m - 49m



54t

Mainboom Lenght	36,5m																	
Luffing JIB lenght	19,0m			22,0m			25,0m			28,0m			31,0m			34,0m		
Luffing JIB angle	84.0	76.0	66.0	84.0	76.0	66.0	84.0	76.0	66.0	84.0	76.0	66.0	84.0	76.0	66.0	84.0	76.0	66.0
10.0m																		
12.0m																		
14.0m	31,2																	
16.0m	27,0			26,6			20,7											
18.0m	23,8			23,5			20,7			20,7			20,7					
20.0m	21,2			20,9			20,6			20,3			20,0			19,8		
22.0m	19,1	17,6		20,7			20,3			20,1			18,0			17,8		
24.0m	17,5	16,0		17,2	15,8		16,8	15,5		16,7			16,4			16,1		
26.0m		14,7		15,7	14,7		15,5	14,2		15,2	14,0		15,0			14,9		
28.0m		13,5			13,3		14,2	13,1		14,0	12,8		13,8	12,6		13,7		
30.0m			11,1		12,2		13,1	12,1		13,0	11,9		12,8	11,6		12,6	11,4	
32.0m			10,3		11,3	10,1		11,2		12,0	11,0		11,9	10,8		11,7	10,6	
34.0m			10,4			10,3		10,4	10,1		10,2		11,0	10,7		11,3	10,7	
36.0m						8,7			8,6		10,4	8,4		10,2		10,1	10,0	
38.0m						8,5			7,9			7,7		8,6	7,6	10,4	8,5	
40.0m									7,5			7,6		8,1	7,0		7,9	6,8
42.0m												6,8			6,7		7,5	6,5
44.0m															6,3			6,0
46.0m															5,9			5,7
48.0m																		5,3

* Preliminary lifting table, may deviate after calculations / adjustments

LOAD CHART | LUFFING JIB



33,5m - 48,5m



360°



19m - 49m



54t

Mainboom Lenght	36,5m														
Luffing JIB lenght	37.0m			40.0m			43.0m			46.0m			49.0m		
Luffing JIB angle	84.0	76.0	66.0	84.0	76.0	66.0	84.0	76.0	66.0	84.0	76.0	66.0	84.0	76.0	66.0
10.0m															
12.0m															
14.0m															
16.0m															
18.0m															
20.0m	20,0														
22.0m	17,6			15,6											
24.0m	15,9			16,2			12,9			10,7					
26.0m	14,5			14,4			12,9			11,7			8,9		
28.0m	13,3			13,1			12,8			11,0			9,0		
30.0m	12,3	11,3		12,2			12,0			10,6			8,9		
32.0m	11,4	10,4		11,3	10,2		11,1			10,2			8,8		
34.0m	10,6	9,6		10,3	9,5		9,5	9,2		9,4			8,4		
36.0m	10,4	9,0		10,1	8,7		7,4	8,6		7,7	8,4		7,7	8,8	
38.0m	10,2	8,3		8,7	8,4		7,2	8,0		5,8	7,7		6,1	7,6	
40.0m	8,6	7,7		8,5	7,6		6,8	7,5		5,6	7,4		4,4	7,0	
42.0m		7,7	6,2	7,7	7,1		6,4	6,9		5,1	6,8		4,1	6,6	
44.0m		6,8	5,9	8,1	6,7	5,7	5,9	6,5		4,8	6,3		3,8	6,1	
46.0m		7,2	6,0		6,2	5,3	5,6	6,0	5,0	4,5	5,9		3,6	5,7	
48.0m			5,2		5,9	5,0		5,8	4,8	4,1	5,0	5,3	3,2	5,3	
50.0m			4,9			4,7		5,3	4,5	3,9	4,7	4,3	3,1	4,3	4,1
52.0m			5,0			4,4		5,0	4,1		4,3	4,1	3,2	3,4	3,8
54.0m						4,1			4,0		4,1	3,8		3,2	3,6
56.0m									3,7			3,5		2,9	3,3
58.0m									3,5			3,3		2,7	3,2
60.0m												3,2			2,9
62.0m															3,0
64.0m															

* Preliminary lifting table, may deviate after calculations / adjustments

LOAD CHART | LUFFING JIB



33,5m - 48,5m



360°



19m - 49m



54t

Mainboom Lenght	39,5m																	
Luffing JIB lenght	19,0m			22,0m			25,0m			28,0m			31,0m			34,0m		
Luffing JIB angle	84.0	76.0	66.0	84.0	76.0	66.0	84.0	76.0	66.0	84.0	76.0	66.0	84.0	76.0	66.0	84.0	76.0	66.0
10.0m																		
12.0m																		
14.0m	30,8																	
16.0m	26,6			20,7														
18.0m	23,7			20,7			20,7			20,1			20,7					
20.0m	20,9			20,6			20,3			20,1			19,8			19,5		
22.0m	18,8			20,4			18,4			18,5			17,8			17,6		
24.0m	17,8	17,2		16,9	15,4		16,7			16,4			16,2			15,9		
26.0m		15,7		15,5	14,1		15,3	13,9		15,0	13,6		14,9			14,6		
28.0m		14,3			13,1		14,0	12,9		13,9	12,5		13,7	12,3		13,4		
30.0m		13,2			12,1		13,1	11,9		12,8	11,6		12,8	11,4		12,5	11,2	
32.0m					11,1			11,0		11,9	10,7		12,1	10,5		11,5	10,4	
34.0m			10,8			10,8		10,2			10,4		10,9	9,8		10,8	9,6	
36.0m			9,2			8,4					9,3		10,2	9,2		10,0	8,9	
38.0m			8,6			7,8			8,2		8,6	7,5		8,5	0,0	9,4	8,3	
40.0m									7,7			6,9		7,9	6,8		7,7	
42.0m									7,2			6,5			6,8		8,0	6,2
44.0m									6,8			6,2			5,9		6,8	5,8
46.0m															5,6			5,7
48.0m															5,3			5,1
50.0m																		5,3
52.0m																		

* Preliminary lifting table, may deviate after calculations / adjustments

LOAD CHART | LUFFING JIB



33,5m - 48,5m



360°



19m - 49m



54t

Mainboom Lenght	39,5m														
Luffing JIB lenght	37.0m			40.0m			43.0m			46.0m			49.0m		
Luffing JIB angle	84.0	76.0	66.0	84.0	76.0	66.0	84.0	76.0	66.0	84.0	76.0	66.0	84.0	76.0	66.0
10.0m															
12.0m															
14.0m															
16.0m															
18.0m															
20.0m															
22.0m	17,3			15,3											
24.0m	15,7			16,0			10,4			10,4					
26.0m	14,3			14,1			10,4			10,4			8,9		
28.0m	13,2			13,0			10,4			10,4			8,9		
30.0m	12,2			12,0			10,4			10,4			9,0		
32.0m	11,3	10,2		11,2	10,4		10,4			10,3			8,8		
34.0m	10,5	9,4		9,4	9,2		10,8	9,1		9,5			8,6		
36.0m	9,8	8,7		9,2	8,6		7,4	8,4		8,0	8,7		7,7		
38.0m	9,2	8,3		8,7	7,9		7,9	7,7		5,9	7,6		6,5	7,4	
40.0m	8,6	7,6		8,2	7,4		6,8	8,0		5,7	7,0		4,4	6,8	
42.0m		7,1	5,9	7,7	6,9		6,9	6,8		5,3	6,6		4,2	6,9	
44.0m		6,7	5,6	7,4	6,6	5,4	5,9	6,3		4,9	6,1		3,9	5,9	
46.0m		6,2	5,2		6,1	5,0	5,6	5,9	4,9	4,8	5,8		3,6	5,6	
48.0m			4,9		5,8	4,7		5,5	5,0	4,2	5,1	4,3	3,2	5,2	
50.0m			4,6		5,4	4,4		5,2	4,2	4,0	4,8	4,1	3,1	3,8	3,9
52.0m			4,3			4,1		4,9	4,0		4,4	3,8	3,5	3,5	3,6
54.0m						4,0			3,7		4,1	3,5		3,2	3,3
56.0m						4,4			3,5		3,9	3,3		3,0	3,2
58.0m									3,2			3,2		3,0	2,9
60.0m												2,9			2,8
62.0m												3,0			2,5
64.0m															

* Preliminary lifting table, may deviate after calculations / adjustments

LOAD CHART | LUFFING JIB



33,5m - 48,5m



360°



19m - 49m



54t

Mainboom Length	42,5m																	
Luffing JIB length	19,0m			22,0m			25,0m			28,0m			31,0m			34,0m		
Luffing JIB angle	84.0	76.0	66.0	84.0	76.0	66.0	84.0	76.0	66.0	84.0	76.0	66.0	84.0	76.0	66.0	84.0	76.0	66.0
10.0m																		
12.0m																		
14.0m	20,7																	
16.0m	20,7			20,7														
18.0m	20,7			20,7			20,7			20,7								
20.0m	20,3			20,3			20,1			19,8			19,5			19,3		
22.0m	18,5	16,8		18,1			18,1			17,8			17,6			17,4		
24.0m	16,9	15,5		16,7	15,0		16,1			16,2			15,9			15,8		
26.0m		14,0		15,5	13,8		14,9	14,1		14,5			14,6			14,8		
28.0m		13,0			12,7		14,0	12,5		13,5	12,2		13,2	12,1		13,2		
30.0m		12,0			12,6		12,9	11,6		12,8	11,3		12,2	11,1		12,0	10,9	
32.0m					11,7			10,7		12,5	10,5		11,5	10,4		11,2	10,1	
34.0m			8,8			8,6		10,4			9,7		11,0	9,5		10,5	9,4	
36.0m			8,3			8,1		9,3	7,8		9,5		10,1	8,9		10,1	8,7	
38.0m						7,6			7,4		8,5	7,1		8,3		9,3	8,4	
40.0m						7,0			6,8			6,7		7,7	6,5		7,6	
42.0m									6,5			6,2		7,8	6,0		7,1	5,9
44.0m												5,9			5,7		6,7	5,5
46.0m												5,5			5,3			5,1
48.0m															5,0			4,9
50.0m																		5,3
52.0m																		5,3

* Preliminary lifting table, may deviate after calculations / adjustments

LOAD CHART | LUFFING JIB



33,5m - 48,5m



360°



19m - 49m



54t

Mainboom Lenght	42,5m														
Luffing JIB lenght	37.0m			40.0m			43.0m			46.0m			49.0m		
Luffing JIB angle	84.0	76.0	66.0	84.0	76.0	66.0	84.0	76.0	66.0	84.0	76.0	66.0	84.0	76.0	66.0
10.0m															
12.0m															
14.0m															
16.0m															
18.0m															
20.0m															
22.0m	17,1			10,4											
24.0m	15,5			10,4			10,4			10,4					
26.0m	14,1			10,4			10,4			10,4			8,8		
28.0m	13,1			10,4			10,4			10,4			8,9		
30.0m	12,1			10,4			10,4			10,4			9,0		
32.0m	11,0	10,8		10,4			10,4			10,4			8,9		
34.0m	10,2	9,2		9,4	9,0		10,1	8,8		9,7			8,6		
36.0m	9,6	8,6		9,2	8,4		7,5	8,4		8,4	7,9		7,9		
38.0m	9,8	7,9		8,7	7,8		7,3	7,6		5,9	7,4		6,8	7,2	
40.0m	8,5	7,4		8,3	7,5		6,8	7,0		5,7	6,8		4,5	6,7	
42.0m	7,9	6,9		7,8	6,8		6,4	6,6		5,3	7,1		4,2	6,2	
44.0m		6,5	5,3	7,3	6,5		6,0	6,1		5,0	5,9		4,0	5,8	
46.0m		6,1	5,0		5,9	4,8	5,7	5,8		5,3	5,6		4,5	5,4	
48.0m		5,8	4,7		5,6	4,5	5,4	5,4	4,2	4,2	5,2		3,3	5,0	
50.0m			4,3		5,2	4,1		5,0	4,1	4,0	4,9	3,8	3,1	4,7	
52.0m			4,1			4,0		4,8	3,7		5,1	3,5	2,8	3,6	3,3
54.0m			3,9			4,5			3,5		4,2	3,3		3,3	3,1
56.0m						3,5			3,2		4,0	3,1		3,1	2,9
58.0m									3,1			2,9		2,8	2,7
60.0m									2,9			3,1			2,5
62.0m												2,5			2,3
64.0m															

* Preliminary lifting table, may deviate after calculations / adjustments

LOAD CHART | LUFFING JIB



33,5m - 48,5m



360°



19m - 49m



54t

Mainboom Length	45,5m																	
Luffing JIB length	19,0m			22,0m			25,0m			28,0m			31,0m			34,0m		
Luffing JIB angle	84.0	76.0	66.0	84.0	76.0	66.0	84.0	76.0	66.0	84.0	76.0	66.0	84.0	76.0	66.0	84.0	76.0	66.0
10.0m																		
12.0m																		
14.0m																		
16.0m	20,7			20,7														
18.0m	20,7			20,7			20,7			20,7			19,3			19,0		
20.0m	18,5			20,1			20,0			19,5								
22.0m	16,5			16,0			17,9			17,6			17,4			17,3		
24.0m	15,1	15,0		14,7			14,3			16,0			15,8			15,6		
26.0m		13,8		13,6	13,8		13,3	13,3		12,9			14,9			14,2		
28.0m		12,8		12,8	12,5		12,3	12,2		12,0	12,0		11,6			13,1		
30.0m		12,3			11,6		11,5	11,3		11,2	11,1		10,9	11,7		10,5		
32.0m					10,7			10,5		10,4	10,4		10,1	10,1		9,8	10,6	
34.0m			8,6		10,4			9,8			9,5		9,5	9,4		9,2	9,2	
36.0m			8,0		7,8			9,1			8,9		9,1	8,7		8,7	8,6	
38.0m			7,5		7,3			7,2			8,3			8,6		8,2	8,0	
40.0m					6,8			6,7			7,7	6,4		7,7			7,5	
42.0m								6,3			6,0			7,1	5,9		7,0	
44.0m								5,9			5,7				6,1		6,6	5,3
46.0m											5,3				5,1			5,0
48.0m															4,9			4,7
50.0m															5,0			5,3
52.0m																		5,3

* Preliminary lifting table, may deviate after calculations / adjustments

LOAD CHART | LUFFING JIB



33,5m - 48,5m



360°



19m - 49m



54t

Mainboom Length	45,5m														
Luffing JIB length	37.0m			40.0m			43.0m			46.0m			49.0m		
Luffing JIB angle	84.0	76.0	66.0	84.0	76.0	66.0	84.0	76.0	66.0	84.0	76.0	66.0	84.0	76.0	66.0
10.0m															
12.0m															
14.0m															
16.0m															
18.0m															
20.0m															
22.0m	10,4			10,4											
24.0m	10,4			10,4			10,4								
26.0m	10,4			10,4			10,4			10,4			8,8		
28.0m	10,4			10,4			10,4			10,4			8,9		
30.0m	10,4			10,4			10,4			10,4			9,0		
32.0m	9,5	9,6		10,4			10,4			10,4			8,9		
34.0m	8,9	9,1		8,7	8,8		10,1			9,7			8,6		
36.0m	8,4	8,4		8,1	8,8		7,8	7,9		8,6			8,0		
38.0m	7,9	7,7		7,7	7,6		7,3	7,5		6,2	7,4		6,9	7,0	
40.0m	7,5	7,7		7,7	7,1		6,9	6,8		5,8	6,7		4,9	6,5	
42.0m	7,1	6,8		6,8	6,6		6,5	6,4		5,3	6,2		4,3	6,1	
44.0m		6,8		6,6	6,2		6,1	6,0		5,0	5,9		4,0	5,6	
46.0m		5,9	4,8		5,9		5,8	5,6		4,6	5,9		4,1	5,2	
48.0m		5,6	4,4		5,9	4,2	5,6	5,2		4,3	5,1		3,3	4,9	
50.0m			4,1		5,1	4,0		5,0	3,8	4,1	4,9		3,1	5,4	
52.0m			4,0			3,8		4,7	3,5		4,5	3,3	2,9	3,8	
54.0m			4,5			3,6		4,3	3,3		4,2	3,2	2,6	3,4	2,9
56.0m			3,4			3,3			3,1		4,0	2,9		3,2	3,6
58.0m						3,1			2,9			3,0		2,9	2,5
60.0m									2,9			2,5		2,7	2,3
62.0m									2,5			2,3			2,2
64.0m															

* Preliminary lifting table, may deviate after calculations / adjustments

LOAD CHART | LUFFING JIB



33,5m - 48,5m



360°



19m - 49m



54t

Mainboom Length	48,5m																	
Luffing JIB length	19,0m			22,0m			25,0m			28,0m			31,0m			34,0m		
Luffing JIB angle	84.0	76.0	66.0	84.0	76.0	66.0	84.0	76.0	66.0	84.0	76.0	66.0	84.0	76.0	66.0	84.0	76.0	66.0
10.0m																		
12.0m																		
14.0m																		
16.0m																		
18.0m	20,7			20,7			20,7			20,7								
20.0m	16,0			18,2			18,9			19,0			19,0					
22.0m	14,6			14,3			16,3			16,9			17,1			10,4		
24.0m	13,3	15,0		13,1			12,9			14,7			15,4			10,4		
26.0m		13,4		12,0	13,1		11,7			11,6			13,3			10,4		
28.0m		12,3		11,2	12,2		10,8	11,9		10,5	11,6		10,5			10,4		
30.0m		11,4			11,3		10,1	11,0		9,7	10,8		9,5	10,5		9,6		
32.0m		10,6			10,4			10,3		9,1	10,0		8,8	9,8		8,6	9,6	
34.0m					9,7			9,5		8,6	9,3		8,3	9,1		8,0	8,9	
36.0m			7,6					8,8			8,6		7,8	8,5		7,6	8,3	
38.0m			7,1			6,9			6,7		8,1			7,9		7,1	8,0	
40.0m			6,7			6,5			6,3		7,6	6,0		7,4			7,2	
42.0m						6,0			5,9			5,7		6,9	5,5		6,8	
44.0m									5,5			5,3			5,1		6,3	5,0
46.0m												5,0					5,9	4,6
48.0m												4,7						4,3
50.0m															4,2			5,3
52.0m																		5,3
54.0m																		4,0
56.0m																		

* Preliminary lifting table, may deviate after calculations / adjustments

LOAD CHART | LUFFING JIB



33,5m - 48,5m



360°



19m - 49m



54t

Mainboom Lenght	48,5m														
Luffing JIB lenght	37.0m			40.0m			43.0m			46.0m			49.0m		
Luffing JIB angle	84.0	76.0	66.0	84.0	76.0	66.0	84.0	76.0	66.0	84.0	76.0	66.0	84.0	76.0	66.0
10.0m															
12.0m															
14.0m															
16.0m															
18.0m															
20.0m															
22.0m	10,4														
24.0m	10,4			10,4			10,4								
26.0m	10,4			10,4			10,4			10,4			8,8		
28.0m	10,4			10,4			10,4			10,4			8,9		
30.0m	10,4			10,4			10,4			10,4			9,0		
32.0m	8,7			10,1			10,4			10,4			8,9		
34.0m	7,7	8,7		8,0	8,6		9,2			9,6			8,6		
36.0m	7,2	8,1		7,0	7,9		7,3	7,7		8,4			8,2		
38.0m	6,8	7,6		6,6	7,4		6,3	7,1		6,6	6,9		7,2		
40.0m	6,5	7,0		6,2	6,8		5,9	6,7		5,7	6,5		5,3	6,2	
42.0m	6,1	6,6		5,9	6,4		5,6	6,2		5,3	6,0		4,4	5,9	
44.0m		6,1		5,6	5,9		5,3	5,8		5,0	5,6		4,1	5,4	
46.0m		5,8	4,4		5,6		5,0	5,4		4,7	5,2		3,7	5,0	
48.0m		5,4	4,1		5,2	4,0	4,8	5,0		4,3	4,9		3,4	4,7	
50.0m			3,9		5,0	3,7		4,8	3,4	4,1	4,6		3,2	4,4	
52.0m			3,6		4,7	3,4		4,5	3,2		4,3	3,1	2,9	3,8	
54.0m			3,4			3,2		4,2	3,0		4,1	2,8	2,7	3,5	2,6
56.0m			3,2			3,1			2,8		3,8	2,6		3,2	2,4
58.0m						2,8			2,6		3,6	2,4		3,0	2,3
60.0m						2,6			2,4			2,3		2,8	2,1
62.0m									2,3			2,1			1,9
64.0m															

* Preliminary lifting table, may deviate after calculations / adjustments

MAIN BOOM CONFIGURATIONS

Boom length	Boom insert		
	3m	6m	9m
18	-	-	-
21	1	-	-
24	-	1	-
27	1	1	-
30	1	-	1
33	-	1	1
36	1	1	1
39	2	1	1
42	-	1	2
45	1	1	2
48	2	1	2
51	-	1	3
54	1	1	3
57	2	2	3
60	-	1	4
63	1	1	4
66	2	1	4
69	-	1	5
72	1	1	5
75	2	1	5

FIXED JIB & LUFFING JIB CONFIGURATIONS

FIXED JIB

Jib Length	Insert		Boom length	Boom & jib angle
	3m	6m		
13	1	-	39-63	15°, 30°
19	1	1	39-63	15°, 30°
25	1	2	39-63	15°, 30°
31	1	3	39-63	15°, 30°

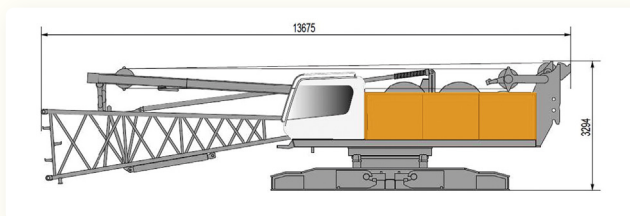
LUFFING JIB

Jib Length	Insert			Boom length	Boom angle
	3m	6m	9m		
19	1	1	-	33,5 ~ 48,5	66° - 84°
22	1	-	1	33,5 ~ 48,5	66° - 84°
25	-	1	1	33,5 ~ 48,5	66° - 84°
28	1	1	1	33,5 ~ 48,5	66° - 84°
31	1	-	2	33,5 ~ 48,5	66° - 84°
34	-	1	2	33,5 ~ 48,5	66° - 84°
37	1	1	2	33,5 ~ 48,5	66° - 84°
40	-	2	2	33,5 ~ 48,5	66° - 84°
43	1	2	2	33,5 ~ 48,5	66° - 84°
46	-	3	2	33,5 ~ 48,5	66° - 84°
49	1	3	2	33,5 ~ 48,5	66° - 84°

TRANSPORT | DIMENSIONS AND WEIGHTS

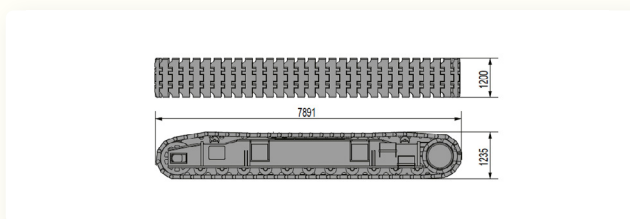
BASIC MACHINE X1

Length: 13.675m
Width: 3.294m
Height: 3.300m
Weight: 36000 kg



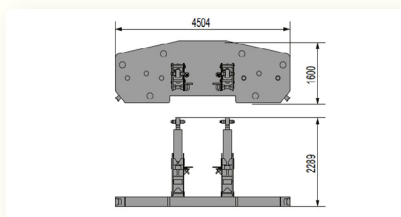
CRAWLERS X2

Length: 7.891m
Width: 1.235m
Height: 1.200m
Weight: 18500 kg



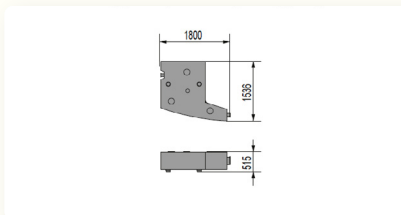
BASE COUNTERWEIGHT X1

Length: 4.504m
Width: 2.289m
Height: 16000m
Weight: 7000 kg



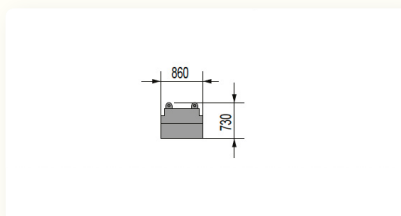
COUNTERWEIGHT A X8

Length: 1.844m
Width: 1.616m
Height: 0.565m
Weight: 5470 kg



COUNTERWEIGHT B X1

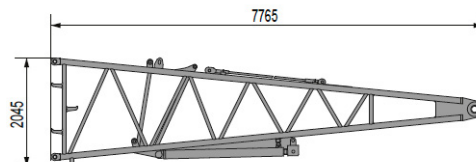
Length: 0,86m
Width: 0,86m
Height: 0.73m
Weight: 2152 kg



TRANSPORT | DIMENSIONS AND WEIGHTS

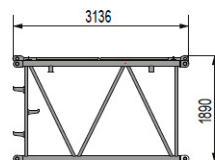
LOWER BOOM X1

Length: 7.765m
Width: 1830m
Height: 2.045m
Weight: 2012 kg



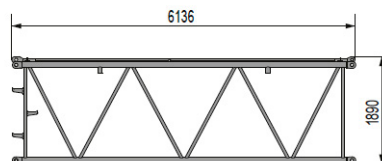
BOOM SECTION 3M X2

Length: 3.136m
Width: 1.700m
Height: 1890m
Weight: 663 kg



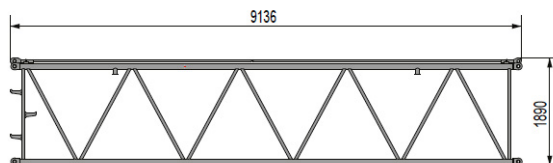
BOOM SECTION 6M X1

Length: 6.136m
Width: 1.700m
Height: 1.890m
Weight: 1086 kg



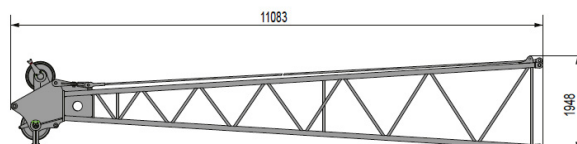
BOOM SECTION 9M X5

Length: 9.136m
Width: 1.700m
Height: 1.89m
Weight: 1361 kg



BOOM HEAD X1

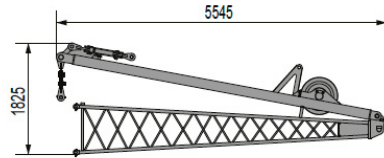
Length: 11.083m
Width: 1.810m
Height: 1948m
Weight: 2460 kg



TRANSPORT | DIMENSIONS AND WEIGHTS

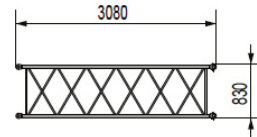
FIX JIB LOWER BOOM

Length: 5.545m
Width: 1.808m
Height: 1.825m
Weight: 919 kg



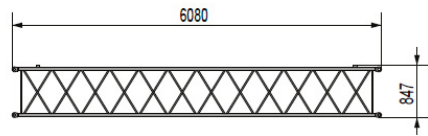
FIX JIB EXTENSION 3M

Length: 3.080m
Width: 1.006m
Height: 0.83m
Weight: 118.5g



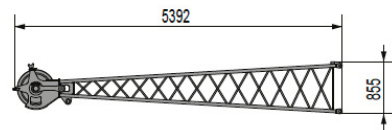
FIX JIB EXTENSION 6M

Length: 6.060m
Width: 1.006m
Height: 0.847m
Weight: 225g



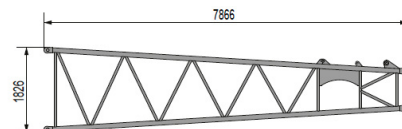
FIX JIB HEAD X1

Length: 5.392m
Width: 0.991m
Height: 0.855m
Weight: 314 kg



ADAPTER PIECE X1

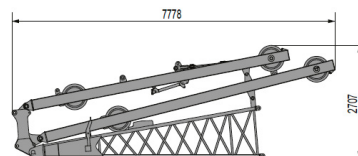
Length: 7.866m
Width: 1.810m
Height: 1.825m
Weight: 1496g



TRANSPORT | DIMENSIONS AND WEIGHTS

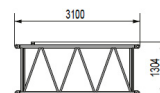
LUFFING JIB LOWER BOOM X1

Length: 7.778m
Width: 1.420m
Height: 2.707m
Weight: 3051 kg



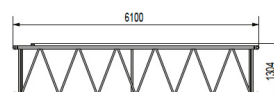
LUFFING JIB EXTENSION 3M X1

Length: 3.100m
Width: 1.250m
Height: 1.304m
Weight: 280 kg



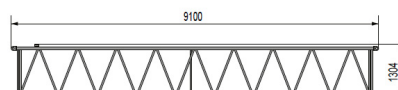
LUFFING JIB EXTENSION 6M X3

Length: 6.100m
Width: 1.250m
Height: 1.304m
Weight: 495 kg



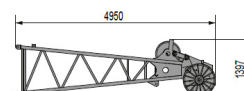
LUFFING JIB EXTENSION 9M X2

Length: 9.100m
Width: 1.250m
Height: 1.404m
Weight: 709 kg

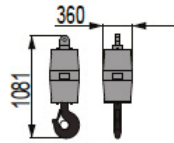


LUFFING JIB HEAD X1

Length: 7.866m
Width: 1.810m
Height: 1.825m
Weight: 1496 kg

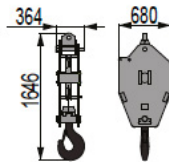


TRANSPORT | DIMENSIONS AND WEIGHTS



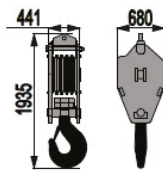
15T HOOK X1

Length: 0.360m
Width: 0.360m
Height: 1.081m
Weight: 328 kg



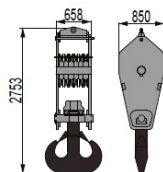
40T HOOK X1

Length: 0.680m
Width: 0.364m
Height: 1.646m
Weight: 550 kg



80T HOOK X1

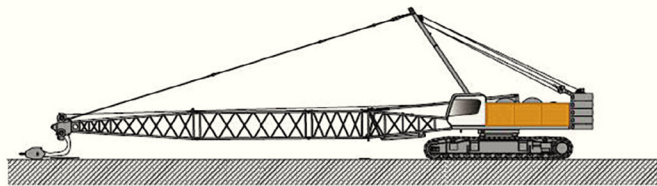
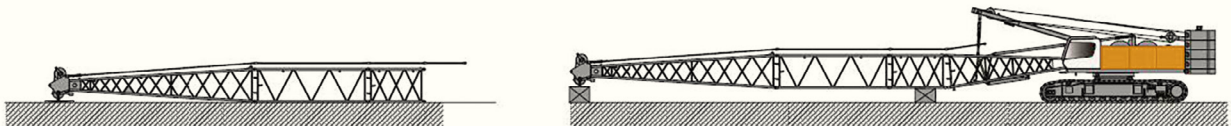
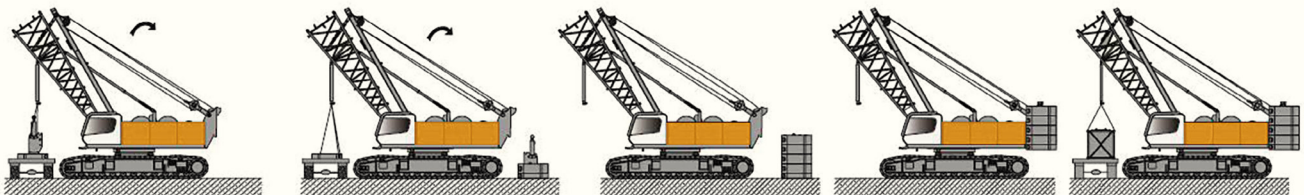
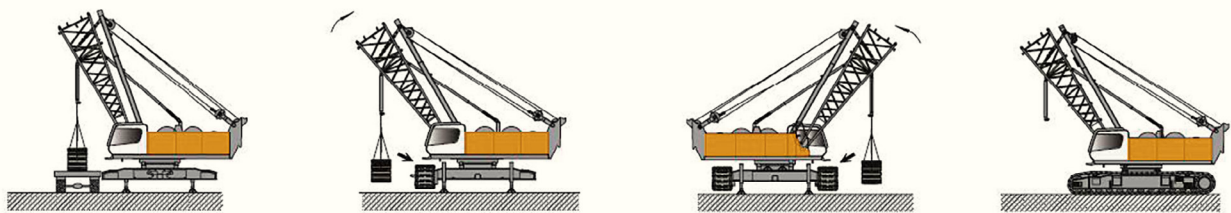
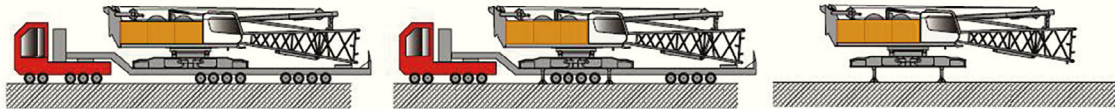
Length: 0.680m
Width: 0.441m
Height: 1.935m
Weight: 1030 kg



135T HOOK X1

Length: 0.850m
Width: 0.658m
Height: 2.753m
Weight: 2809 kg

TRANSPORT | DIMENSIONS AND WEIGHTS





PV-E CRANE

PV-E Crane B.V.

Everdenberg 17

4902 TT Oosterhout

The Netherlands

+31 (0)184 - 425 949

www.pv-ecrane.com

info@pvecrane.com

THE NEW STANDARD IN ELECTRIC CRAWLER CRANES

