

Electric Crawler Crane

MODEL ECT120



Eco-friendly



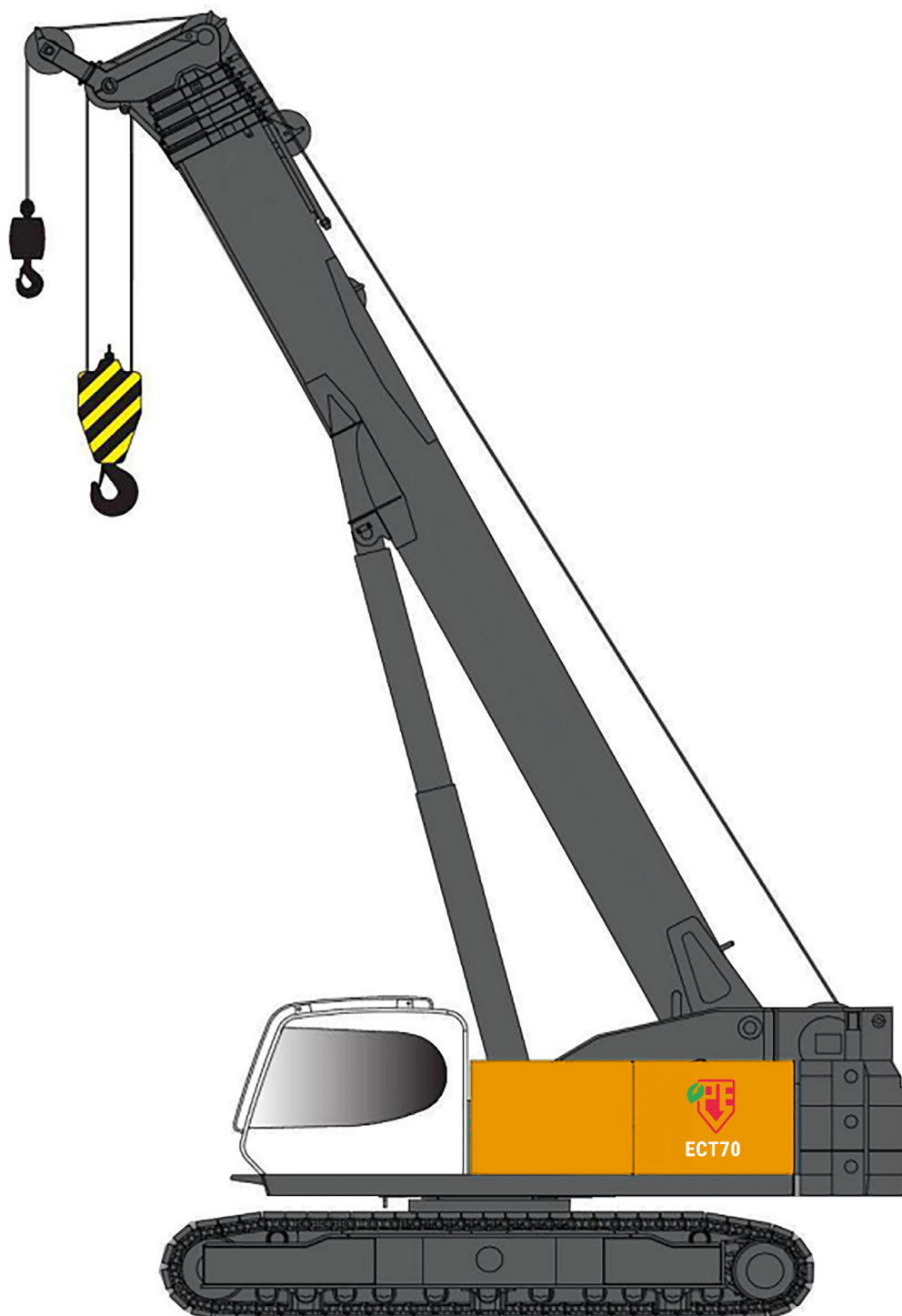
100% electric



Less noise



Zero emission



PV-E Crane B.V.
Everdenberg 17
4902 TT Oosterhout

+31 (0)184 - 425 949
www.pv-ecrane.com
info@pv-ecrane.com



PV-E CRANE

CONTENTS

1 Features & technical data	Pagina 3
2 Safety device	Pagina 3
3 Overall dimension	Pagina 4
4 Machine configuration	Pagina 5
5 Notes for load chart	Pagina 6
6 Working range-boom	Pagina 7
7 Boom load chart	Pagina 8
8 Short runner load chart	Pagina 9 t/m 12
9 Working range-fixed jib A	Pagina 13
10 Boom load chart	Pagina 14
11 Working range-fixed jib B	Pagina 15
12 Transportation dimensions and weights	Pagina 16 t/m 23



FEATURES & TECHNICAL DATA



Power system

200kW Eletromotor
260kWh/650 volt battery pack
(2 x 130kWh interchangeable)
Lithium-iron-phosphate (LiFeP04)
Interchangeable
100% maintenance free and recycleble
Work hours: 7,5-8 hours
Fully recharged: 6,5 hour (63A)
Active cooling system



Hydraulic system

The hydraulic system is load sensor valve controle system, the main pump is double variable pump, main valve is 6 series M7 valve. The hoist mechanism, undercarriage adopt the variable system, and van realize stepless shift gears.
Hydraulic oil tank capacity: 1750L



Boom device

Use the imported high strenght steel plate, the U-type section lifting boom with fine designed and manufactured, the dynamic performance is much better. The telescopic mechanism is composed of cylinder and rope blocks, with better telescopic performance.



Self-assembly device

The superstructure is equipped with self-assembly cylinder and undercarriage is equipped with outrigger cylinder. The counterweight, central ballast track and extension frame can be realized with self-assembly fuction; High efficiency, safety and fast self-assembly fuction can fulfill the quick assembly

SAFETY DEVICE

Moment limiter

Import moment limiter system, monitor the base machine's status at real-time, and limit to the overload operation.

Display current rated load, actual load, working radius, boom elevation, wind speed, pilot pressure, engine parameter (Rev., engine oil pressure, water temperature) etc. at the real-time, and provide sound light alarm and limit.

Hoisting Height Limiter

Avoid hook pulley block bump with boom head extrusion.

Lowering Dept Limiter

When the hook is under max. allowed lowering dept. prevent the wire rope coming off the hoist.

Caution Light

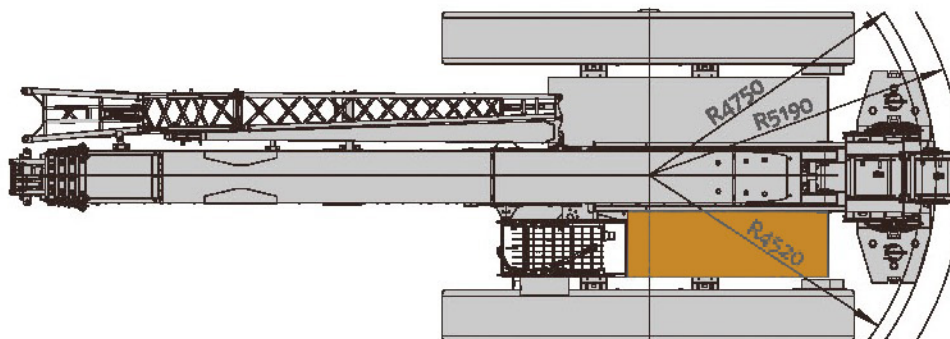
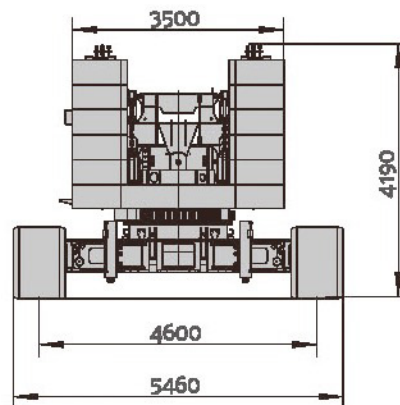
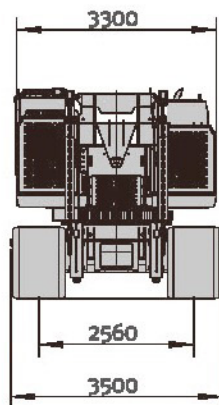
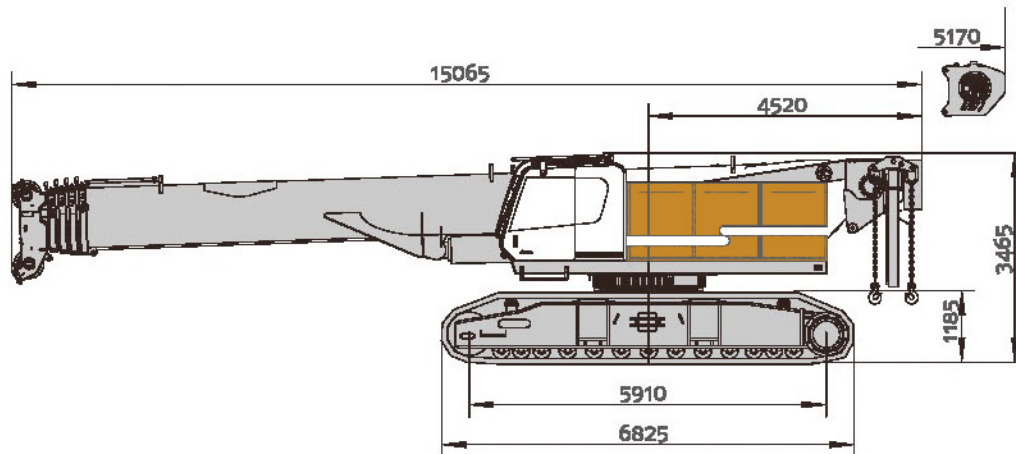
The boom head has caution light, and outside cab istalls with tri-color light.

Tri-color light (red. yellow, green) display the current load status of crane

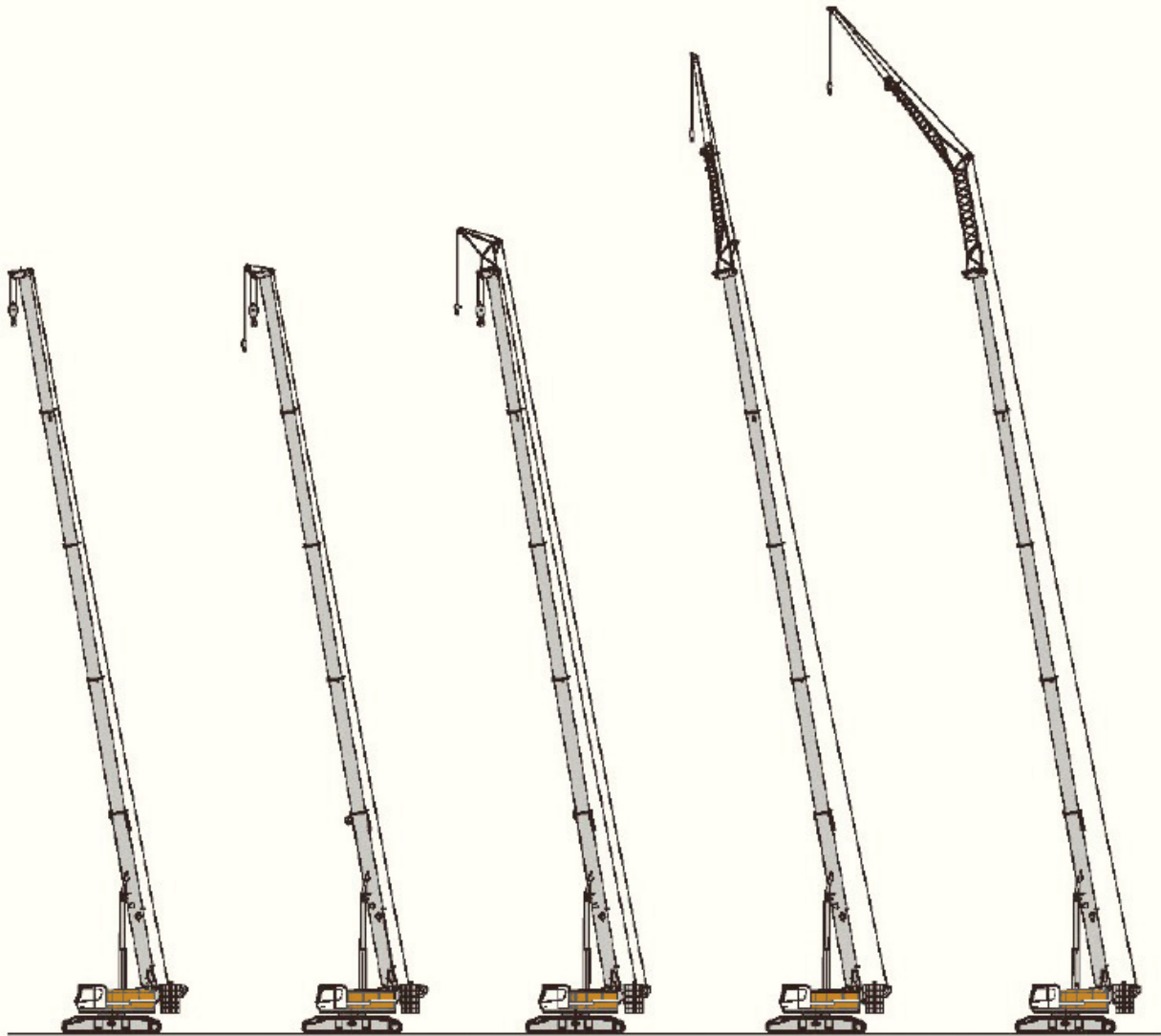
Brake

The main aux.hoist mechanism, slewing mechanism, undercarriage are equipped with brake, to realize the brake with slow-down, and make the operation mechanism keep still during operating when the crane stops.

OVERALL DIMENSIONS



MACHINE CONFIGURATION



Boom	Short runner	Long runner	Fixed jib A	Fixed jib B
Max. lifting capacity: 100tx4m	Max. lifting capacity: 8tx4m	Max. lifting capacity: 11tx4m	Max. lifting capacity: 13.6tx5t	Max. lifting capacity: 6.6tx5m
Max. boom combination: 50m	Max. boom combination: 50+0.6m	Max. boom combination: 50+3.2m	Max. boom combination: 50+15m	Max. boom combination: 50+21m

NOTES FOR LOAD CHART

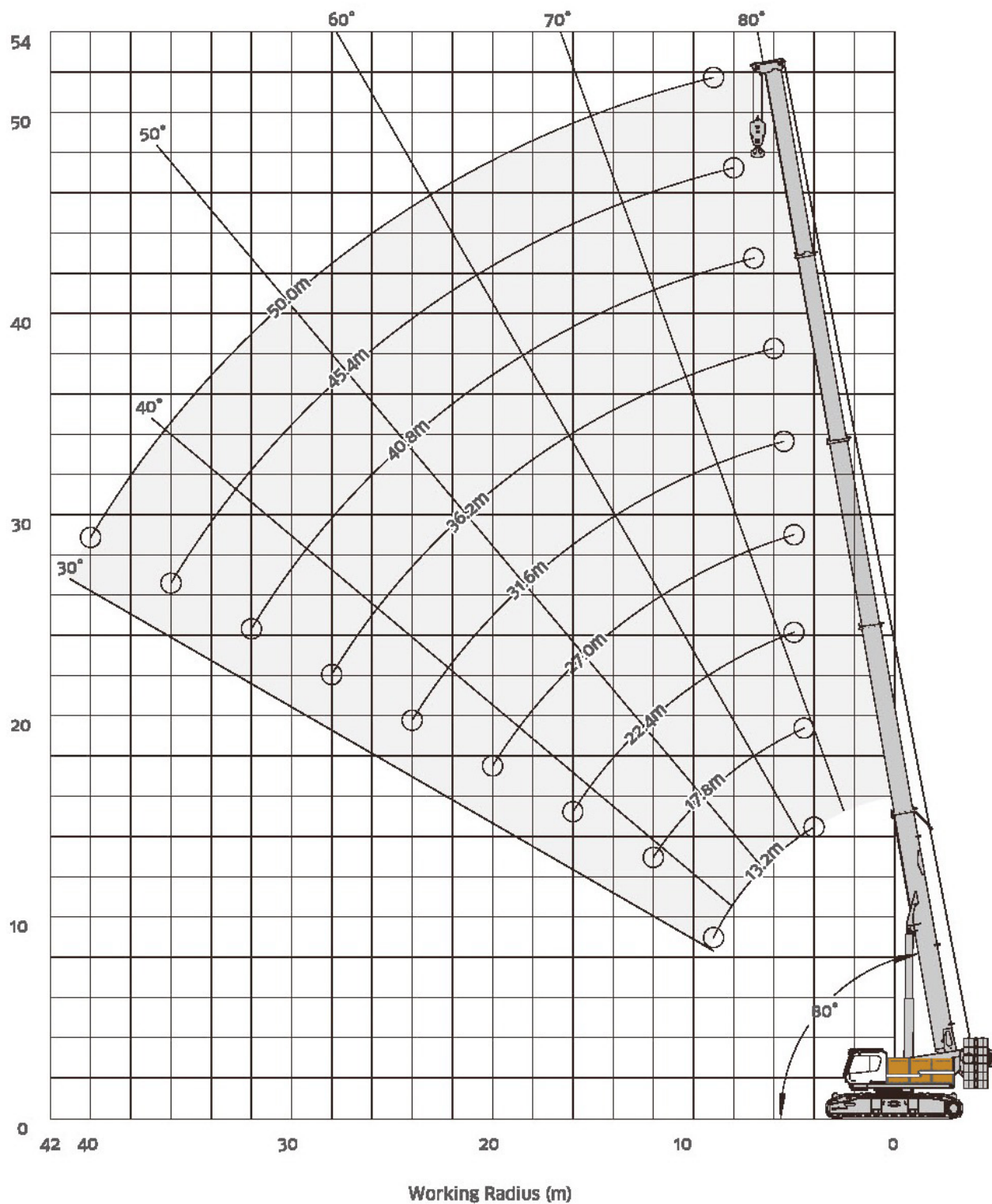
- 1** This crane is calculated according to EN13000 standard;
- 2** The lifting capacities are for reference only. For actual lifting capacities please refer to the load chart in the cabin or operation manual. The lifting capacities as stated are only valid for lifting activities.
- 3** The unit in the load chart is (t), working radius is (m), the value in the load chart should be deduct the self-weight of hooks, slings, etc.;
- 4** Only installed with boom, the max. allowed working speed is 13.8m/s, other working conditions max. allowed working wind speed <9.8m/s;
- 5** Only installed with boom, wind speed >21m/s (other working conditions >15m/s), and the boom should be placed flatly;
- 6** Use the auxiliary pulley block when the lifting capacity is more than 74.3t;
- 7** The value in load chart is calculated based on balance load, not including impact load under sudden stop, ground conditions, wind force load, operation speed and other effect, if under such conditions, and the operator must reduce the load;
- 8** Counterweight combination, hook selection, crane operation please refer to Operation Manual strictly;
- 9** When the undercarriage width is less than 4600mm, and it needs to slew, please operate according to Operation Manual.

Load	No. of sheaves	No. lines	Weight
120T*	9	17	1450kg
75T*	5	10	1100kg
25T	1	3	435kg
9T	0	1	250kg

120T*, 75T*, its's either -or



WORKING RANGE-BOOM



BOOM LOAD CHART

Unit: t

Radius	Boom Length									Radius
	13.2m	17.8m	22.4m	27.0m	31.6m	36.2m	40.8m	45.4m	50.0m	
2.5m	120°									
3.0m	100°									
4.0m	100°									4.0m
4.5m	74.3	74.3								4.5m
5.0m	74.3	72.2	49.0	30.0						5.0m
5.5m	68.6	68.5	49.0	30.0	29.4					5.5m
6.0m	65.2	65.2	49.0	30.0	29.4	28.5				6.0m
7.0m	56.5	56.5	48.8	30.0	29.4	26.6	22.3			7.0m
8.0m	49.3	48.9	45.0	30.0	29.4	25.0	21.0	17.7		8.0m
9.0m	41.3	40.5	39.0	30.0	27.5	23.5	19.9	16.9	13.5	9.0m
10.0m		34.1	33.6	30.0	25.8	22.2	18.9	16.2	13.1	10.0m
12.0m		25.2	24.8	26.1	23.1	20.0	17.2	14.8	12.2	12.0m
14.0m			19.0	20.2	20.9	18.2	15.7	13.6	11.4	14.0m
16.0m			14.9	16.0	16.9	16.7	14.5	12.7	10.8	16.0m
18.0m				12.9	13.7	14.3	13.5	11.8	10.2	18.0m
20.0m				10.5	11.3	11.9	12.3	11.1	9.6	20.0m
22.0m					9.4	10.0	10.4	10.4	9.1	22.0m
24.0m					7.8	8.4	8.8	9.2	8.6	24.0m
26.0m						7.1	7.5	7.8	8.1	26.0m
28.0m						6.0	6.4	6.7	7.0	28.0m
30.0m							5.4	5.8	6.0	30.0m
32.0m							4.6	4.9	5.2	32.0m
34.0m								4.2	4.5	34.0m
36.0m								3.6	3.8	36.0m
38.0m									3.3	38.0m
40.0m									2.8	40.0m
Parts	10	10	7	4	4	4	3	3	2	Parts

*Need Auxiliart Pulley

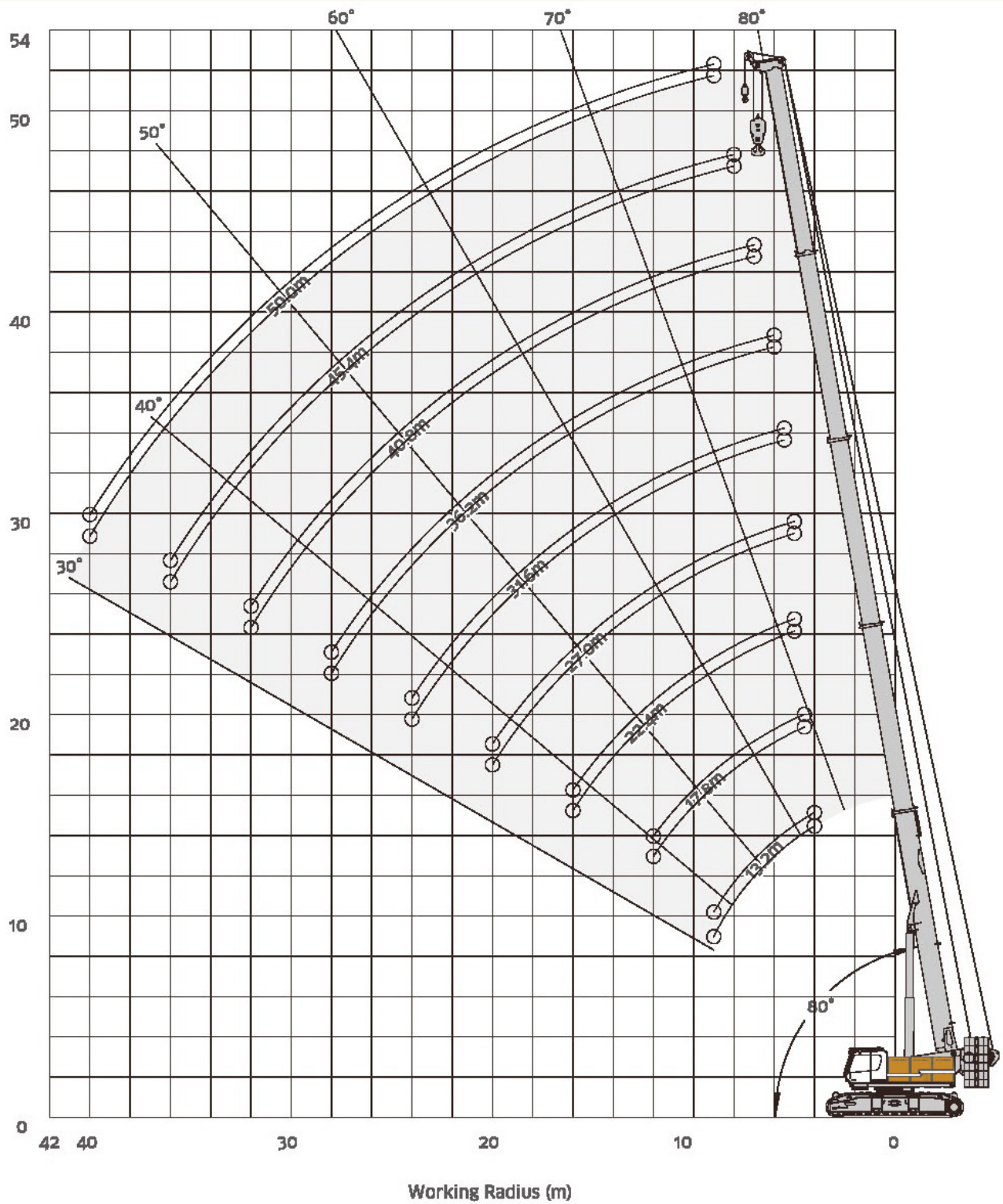
Unit: t

Radius	Boom Length									Radius
	13.2m	17.8m	22.4m	27.0m	31.6m	36.2m	40.8m	45.4m	50.0m	
4.0m	71.2									4.0m
4.5m	59.7	52.3								4.5m
5.0m	48.3	42.8	38.7	30.0						5.0m
5.5m	41.9	37.3	33.8	30.0	29.4					5.5m
6.0m	35.1	31.8	28.9	28.8	28.2	27.5				6.0m
7.0m	25.9	24.6	22.4	22.7	22.6	22.3	21.8			7.0m
8.0m	19.8	19.0	17.8	18.3	18.5	18.4	18.1	17.7		8.0m
9.0m	15.6	14.8	14.3	15.0	15.3	15.4	15.3	15.1	13.5	9.0m
10.0m		11.7	11.	12.4	12.8	13.0	13.3	12.9	12.8	10.0m
12.0m		7.5	7.1	8.3	9.1	9.4	9.6	9.6	9.6	12.0m
14.0m			4.3	5.5	6.3	6.9	7.1	7.3	7.3	14.0m
16.0m			2.3	3.5	4.3	4.9	5.3	5.5	5.6	16.0m
18.0m				2.0	2.8	3.3	3.8	4.1	4.2	18.0m
20.0m						2.2	2.6	3.0	3.2	20.0m
22.0m							1.7	2.0	2.3	22.0m
24.0m										24.0m
26.0m										26.0m
28.0m										28.0m
30.0m										30.0m
32.0m										32.0m
34.0m										34.0m
36.0m										36.0m
38.0m										38.0m
40.0m										40.0m
Parts	10	10	7	4	4	4	3	3	2	Parts

*Need Auxiliart Pulley

* Preliminary lifting table, may deviate after calculations / adjustments

SHORT RUNNER LOAD CHART



SHORT RUNNER LOAD CHART

Unit:

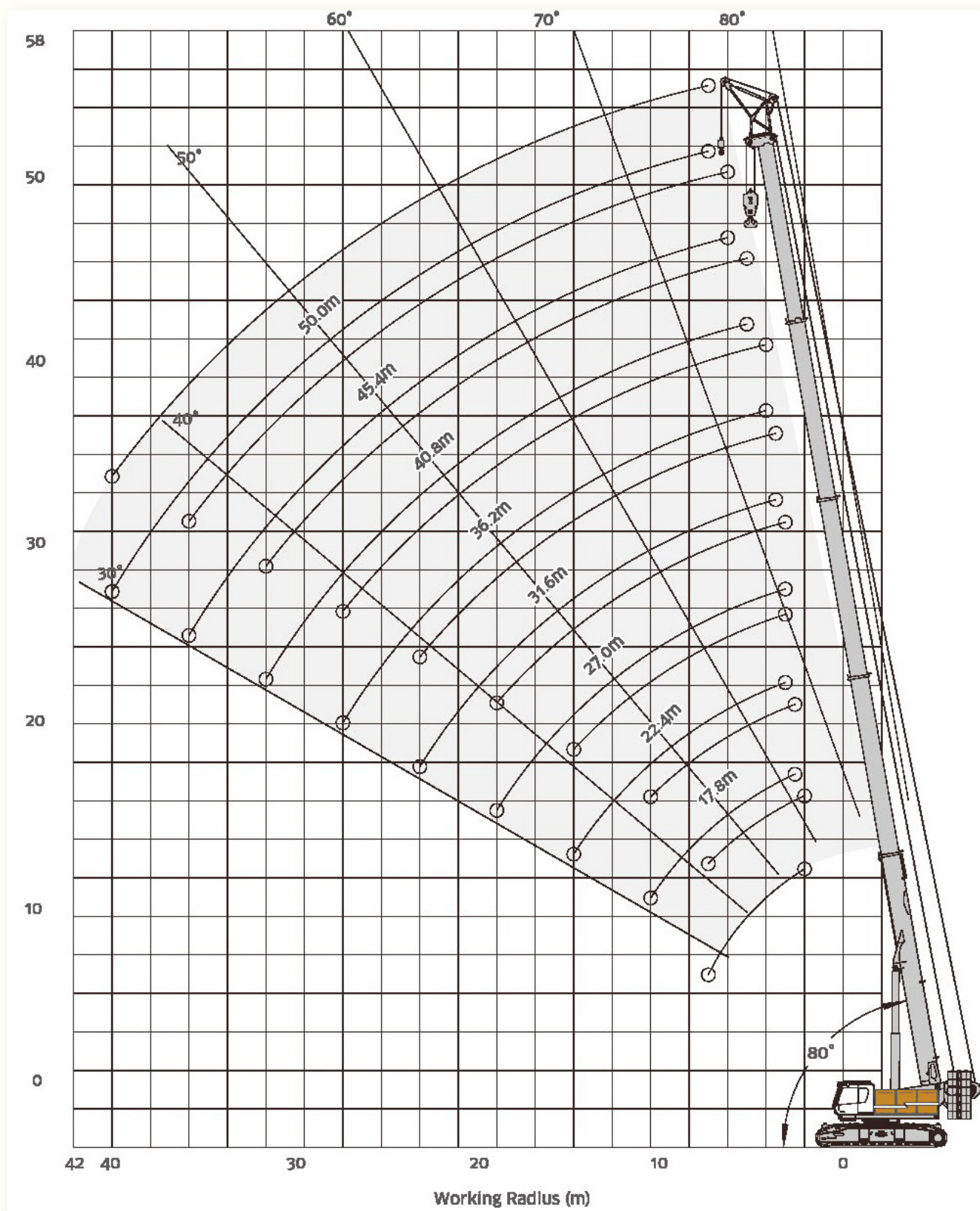
Short Runner	Main Boom	360°	4500	36.8t	15t	0.3°	Main Hook			
Radius	Boom Length									Radius
	13.2m	17.8m	22.4m	27.0m	31.6m	36.2m	40.8m	45.4m	50.0m	
4.0m	74.3									4.0m
4.5m	74.2	74.2								4.5m
5.0m	74.2	72.1	48.9	29.9						5.0m
5.5m	68.5	68.4	48.9	29.9	29.3					5.5m
6.0m	65.1	65.1	48.9	29.9	29.3	28.4				6.0m
7.0m	56.4	56.4	48.7	29.9	29.3	26.5	22.2			7.0m
8.0m	49.2	48.8	44.9	29.9	29.3	24.9	20.9	17.6		8.0m
9.0m	41.2	40.4	38.9	29.9	27.4	23.4	19.8	16.8	13.4	9.0m
10.0m		34.0	33.5	29.9	25.7	22.1	18.8	16.1	13.0	10.0m
12.0m		25.1	24.7	26.0	23.0	19.9	17.1	14.7	12.1	12.0m
14.0m			18.9	20.1	20.8	18.1	15.6	13.5	11.3	14.0m
16.0m			14.8	15.9	16.8	16.6	14.4	12.6	10.7	16.0m
18.0m				12.8	13.6	14.2	13.4	11.7	10.1	18.0m
20.0m				10.4	11.2	11.8	12.2	11.0	9.5	20.0m
22.0m					9.3	9.9	10.3	10.3	9.0	22.0m
24.0m					7.7	8.3	8.7	9.1	8.5	24.0m
26.0m						7.0	7.4	7.7	8.0	26.0m
28.0m						5.9	6.3	6.6	6.9	28.0m
30.0m							5.3	5.7	5.9	30.0m
32.0m							4.5	4.8	5.1	32.0m
34.0m								4.1	4.4	34.0m
36.0m								3.5	3.7	36.0m
38.0m									3.2	38.0m
40.0m									2.7	40.0m
Parts	10	10	7	4	4	4	3	3	2	Parts

Unit:

Short Runner	Main Boom	360°	4500	36.8t	15t	0.3°	Aux. Hook			
Radius	Boom Length									Radius
	13.2m	17.8m	22.4m	27.0m	31.6m	36.2m	40.8m	45.4m	50.0m	
4.0m	8.0									4.0m
4.5m	8.0	8.0								4.5m
5.0m	8.0	8.0	8.0	8.0						5.0m
5.5m	8.0	8.0	8.0	8.0	8.0					5.5m
6.0m	8.0	8.0	8.0	8.0	8.0	8.0				6.0m
7.0m	8.0	8.0	8.0	8.0	8.0	8.0	8.0			7.0m
8.0m	8.0	8.0	8.0	8.0	8.0	8.0	8.0	8.0		8.0m
9.0m	8.0	8.0	8.0	8.0	8.0	8.0	8.0	8.0	8.0	9.0m
10.0m		8.0	8.0	8.0	8.0	8.0	8.0	8.0	8.0	10.0m
12.0m		8.0	8.0	8.0	8.0	8.0	8.0	8.0	8.0	12.0m
14.0m			8.0	8.0	8.0	8.0	8.0	8.0	8.0	14.0m
16.0m			8.0	8.0	8.0	8.0	8.0	8.0	8.0	16.0m
18.0m				8.0	8.0	8.0	8.0	8.0	8.0	18.0m
20.0m					8.0	8.0	8.0	8.0	8.0	20.0m
22.0m					8.0	8.0	8.0	8.0	8.0	22.0m
24.0m					7.8	8.0	8.0	8.0	8.0	24.0m
26.0m						7.1	7.5	7.8	8.0	26.0m
28.0m						6.0	6.4	6.7	7.0	28.0m
30.0m								5.8	6.0	30.0m
32.0m								4.9	5.2	32.0m
34.0m								4.2	4.5	34.0m
36.0m								3.6	3.8	36.0m
38.0m									3.3	38.0m
40.0m									2.8	40.0m
Parts	1	1	1	1	1	1	1	1	1	Parts

* Preliminary lifting table, may deviate after calculations / adjustments

SHORT RUNNER LOAD CHART



SHORT RUNNER LOAD CHART

Unit:t

Long Runner	Main Boom	360°	4500	36.6t	15t	0.3°	Main Hook			
Radius	Boom Length									Radius
	13.2m	17.8m	22.4m	27.0m	31.6m	36.2m	40.8m	45.4m	50.0m	
4.0m	74.3									4.0m
4.5m	72.8	72.8								4.5m
5.0m	72.8	70.7	47.5	28.5						5.0m
5.5m	67.1	67.0	47.5	28.5	27.9					5.5m
6.0m	63.7	63.7	47.5	28.5	27.9	27.0				6.0m
7.0m	55.0	55.0	47.3	28.5	27.9	25.1	20.8			7.0m
8.0m	47.8	47.4	43.5	28.5	27.9	23.5	19.5	16.2		8.0m
9.0m	39.8	39.0	37.5	28.5	26.0	22.0	18.4	15.4	12.0	9.0m
10.0m		32.6	32.1	28.5	24.3	20.7	17.4	14.7	11.6	10.0m
12.0m		23.7	23.3	24.6	21.6	18.5	15.7	13.3	10.7	12.0m
14.0m			17.5	17.3	17.0	16.7	14.2	12.1	9.9	14.0m
16.0m			13.4	13.3	13.2	13.1	13.0	11.2	9.3	16.0m
18.0m				11.4	11.2	11.0	10.6	10.3	8.7	18.0m
20.0m				9.0	8.8	8.6	8.5	8.3	8.1	20.0m
22.0m					7.9	7.7	7.5	7.3	7.1	22.0m
24.0m					6.3	6.1	5.9	5.7	5.5	24.0m
26.0m						5.6	5.3	5.	4.9	26.0m
28.0m						4.5	4.3	4.1	3.9	28.0m
30.0m							3.9	3.7	3.5	30.0m
32.0m							3.1	2.9	2.7	32.0m
34.0m								2.7	2.5	34.0m
36.0m								2.1	1.9	36.0m
38.0m									1.5	38.0m
40.0m									1.0	40.0m
Parts	10	10	7	4	4	4	3	3	2	Parts

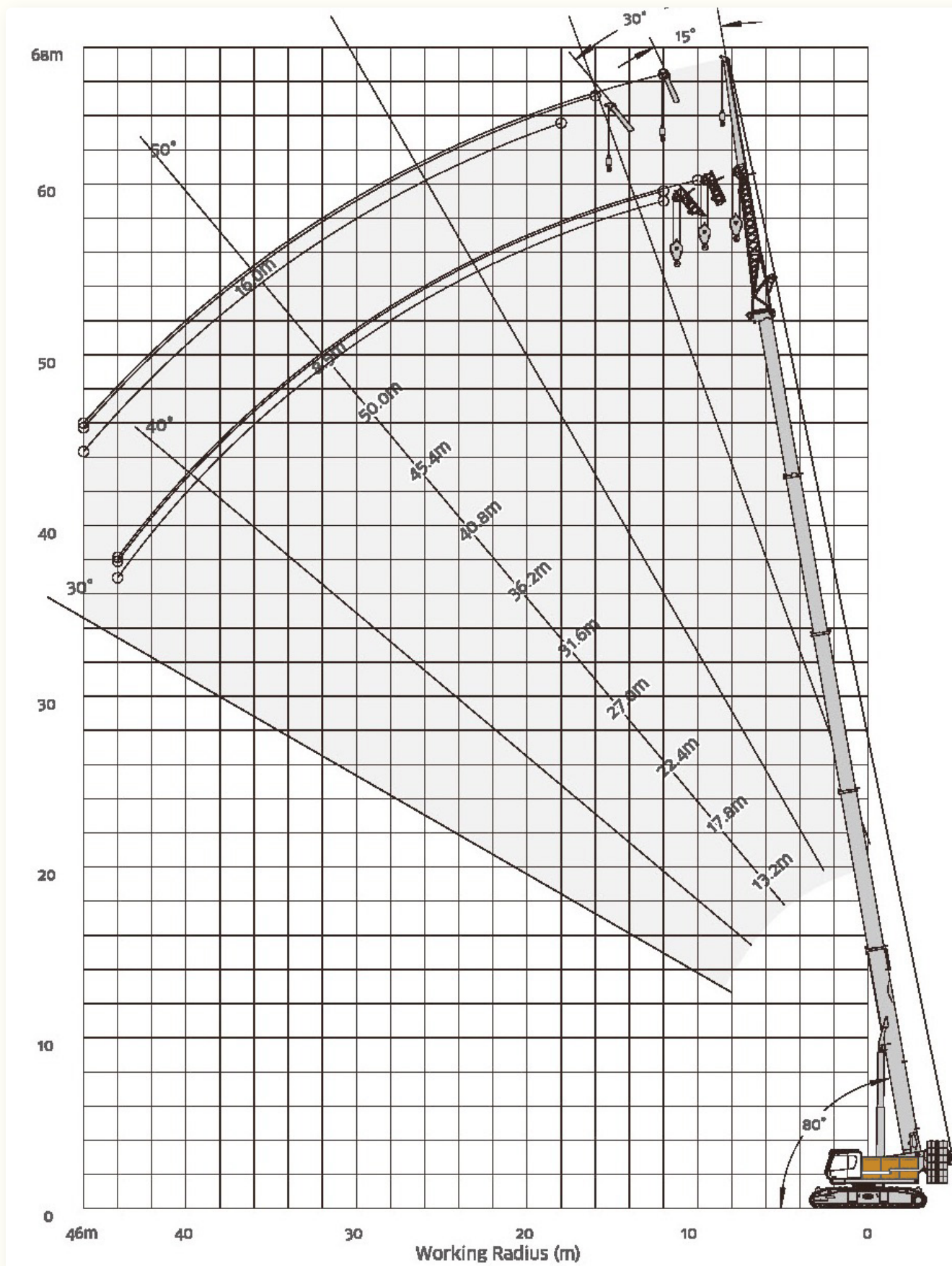
Unit:t

Long Runner	Main Boom	360°	4500	36.6t	15t	0.3°	Aux. Hook			
Radius	Boom Length									Radius
	13.2m	17.8m	22.4m	27.0m	31.6m	36.2m	40.8m	45.4m	50.0m	
4.0m	11.0									4.0m
4.5m	11.0	11.0								4.5m
5.0m	11.0	11.0	11.0							5.0m
5.5m	11.0	11.0	11.0	11.0						5.5m
6.0m	11.0	11.0	11.0	11.0						6.0m
7.0m	11.0	11.0	11.0	11.0	11.0					7.0m
8.0m	11.0	11.0	11.0	11.0	11.0	11.0				8.0m
9.0m	11.0	11.0	11.0	11.0	11.0	11.0	11.0			9.0m
10.0m		11.0	11.0	11.0	11.0	11.0	11.0	11.0		10.0m
12.0m		11.0	11.0	11.0	11.0	11.0	11.0	11.0	11.0	12.0m
14.0m			11.0	11.0	11.0	11.0	11.0	11.0	11.0	14.0m
16.0m			11.0	11.0	11.0	11.0	11.0	11.0	10.8	16.0m
18.0m				11.0	11.0	11.0	11.0	11.0	10.2	18.0m
20.0m				10.5	10.5	10.5	10.5	10.5	9.6	20.0m
22.0m					9.4	9.3	9.2	9.1	9.1	22.0m
24.0m					7.8	7.7	7.6	7.5	7.3	24.0m
26.0m						7.1	7.0	6.9	6.8	26.0m
28.0m						6.0	5.9	5.8	5.7	28.0m
30.0m							5.4	5.3	5.2	30.0m
32.0m							4.6	4.5	4.3	32.0m
34.0m								4.2	4.1	34.0m
36.0m								3.6	3.5	36.0m
38.0m									3.2	38.0m
40.0m									2.8	40.0m
Parts	2	2	2	2	2	2	2	2	2	Parts

* Preliminary lifting table, may deviate after calculations / adjustments




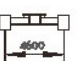

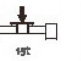
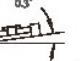



WORKING RANGE-FIXED JIB A











SHORT RUNNER

Unit:t

Fixed Jib		Main Boom		360°		4600		36.6t		19t		0.3°		AUX. Hook			
																	
Radius	Boom Length						Radius										
	13.2m			36.2m				40.8m			45.4m			50.0m			
	0°	15°	30°	0°	15°	30°	0°	15°	30°	0°	15°	30°	0°	15°	30°		
5.0m	13.6	11.0														5.0m	
6.0m	12.9	10.5	8.0													6.0m	
7.0m	12.1	10.0	7.8	13.6												7.0m	
8.0m	11.4	9.5	7.6	13.2			12.1									8.0m	
9.0m	10.7	9.0	7.4	12.8	11.0		11.8			9.7						9.0m	
10.0m	9.9	8.5	7.2	12.5	10.7		11.5	10.2		9.5			6.3			10.0m	
12.0m	8.4	7.5	6.8	11.7	10.0	8.0	10.8	9.6	8.0	9.0	8.0		6.0	5.5		12.0m	
14.0m	7.0	6.5	6.4	10.9	9.3	7.5	10.2	9.0	7.5	8.5	7.6	7.3	5.7	5.2	4.6	14.0m	
16.0m	5.5	5.5	6.0	10.2	8.7	7.0	9.5	8.5	7.1	8.0	7.1	6.9	5.4	5.0	4.4	16.0m	
18.0m				9.4	8.0	6.5	8.9	7.9	6.6	7.5	6.7	6.4	5.1	4.7	4.1	18.0m	
20.0m				8.6	7.3	6.0	8.2	7.3	6.1	7.0	6.3	6.0	4.8	4.4	3.9	20.0m	
22.0m				7.9	6.7	5.5	7.6	6.7	5.7	6.5	5.8	5.6	4.5	4.1	3.6	22.0m	
24.0m				7.1	6.0	5.0	6.9	6.1	5.2	6.0	5.4	5.1	4.2	3.9	3.4	24.0m	
26.0m				6.2	5.3	4.5	6.3	5.6	4.8	5.5	4.9	4.7	3.9	3.6	3.2	26.0m	
28.0m				5.2	4.7	4.0	5.4	5.0	4.3	5.0	4.5	4.3	3.6	3.3	2.9	28.0m	
30.0m				4.4	4.	3.5	4.5	4.4	3.8	4.5	4.1	3.8	3.3	3.0	2.7	30.0m	
32.0m				33.6	3.3	3.0	3.8	3.8	3.4	4.0	3.6	3.4	3.0	2.8	2.4	32.0m	
34.0m				3.0	2.7	2.5	3.2	3.2	2.9	3.3	3.2	2.9	2.7	2.5	2.2	34.0m	
36.0m				2.5	2.0	2.0	2.6	2.7	2.4	2.8	2.8	2.5	2.4	2.2	2.0	36.0m	
38.0m							2.1	2.1	2.0	2.3	2.3	2.1	2.1	1.9	1.7	38.0m	
40.0m							1.7	1.5	1.5	1.8	1.9	1.6	1.8	1.7	1.5	40.0m	
42.0m										1.4	1.4	1.2	1.5	1.4	1.2	42.0m	
44.0m										1.0	1.0		1.2	1.1	1.0	44.0m	
Parts	2	2	1	2	2	1	2	2	1	1.	1	1	1	1	1	Parts	

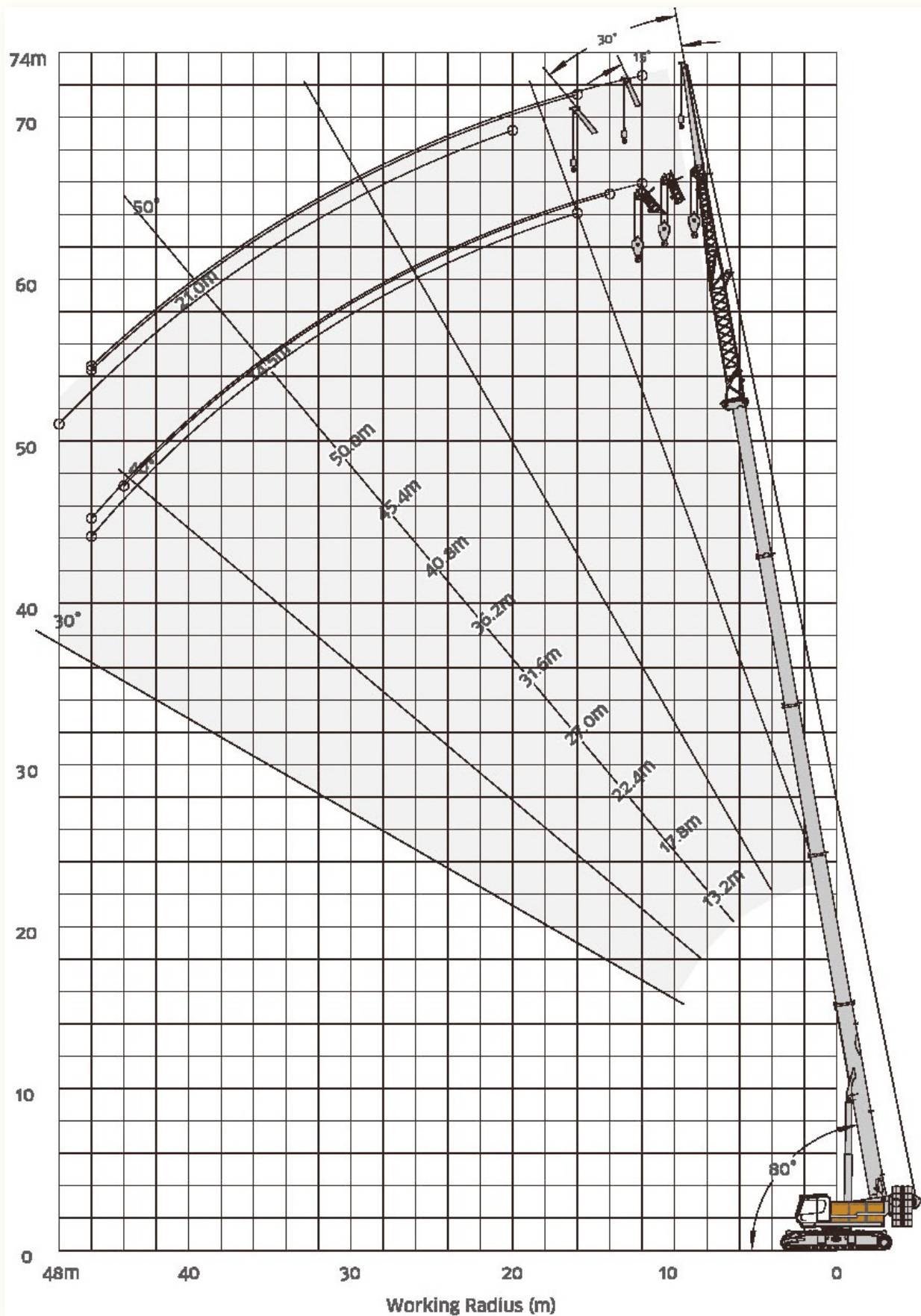
Unit:t

 Fixed Jib 75m		 Main Boom 13.2-50m		 360°		 460m		 36.8t		 15t		 0.3°		 Aux. Hoist			
Radius	Boom Length															Radius	
	13.2m			36.2m			40.8m			45.4m			50.0m				
	0°	15°	30°	0°	15°	30°	0°	15°	30°	0°	15°	30°	0°	15°	30°		
5.0m	5.5															5.0m	
6.0m	5.3															6.0m	
7.0m	5.1	3.6														7.0m	
8.0m	5.0	3.5		5.5												8.0m	
9.0m	4.8	3.4		5.4			4.6									9.0m	
10.0m	4.6	3.2	2.8	5.2			4.5			4.1						10.0m	
12.0m	4.2	3.0	2.7	5.0	3.6		4.3			3.9			3.7			12.0m	
14.0m	3.9	2.7	2.6	4.7	3.4		4.1	3.3		3.8	3.2		3.5			14.0m	
16.0m	3.5	2.5	2.5	4.4	3.3	2.8	3.9	3.1	2.6	3.6	3.1		3.4	3.0		16.0m	
18.0m				4.1	3.1	2.7	3.7	3.0	2.5	3.4	2.9	2.5	3.2	2.9	2.3	18.0m	
20.0m				3.9	2.9	2.5	3.5	2.8	2.4	3.2	2.8	2.4	3.1	2.7	2.2	20.0m	
22.0m				3.6	2.7	2.4	3.3	2.7	2.3	3.1	2.6	2.3	2.9	2.3	2.1	22.0m	
24.0m				3.3	2.6	2.3	3.1	2.5	2.2	2.9	2.5	2.2	2.8	2.5	2.0	24.0m	
26.0m				3.1	2.4	2.2	2.9	2.4	2.1	2.7	2.4	2.1	2.6	2.3	1.9	26.0m	
28.0m				2.8	2.2	2.0	2.7	2.2	2.0	2.6	2.2	2.0	2.5	2.2	1.8	28.0m	
30.0m				2.5	2.0	1.9	2.5	2.1	1.8	2.4	2.1	1.9	2.3	2.1	1.7	30.0m	
32.0m				2.2	1.9	1.8	2.3	1.9	1.7	2.2	1.9	1.7	2.2	1.9	1.7	32.0m	
34.0m				2.0	1.7	1.6	2.1	1.8	1.6	2.1	1.8	1.6	2.0	1.8	1.6	34.0m	
36.0m				1.7	1.5	1.5	1.9	1.6	1.5	1.9	1.7	1.5	1.8	1.7	1.5	36.0m	
38.0m							1.7	1.5	1.4	1.7	1.5	1.4	1.7	1.5	1.4	38.0m	
40.0m							1.5	1.3	1.3	1.5	1.4	1.3	1.5	1.4	1.3	40.0m	
42.0m										1.4	1.2	1.2	1.4	1.3	1.2	42.0m	
44.0m										1.2	1.1	1.1	1.2	1.1	1.1	44.0m	
46.0m													1.1	1.0	1.0	46.0m	
Parts	1	1	1	1	1	1	1	1	1	1	1	1	1	1	1	Parts	

* Preliminary lifting table, may deviate after calculations / adjustments




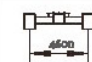

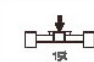




WORKING RANGE-FIXED JIB B






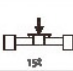
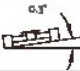



SHORT RUNNER CHART

Unit:t

																			
Radius	Boom Length															Radius			
	13.2m			36.2m			40.8m			45.4m			50.0m						
	0°	15°	30°	0°	15°	30°	0°	15°	30°	0°	15°	30°	0°	15°	30°				
5.0m	6.6																5.0m		
6.0m	6.4	5.2															6.0m		
7.0m	6.1	5.0	4.3														7.0m		
8.0m	5.9	4.9	4.2														8.0m		
9.0m	5.6	4.7	4.1	6.6													9.0m		
10.0m	5.4	4.5	4.0	6.4	5.2		5.6										10.0m		
12.0m	4.9	4.2	3.7	6.1	5.0	4.3	5.3	4.6		5.1	4.5		4.1				12.0m		
14.0m	4.4	3.9	3.5	5.7	4.7	4.1	5.1	4.4	4.1	4.9	4.3	3.8	3.9	3.5			14.0m		
16.0m	4.0	3.5	3.3	5.4	4.5	3.9	4.8	4.2	3.9	4.6	4.1	3.6	3.7	3.3	3.3		16.0m		
18.0m	3.5	3.2	3.1	5.1	4.2	3.7	4.5	3.9	3.7	4.4	3.9	3.4	3.6	3.2	3.1		18.0m		
20.0m	3.0	2.8	2.8	4.7	4.0	3.5	4.3	3.7	3.5	4.1	3.7	3.3	3.4	3.0	3.0		20.0m		
22.0m		2.5	2.6	4.4	3.7	3.3	4.0	3.5	3.3	3.9	3.4	3.1	3.2	2.9	2.8		22.0m		
24.0m				4.0	3.5	3.1	3.7	3.3	3.1	3.7	3.2	2.9	3.0	2.7	2.7		24.0m		
26.0m				3.7	3.2	2.9	3.5	3.0	2.9	3.4	3.0	2.7	2.8	2.6	2.5		26.0m		
28.0m				3.4	3.0	2.6	3.2	2.8	2.7	3.2	2.8	2.5	2.6	2.4	2.4		28.0m		
30.0m				3.0	2.7	2.4	3.0	2.6	2.4	2.9	2.6	2.4	2.5	2.3	2.2		30.0m		
32.0m				5.7	2.5	2.2	2.7	2.4	2.2	2.7	2.4	2.2	2.3	2.1	2.1		32.0m		
34.0m				2.3	2.2	2.0	2.4	2.1	2.0	2.4	2.2	2.0	2.1	2.0	1.9		34.0m		
36.0m				2.0	2.0	1.8	2.2	1.9	1.8	2.2	2.0	1.8	1.9	1.8	1.8		36.0m		
38.0m				1.6	1.7	1.6	1.9	1.7	1.6	2.0	1.7	1.6	1.7	1.7	1.6		38.0m		
40.0m				1.3	1.5	1.4	1.6	1.5	1.4	1.7	1.5	1.5	1.5	1.5	1.5		40.0m		
42.0m					1.2	1.2	1.4	1.2	1.2	1.5	1.3	1.3	1.4	1.4	1.3		42.0m		
44.0m							1.1	1.0	1.0	1.2	1.1	1.1	1.2	1.2	1.2		44.0m		
46.0m										1.0			1.0		1.0		46.0m		
Parts	2	2	1	2	2	1	2	2	1	1	1	1	1	1	1	Parts			

Unit:t

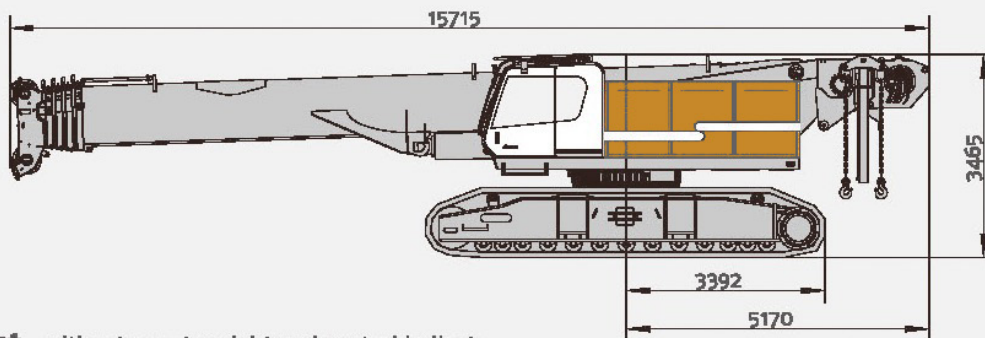
 21m		 13.2-50m		 360°		 4500		 36.8t		 15t		 0.3°		 Aux. Hook					
Radius	Boom Length																Radius		
	13.2m			36.2m			40.8m			45.4m			50.0m						
	0°	15°	30°	0°	15°	30°	0°	15°	30°	0°	15°	30°	0°	15°	30°				
5.0m	3.9																5.0m		
6.0m	3.8																6.0m		
7.0m	3.7																7.0m		
8.0m	3.6	3.2															8.0m		
9.0m	3.5	3.1		3.9													9.0m		
10.0m	3.1	3.0		3.8			3.7										10.0m		
12.0m	3.2	2.9	2.6	3.6			3.5			3.5			2.9				12.0m		
14.0m	3.1	2.7	2.6	3.5	3.2		3.4	3.1		2.4			2.8				14.0m		
16.0m	2.9	2.5	2.6	3.3	3.1	2.6	3.2	3.0		3.2	2.9		2.7	2.5			16.0m		
18.0m	2.7	2.3	2.6	3.1	2.9	2.5	3.1	2.8	2.6	3.1	2.8	2.3	2.6	2.4			18.0m		
20.0m	2.5	2.2	2.6	2.9	2.8	2.4	2.9	2.7	2.5	2.9	2.7	2.2	2.5	2.3	2.1		20.0m		
22.0m		2.0	2.6	2.8	2.6	2.3	2.8	2.6	2.4	2.8	2.5	2.1	2.3	2.2	2.0		22.0m		
24.0m				2.6	2.5	2.3	2.6	2.4	2.3	2.6	2.4	2.0	2.2	2.1	2.0		24.0m		
26.0m				2.4	2.3	2.2	2.5	2.3	2.2	2.5	2.3	2.0	2.1	2.0	1.9		26.0m		
28.0m				2.2	2.2	2.1	2.3	2.2	2.1	2.3	2.2	1.9	2.0	1.9	1.8		28.0m		
30.0m				2.1	2.1	2.0	2.2	2.1	2.0	2.2	2.1	1.8	1.9	1.8	1.7		30.0m		
32.0m				1.9	1.9	1.9	2.0	1.9	1.9	2.0	1.9	1.7	1.8	1.8	1.7		32.0m		
34.0m				1.7	1.8	1.8	1.9	1.8	1.8	1.9	1.8	1.6	1.7	1.7	1.6		34.0m		
36.0m				1.5	1.6	1.8	1.7	1.7	1.7	1.7	1.7	1.5	1.6	1.6	1.5		36.0m		
38.0m				1.4	1.5	1.7	1.6	1.5	1.6	1.6	1.6	1.4	1.4	1.5	1.5		38.0m		
40.0m				1.2	1.3	1.6	1.4	1.4	1.5	1.4	1.5	1.3	1.3	1.4	1.4		40.0m		
42.0m					1.2	1.5	1.3	1.3	1.4	1.3	1.3	1.3	1.2	1.3	1.3		42.0m		
44.0m							1.1	1.1	1.3	1.1	1.2	1.2	1.1	1.2	1.2		44.0m		
46.0m								1.0	1.2	1.0	1.1	1.1	1.0	1.1	1.2		46.0m		
48.0m															1.1		48.0m		
Parts	1	1	1	1	1	1	1	1	1	1	1	1	1	1	1	Parts			

* Preliminary lifting table, may deviate after calculations / adjustments

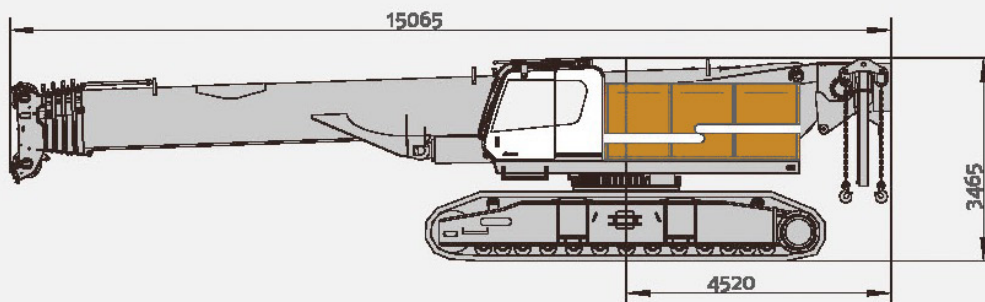


TRANSPORT DIMENSIONS & WEIGHTS

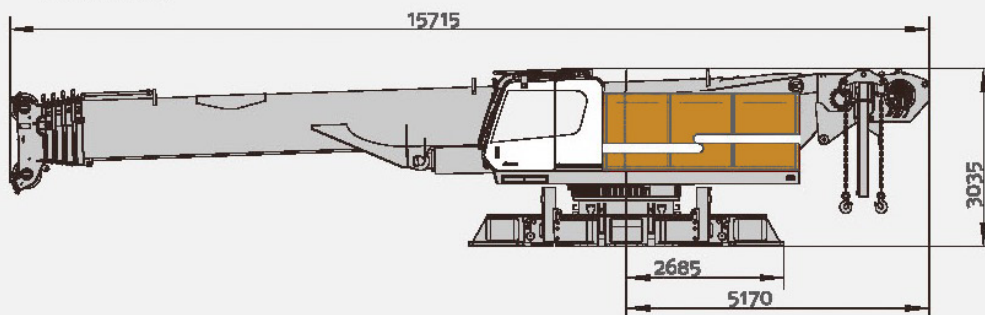
70.0t without counterweight and central ballast
without extension frame, outrigger cylinder



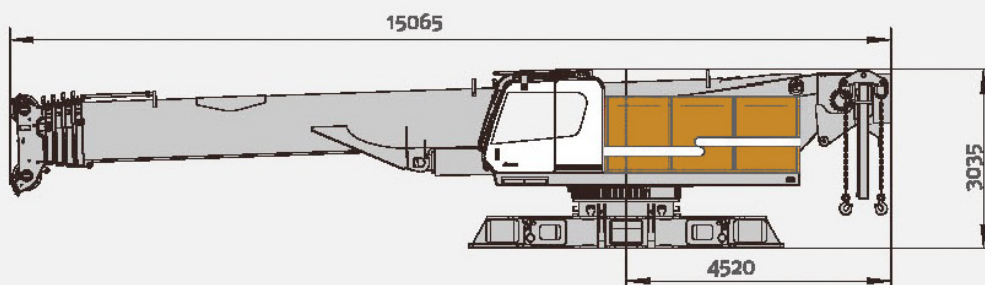
63.2t without counterweight and central ballast
without extension frame, outrigger cylinder, winch 2



50t without counterweight and central ballast
track frame,



46.7t without counterweight and central ballast, track frame , winch 2 and outrigger cylinder



TRANSPORT, DIMENSIONS & WEIGHTS



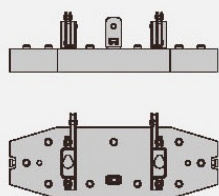
Part A

Length: 880mm
Width: 1200mm
Height: 470mm
Weight: 2,3t



Part B

Length: 1200mm
Width: 1200mm
Height: 240mm
Weight: 2,2t



Part C

Length: 3500mm
Width: 1440mm
Height: 1000mm
Weight: 10,7t

	Part A	Part B	Part C
0	0x	0x	0x
17,8	2x	1x	1x
27,2	6x	1x	1x
36,6	10x	1x	1x



Center counterweight

Length: 1880mm
Width: 1000mm
Height: 840mm
Weight: 7500 kg



Extended frame

Length: 1160mm
Width: 450mm
Height: 540mm
Weight: 0,56t



Short runner

Length: 650mm
Width: 570mm
Height: 500mm
Weight: 0,1t



Longer runner

Length: 2650mm
Width: 750mm
Height: 600mm
Weight: 0,15t



Winch 2

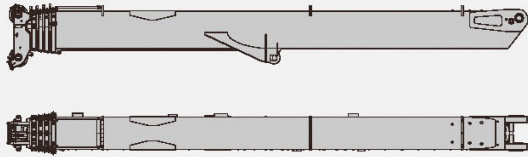
Length: 650mm
Width: 570mm
Height: 500mm
Weight: 0,1t



Replacement ballast for winch 2

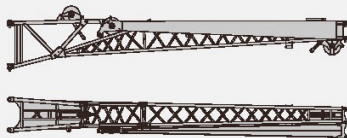
Length: 1350mm
Width: 820mm
Height: 380mm
Weight: 2,2t

TRANSPORT, DIMENSIONS & WEIGHTS



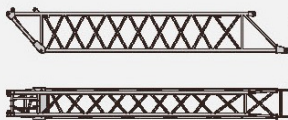
Main boom

Length: 13720mm
Width: 1380mm
Height: 1760mm
Weight: 17t



Fixed jib

Length: 8950mm
Width: 1075mm
Height: 1650mm
Weight: 1,65t



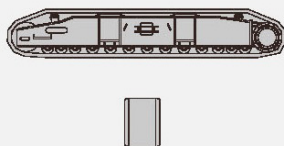
6m extended jib

Length: 6920mm
Width: 775mm
Height: 1105mm
Weight: 0,5t



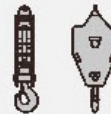
9t hock

Length: 950mm
Width: 360mm
Height: 360mm
Weight: 0,3t



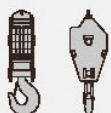
Crawler

Length: 6830mm
Width: 860mm
Height: 1190mm
Weight: 13t



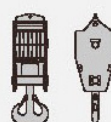
25t hock

Length: 1650mm
Width: 680mm
Height: 350mm
Weight: 0,5t



75t hock

Length: 1950mm
Width: 680mm
Height: 530mm
Weight: 1,1t



120t hock

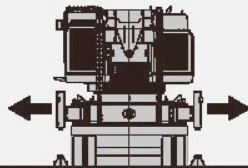
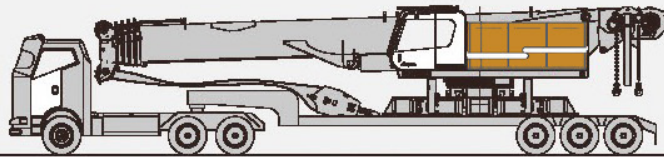
Length: 2050mm
Width: 740mm
Height: 705mm
Weight: 1,5t

TRANSPORT, DIMENSIONS & WEIGHTS

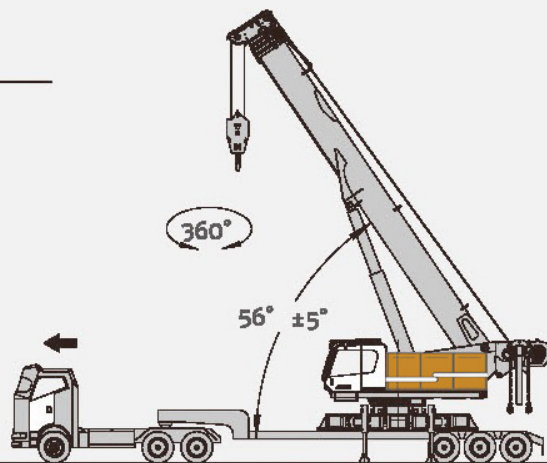
Transportation Plan A

Width: 3000mm

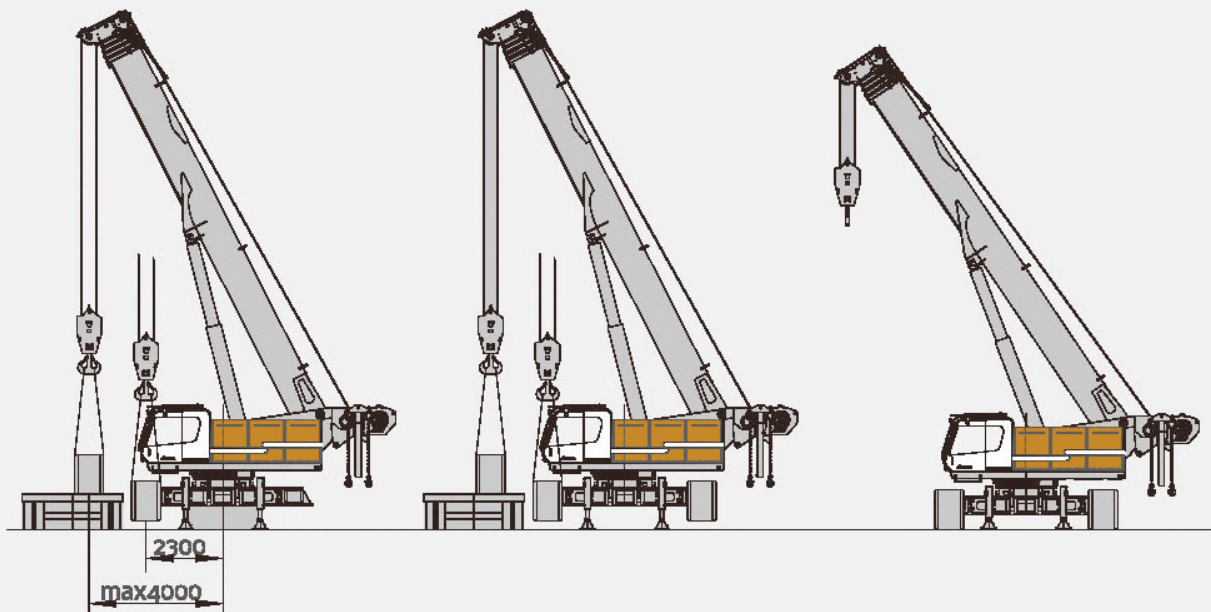
Weight: 50t



Hock	No. of Sheaves	No. Of Line	Weight
100t	7	15	1.5t
75t	5	11	1.1t
25t	1	3	0.5t
9t	0	1	0.3t

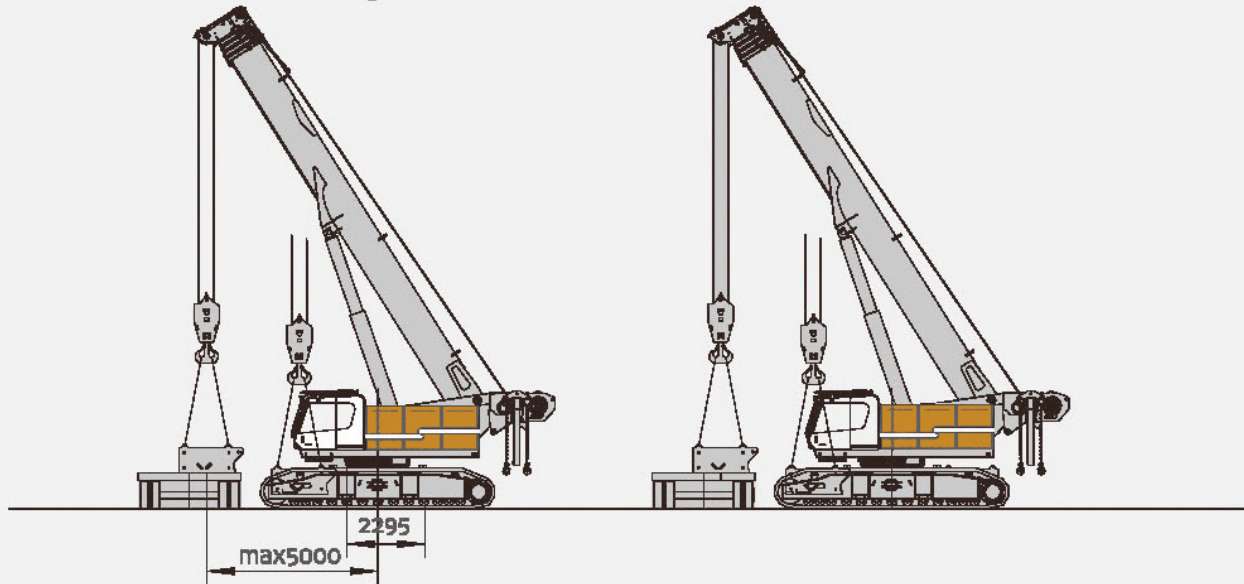


Crawler Assembly

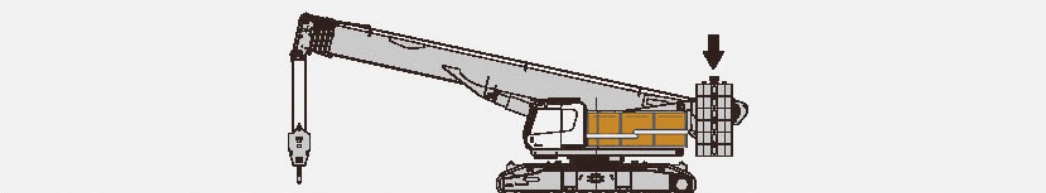
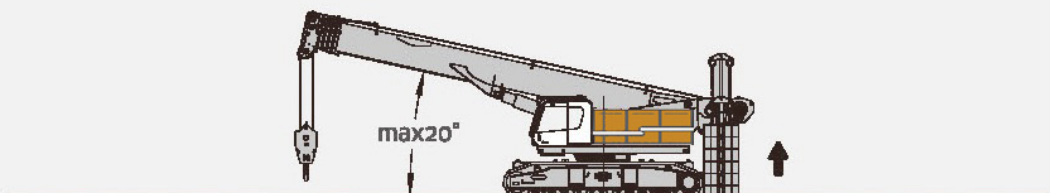
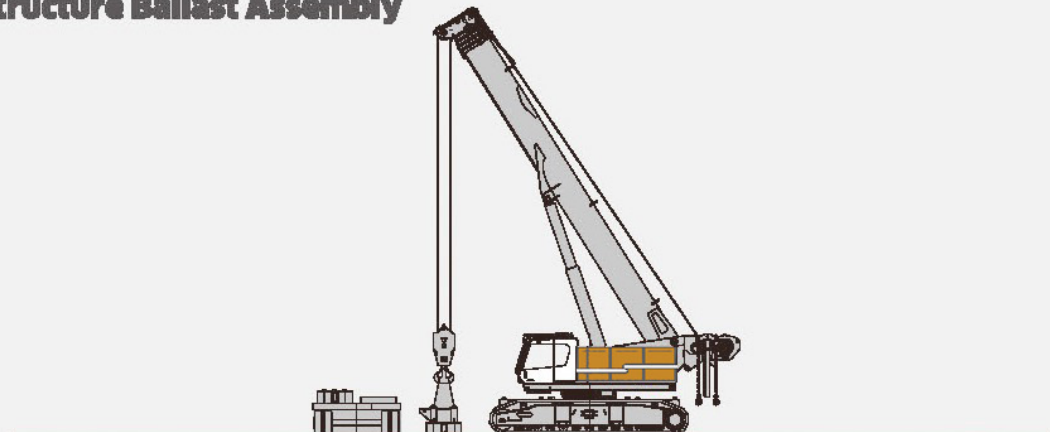


TRANSPORT, DIMENSIONS & WEIGHTS

Central Ballast Assembly



Superstructure Ballast Assembly

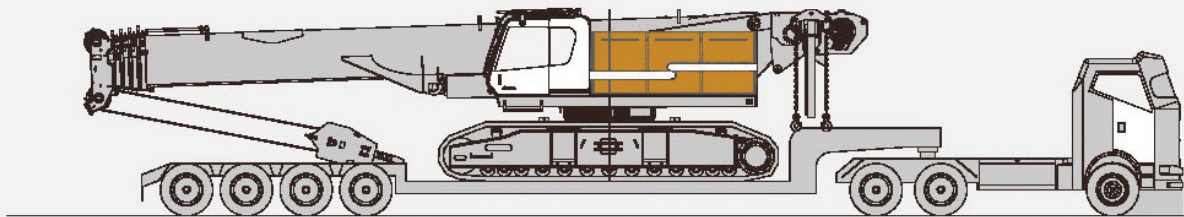


TRANSPORT, DIMENSIONS & WEIGHTS

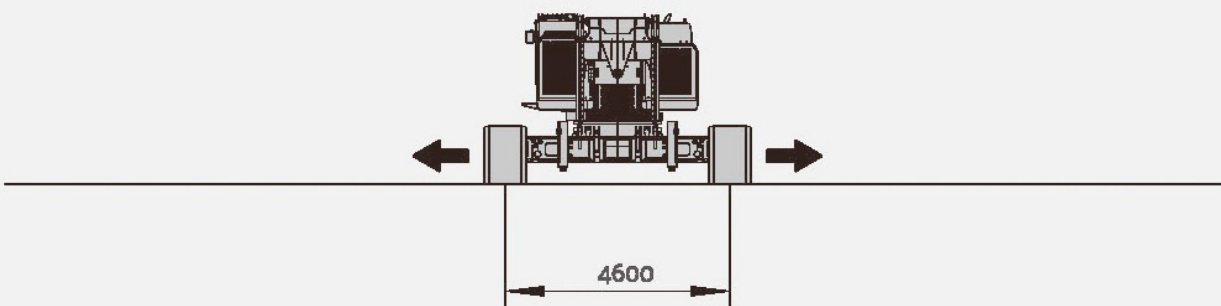
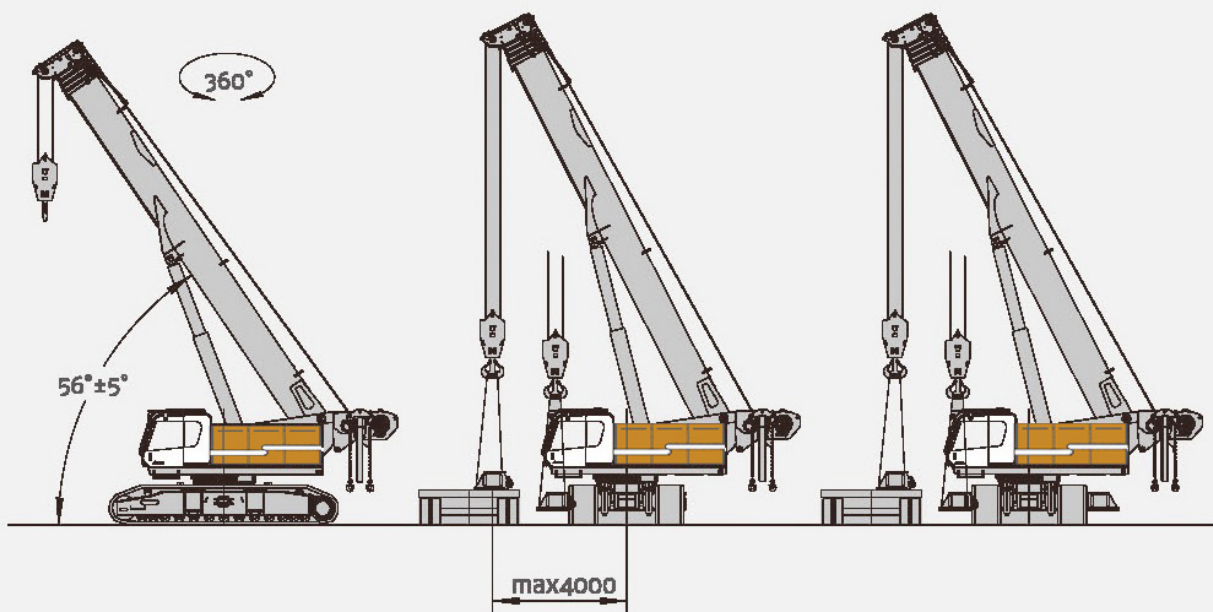
Transportation Plan B

Width: 3500mm

Weight: 70t



Extended Frame Assembly





PV-E CRANE

PV-E Crane B.V.

Everdenberg 17

4902 TT Oosterhout

The Netherlands

+31 (0)184 - 425 949

www.pv-ecrane.com

info@pvecrane.com

THE NEW STANDARD IN ELECTRIC CRAWLER CRANES

