

Telescopic Crawler Crane

MODEL ECT70



Eco-friendly



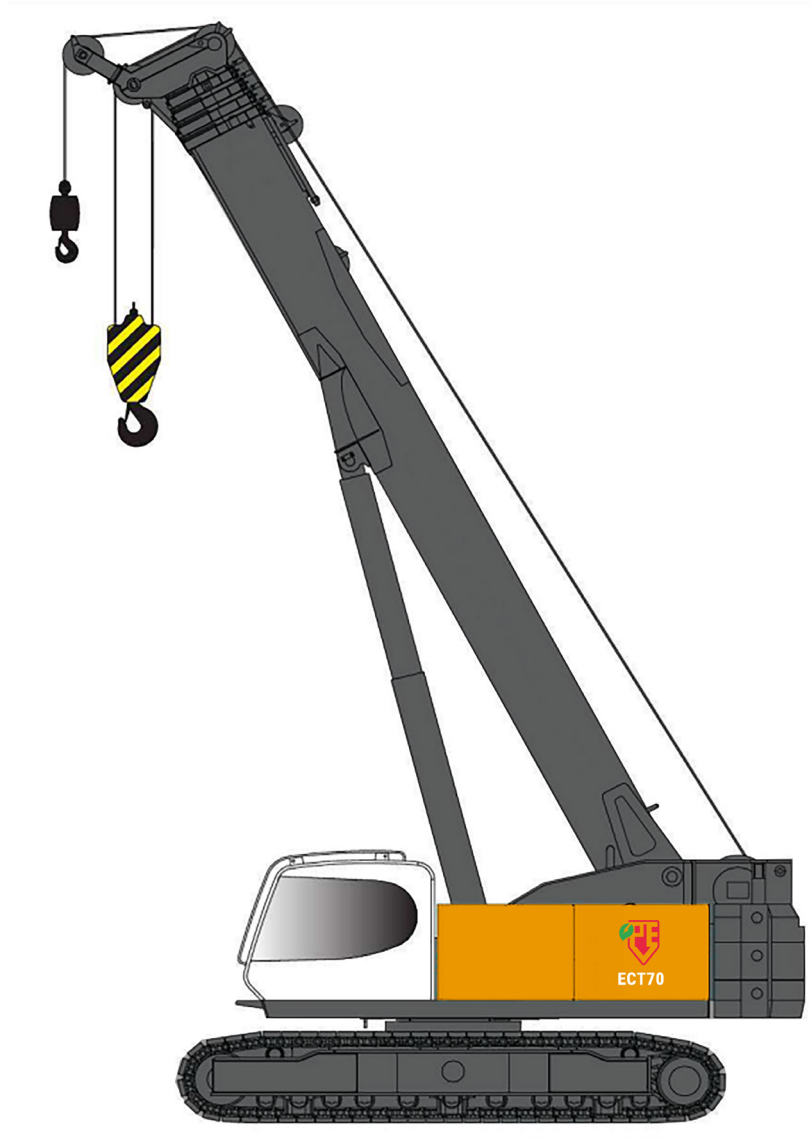
100% electric



Less noise



Zero emission



PV-E Crane B.V.
Everdenberg 17
4902 TT Oosterhout

+31 (0)184 - 425 949
www.pv-ecrane.com
info@pv-ecrane.com



PV-E CRANE

PV-E CRANE

We, PV-E Crane B.V., are pleased to offer you our electric crawler crane EC Series. All models from PV-E Crane ECT series are equipped with an electric motor with a power of 150kW and exchangeable battery packs.

With the standard version, you can work for 8 hours without a plug. If extra working hours are required, this can easily be done by renting or buying an extra battery pack.

The two battery packs are based on lithium iron phosphate batteries (LiFePO4) and are built according to the latest developments in traction cell technology and have many advantages:

- Safe
- Chemically stable
- Long lifespan
- Can be charged from any charge level without shortening lifespan
- Not subject to memory problems
- Efficient

Charging with 45kW per hour from a 63 Amp connection means less than 3 hours per battery of full charging from empty to full.

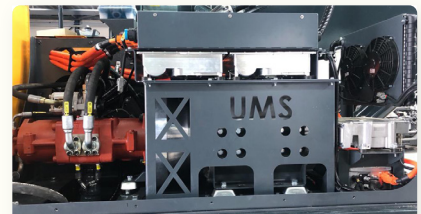
Moreover, (LiFePO4) batteries are 100% maintenance-free and do not need to be topped up with demineralized water like conventional lead-acid batteries, for example. They are 100% recyclable because they do not contain any acids or heavy metals.

An external diagnostic system gives you access to the crane's electronics to read the required data of the crane from your office.



Battery pack

PV-E Crane Battery Powered



Electric motor

PV-E Crane Battery Powered



Electronic control system

PV-E Crane Battery Powered

CONTENTS

1 Features & technical data	Pagina 4
2 Overall dimensions	Pagina 5
3 Machine configuration	Pagina 6
4 Safety device	Pagina 7
5 Notes for load chart	Pagina 8
6 Working range-boom	Pagina 9
7 Boom load chart	Pagina 10
8 Working range-long runner	Pagina 11
9 Long runner load chart	Pagina 12
10 Working range Fixed ib	Pagina 13
11 Fixed jib load chart	Pagina 14 t/m 15
12 Working range fixed jib	Pagina 16
13 Fixed jib load chart	Pagina 17
14 Transportation dimensions and weight	Pagina 18

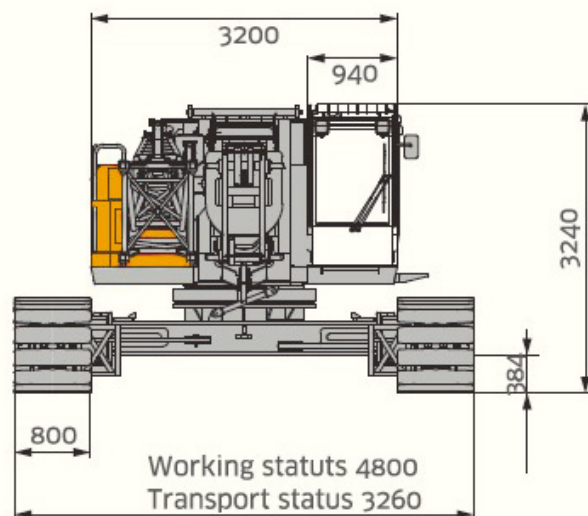
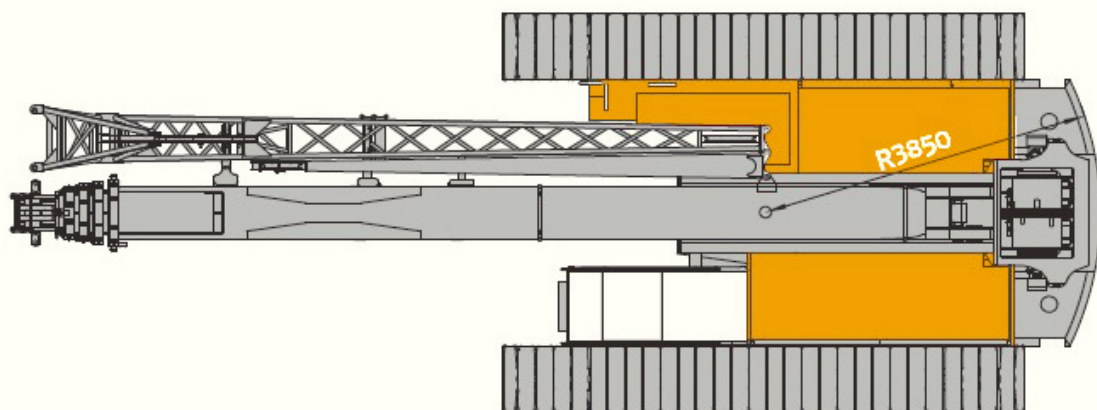
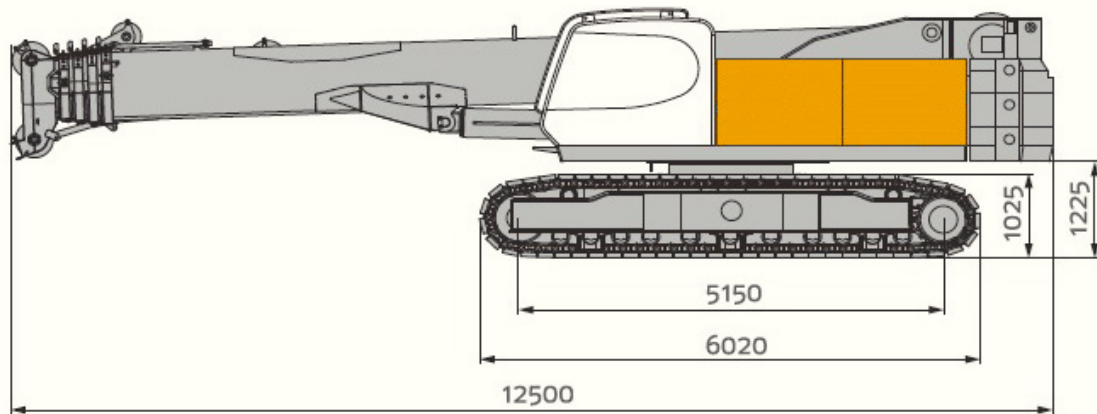


TECHNICAL DATA

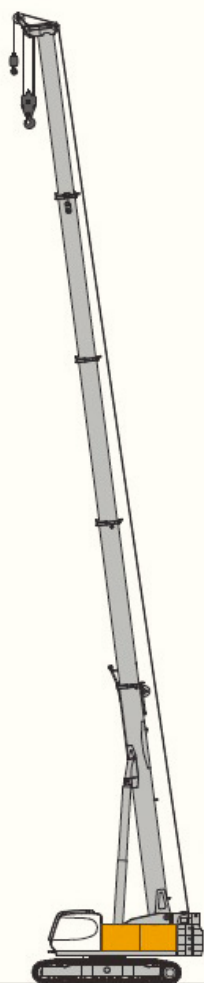
Items	Unit	Data
Max. rated lifting capacity	t	70
Boom length	m	10.8'38
Boom dericking angle	°	-2~83
Jib length	m	8/14(8+6)
Angle between jib and boom	°	0/20/40
Rope speed	m/min	116
Slewing speed	r/min	0~1.96
Travel speed	Km/h	0~1.26/0~2.26
Rope diameter	mm	22
Main/aux. winch rope length	m/m	200/130
Rated single line pull	T(kN)	7.5(73.5)
Gradeability (boom retract, cabin at rear)	%	30
Crane mass	t	70
Overall dimension	mm	12500x3260x3160
Ground bearing pressure	Mpa	0.07



OVERALL DIMENSIONS



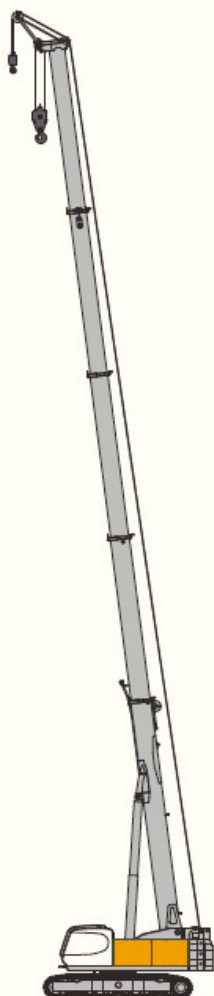
MAIN BOOM & RUNNER CONFIGURATION



Boom

Max. lifting capacity
70t x 3m

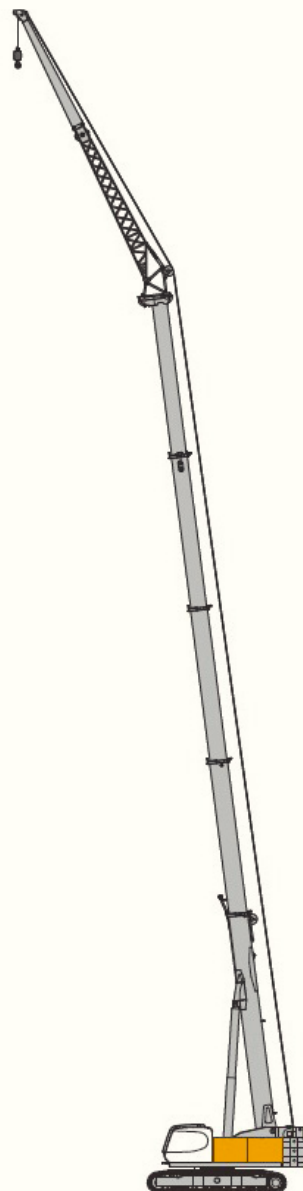
Max. boom combination
38m



Long runner

Max. lifting capacity
7.5t x 14m

Max. boom combination
38 + 2m



Fixed jib

Max. lifting capacity
7.5t x 7m

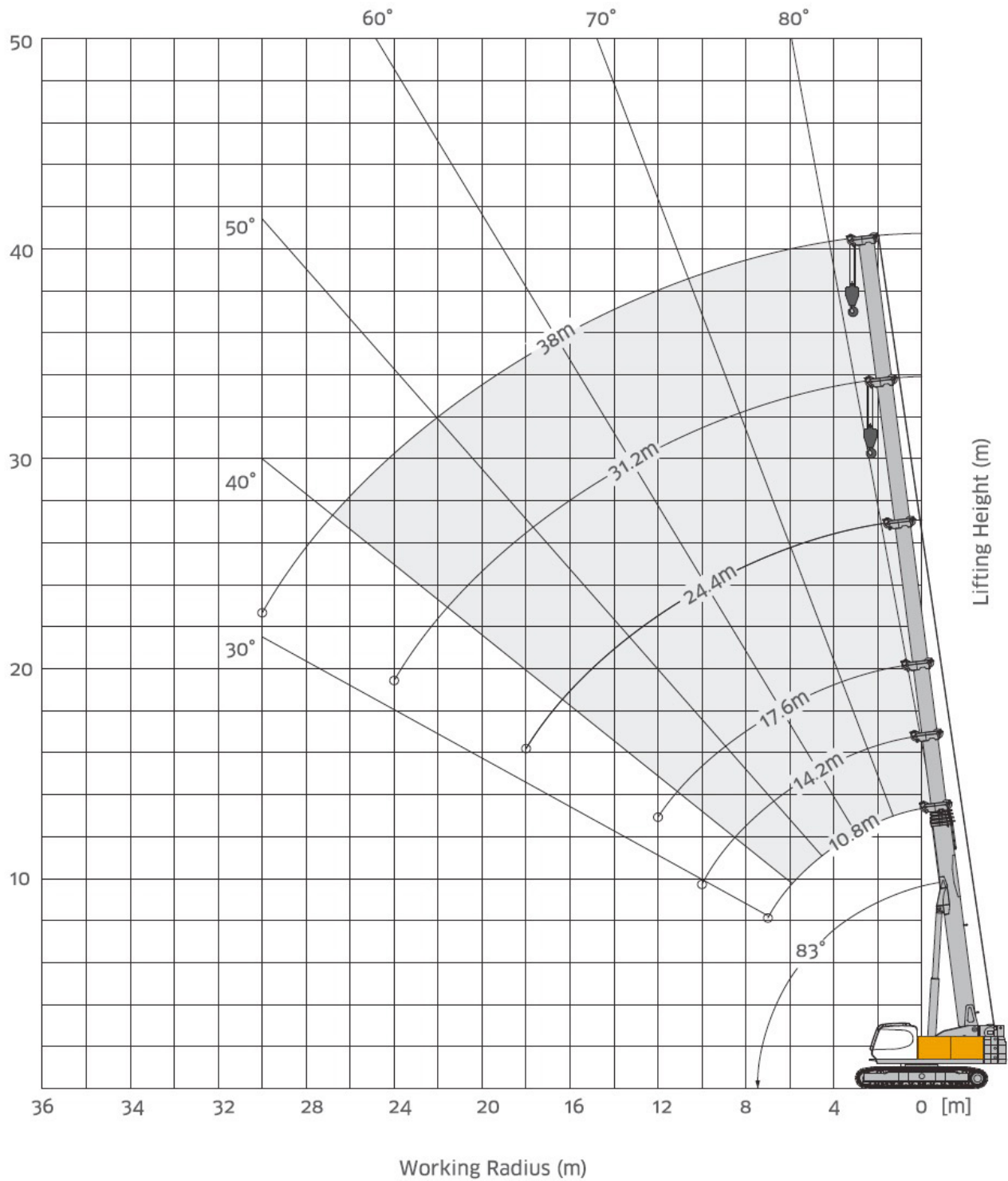
Max. boom combination
38 + 8 + 6m

NOTES | LOAD CHART

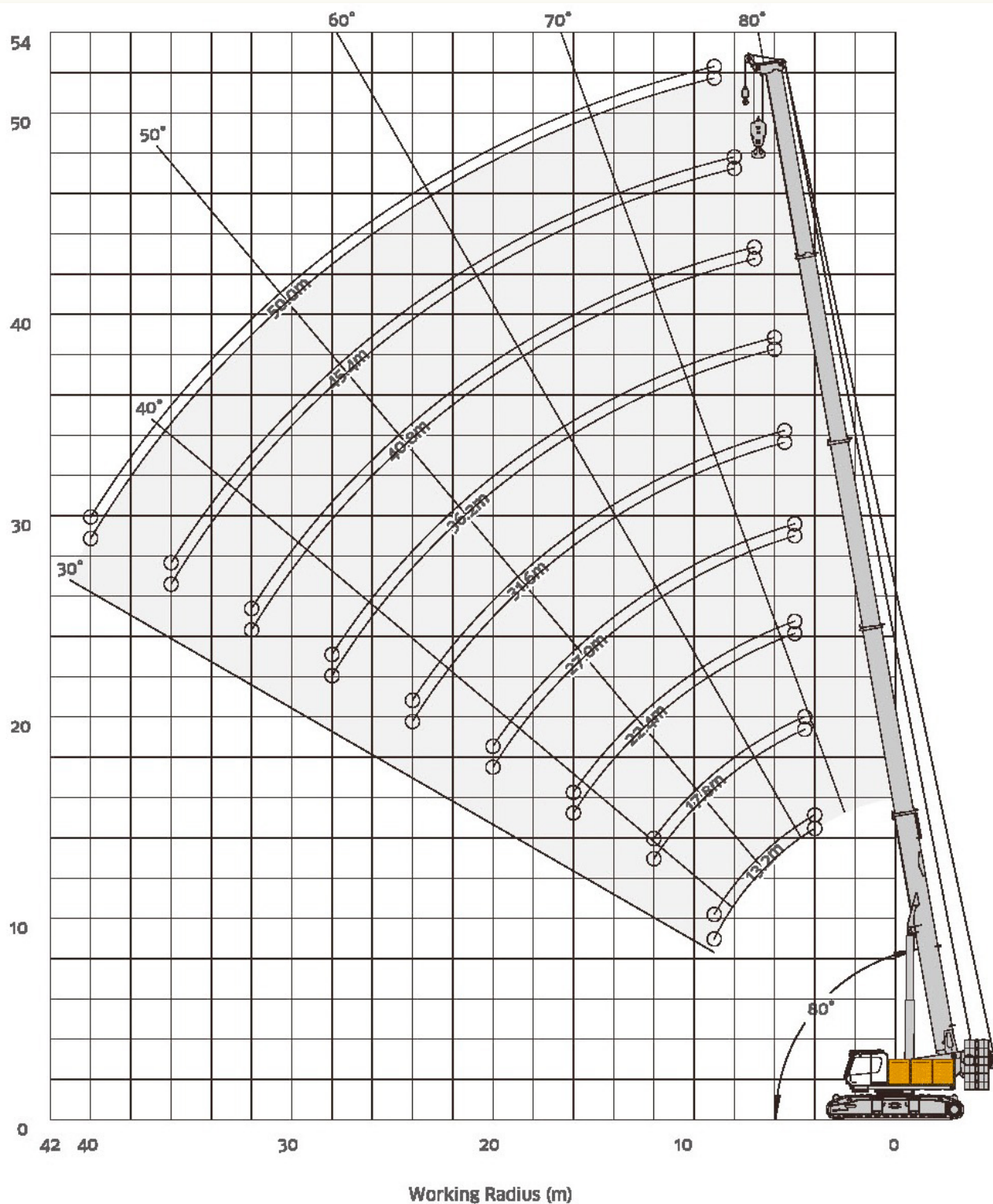
- 1** The load charts are calculated according to EN13000.
- 2** The lifting capacities are for reference only. For actual lifting capacities please refer to the load chart in the cabin or operation manual. The lifting capacities as stated are only valid for lifting activities.
- 3** The rated loads shown are based on the machine on firm horizontal ground level.
- 4** The weights of the lifting accessoires (Hook Blocks, ropes, chains etc.) have to be deducted from the load capacities mentioned.
- 5** The maximum windspeed allowed can be selected within the software of the momentlimiter.
- 6** The radius will be calculated from the center of the machine to the position under the load.
- 7** The lifting capacities apply to 360 degree working.
- 8** Weights mentioned can vary depending on the scope of supply of the specific machine delivered, the content of the tank and the general acceptable tolerances.
- 9** The images in this brochure can show options which are not standard.

Load	No of sheaves	No. lines	Weight
70t	5	10	660kg
9t	0	1	250kg

WORKING RANGE-BOOM



WORKING RANGE-BOOM



BOOM LOAD CHART



10.8m - 38m

Mainboom	Counterweights		Carbody weights			
Load chart	16,2 ton		10 ton			
Length/radius	10,8 m	14,2 m	17,6 m	24,4 m	31,2 m	38 m
2,5 m	70*					
3 m	65,0	60,0	42,0	21,9		
3,5 m	58,0	57,5	42,0	21,9	20,8	
4 m	55,9	55,6	41,3	21,9	20,8	
4,5 m	49,5	49,2	39,8	21,9	20,4	14,7
5 m	46,7	42,8	37,7	21,9	20,1	14,7
6 m	35,4	30,7	30,6	21,9	18,6	14,7
7 m	27,5	27,0	23,3	19,9	17,0	14,5
8 m		21,7	18,5	18,1	15,5	13,8
9 m		17,9	17,6	16,5	14,2	12,5
10 m		15,1	14,8	15,3	13,1	11,6
11 m			12,6	13,7	11,9	10,5
12 m			10,8	11,9	11,0	9,5
14 m				9,2	9,1	8,0
16 m				7,3	7,7	6,8
18 m				5,9	6,4	6,3
20 m					5,3	5,4
22 m					4,4	4,7
24 m					3,6	4,0
26 m						3,3
28 m						2,8
30 m						2,4
32 m						

* Special equipment required.

* Preliminary lifting table, may deviate after calculations / adjustments

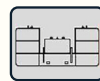
BOOM LOAD CHART



10.8m - 38m



360°



12,5t

Length Radius	10.8m	14.2m	17.6m	24.4m	31.2m	38m
3.0m	60	60	42	19.3		
3.5m	56.9	56.7	42	19.5	18.8	
4.0m	53.8	53.5	41.3	19.7	18	
4.5m	47.2	46.8	39.8	19.9	17.2	11.6
5.0m	38.4	38.1	37.7	20.2	16.5	11.2
6.0m	27.5	27.2	27	20.7	15.2	10.5
7.0m	20.9	20.7	20.5	19.8	14	9.8
8.0m		16.3	16.1	17.6	13	9.2
9.0m		13.2	13	14.4	12.1	8.6
10.0m		10.8	10.7	12	11.3	8.1
11.0m			8.9	10.1	10.6	7.6
12.0m			7.4	8.7	9.3	7.2
14.0m				6.4	7.1	6.4
16.0m				4.8	5.5	5.7
18.0m				3.6	4.3	4.7
20.0m					3.3	3.7
22.0m					2.6	3
24.0m					2	2.3
26.0m						1.8
28.0m						1.4
30.0m						1

* Preliminary lifting table, may deviate after calculations / adjustments

BOOM LOAD CHART



10.8m - 38m



360°



7,8t

Length Radius	10.8m	14.2m	17.6m	24.4m	31.2m	38m
3.0m	57.5	57.5	42	19.3		
3.5m	55	55	42	19.5	18.8	
4.0m	51.1	50.7	41.3	19.7	18	
4.5m	39.8	39.4	39.2	19.9	17.2	11.6
5.0m	32.3	31.9	31.8	20.2	16.5	11.2
6.0m	22.8	22.6	22.4	20.7	15.2	10.5
7.0m	17.2	17	16.8	18.3	14	9.8
8.0m		13.2	13.1	14.5	13	9.2
9.0m		10.5	10.4	11.7	12.1	8.6
10.0m		8.5	8.4	9.7	10.4	8.1
11.0m			6.8	8.1	8.8	7.6
12.0m			5.6	6.8	7.5	7.2
14.0m				4.9	5.5	6
16.0m				3.5	4.2	4.6
18.0m				2.5	3.1	3.5
20.0m					2.3	2.7
22.0m					1.7	2
24.0m					1.1	1.5
26.0m						1.1
28.0m						0.7
30.0m						

* Preliminary lifting table, may deviate after calculations / adjustments

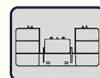
BOOM LOAD CHART



10.8m - 38m



360°

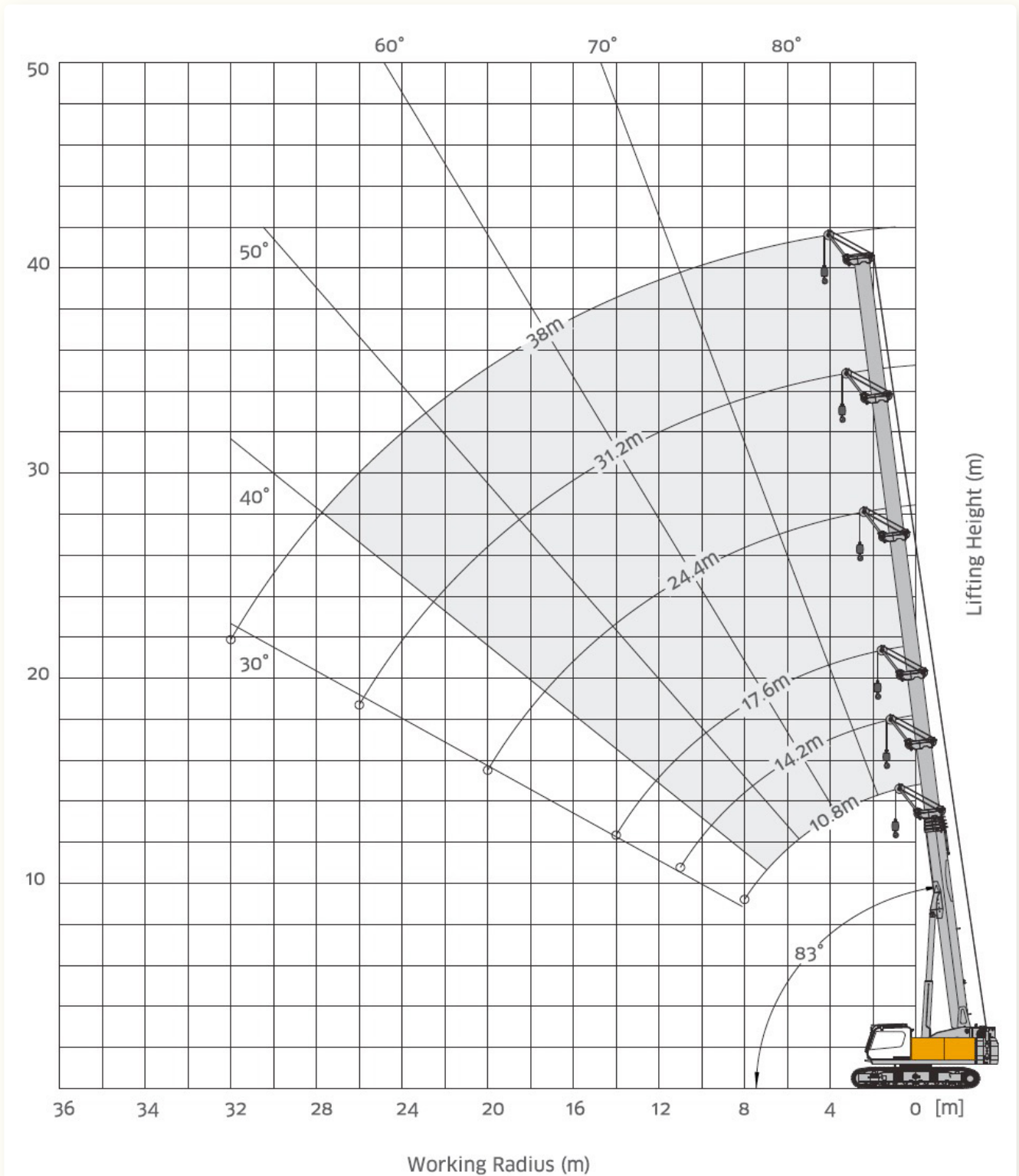


0t

Length Radius	10.8m	14.2m	17.6m	24.4m	31.2m	38m
3.0m	55	55	42	19.3		
3.5m	49.7	49.3	42	19.5	18.8	
4.0m	36	35.6	35.3	19.7	18	
4.5m	27.7	27.4	27.1	19.9	17.2	11.6
5.0m	22.2	21.9	21.7	20.2	16.5	11.2
6.0m	15.3	15	14.9	16.5	15.2	10.5
7.0m	11.1	10.9	10.8	12.3	13.2	9.8
8.0m		8.2	8	9.4	10.3	9.2
9.0m		6.2	6.1	7.4	8.3	8.6
10.0m		4.7	4.6	5.9	6.7	7.2
11.0m			3.5	4.7	5.5	5.9
12.0m			2.5	3.8	4.5	5
14.0m				2.4	3.1	3.5
16.0m				1.4	2	2.5
18.0m				0.6	1.3	1.7
20.0m					0.7	1.1
22.0m						0.6
24.0m						
26.0m						
28.0m						
30.0m						

* Preliminary lifting table, may deviate after calculations / adjustments

WORKING RANGE-LONG RUNNER



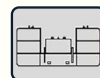
LONG RUNNER LOAD CHART



10.8m - 38m



360°

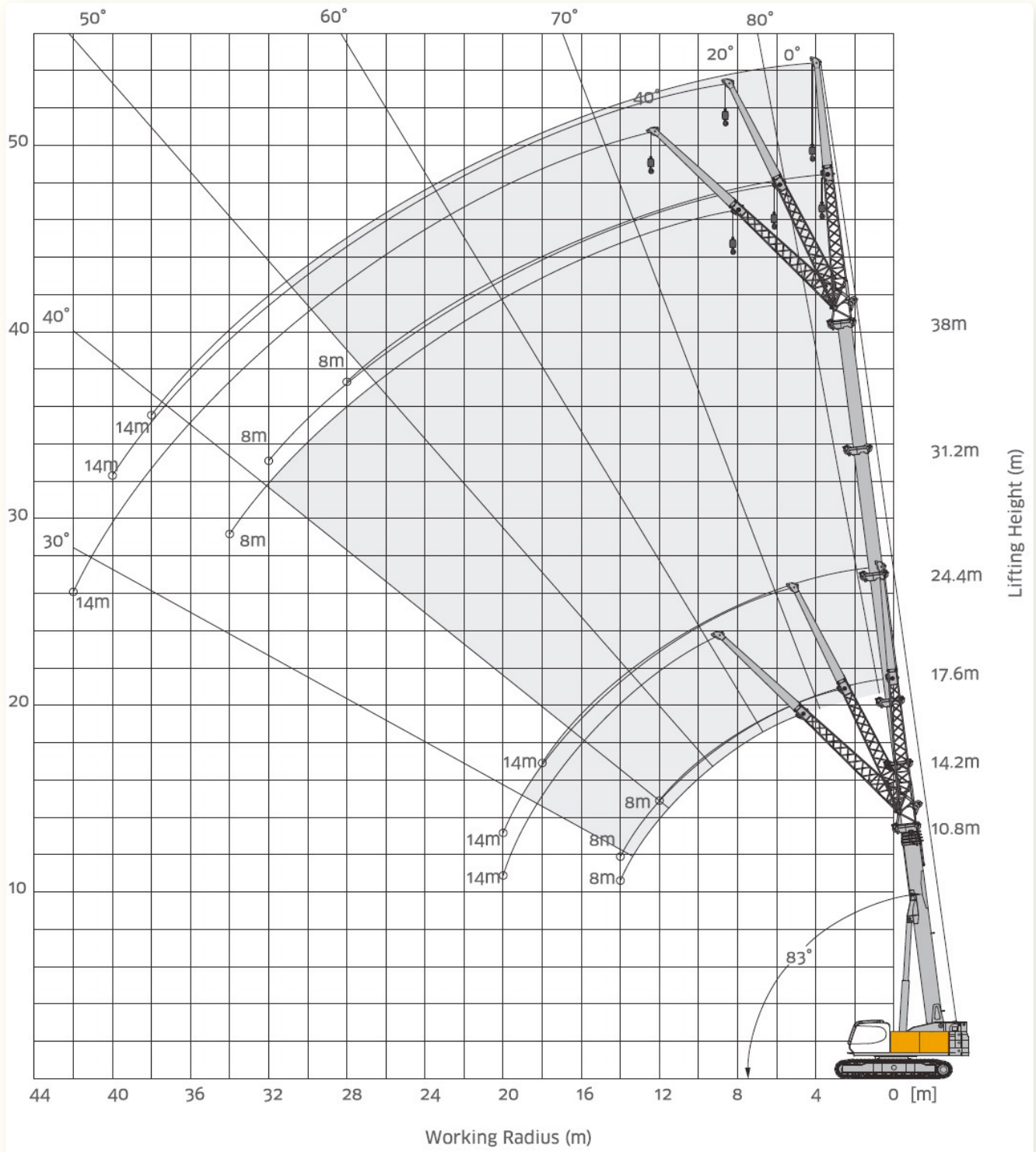


16.1t

Length Radius	10.8m	14.2m	17.6m	24.4m	31.2m	38m
3.0m	7.5	7.5	7.5			
3.5m	7.5	7.5	7.5	7.5		
4.0m	7.5	7.5	7.5	7.5		
4.5m	7.5	7.5	7.5	7.5		
5.0m	7.5	7.5	7.5	7.5	7.5	
6.0m	7.5	7.5	7.5	7.5	7.5	7.5
7.0m	7.5	7.5	7.5	7.5	7.5	7.5
8.0m	7.5	7.5	7.5	7.5	7.5	7.2
9.0m		7.5	7.5	7.5	7.5	6.7
10.0m		7.5	7.5	7.5	7.5	6.3
11.0m		7.5	7.5	7.5	7.5	5.9
12.0m			7.5	7.5	7.5	5.5
14.0m			7	7.5	6.9	4.9
16.0m				6.1	6.2	4.4
18.0m				4.8	5.3	3.9
20.0m				3.7	4.2	3.4
22.0m					3.4	2.89
24.0m					2.6	2.47
26.0m					2.1	2.1
28.0m						1.77
30.0m						1.49
32.0m						1.1

* Preliminary lifting table, may deviate after calculations / adjustments

WORKING RANGE | FIXED JIB



* Preliminary lifting table, may deviate after calculations / adjustments

FIXED JIB LOAD CHART



8m



360°



16.1t

Radius	10.8m			14.2m			17.6m		
	8m			8m			8m		
	0°	20°	40°	0°	20°	40°	0°	20°	40°
3.0m	7.5	6.7		7.5	6.8		7.5		
3.5m	7.5	6.4		7.5	6.5		7.5	6.5	
4.0m	7.5	6.1		7.5	6.3		7.5	6.3	
4.5m	7.5	5.9	4.7	7.5	6.1		7.5	6.1	
5.0m	7.4	5.6	4.6	7.5	5.9	4.6	7.5	5.9	
6.0m	6.6	5.2	4.3	7.5	5.5	4.4	7.5	5.6	4.4
7.0m	6	4.9	4.1	6.8	5.2	4.2	7.4	5.3	4.2
8.0m	5.5	4.6	3.9	6.3	4.9	4.1	6.9	5.1	4.1
9.0m	5.1	4.3	3.8	5.8	4.6	3.9	6.4	4.8	4
10.0m	4.8	4.1	3.6	5.5	4.4	3.8	6	4.6	3.9
11.0m	4.4	3.9	3.5	5.1	4.2	3.7	5.6	4.4	3.8
12.0m	4.2	3.7	3.4	4.8	4.1	3.6	5.3	4.3	3.7
14.0m		3.4	3.3	4.3	3.8	3.4	4.8	4	3.5
16.0m				3.9	3.5	3.3	4.4	3.8	3.4
18.0m							3.9	3.6	3.3
20.0m								3.4	3.3

* Preliminary lifting table, may deviate after calculations / adjustments

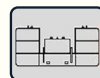
LONG RUNNER LOAD CHART



8m



360°



16.1t

Radius	24.4m			31.2m			38m		
	8m			8m			8m		
	0°	20°	40°	0°	20°	40°	0°	20°	40°
3.0m	7.5			7.5					
3.5m	7.5			7.5					
4.0m	7.5			7.5					
4.5m	7.5	5.8		7.5			6.3		
5.0m	7.5	5.7		7.5			6.2		
6.0m	7.5	5.5		7.5	4.9		5.9		
7.0m	7.5	5.2	4	7.3	4.8		5.7	4.2	
8.0m	7.3	5	3.9	6.9	4.7	3.6	5.5	4.1	
9.0m	6.9	4.9	3.8	6.6	4.5	3.5	5.3	4	3.1
10.0m	6.5	4.7	3.8	6.3	4.4	3.5	5.1	3.9	3.1
11.0m	6.2	4.6	3.7	6.1	4.3	3.4	4.9	3.9	3.1
12.0m	5.9	4.4	3.6	5.9	4.2	3.4	4.8	3.8	3
14.0m	5.4	4.2	3.5	5.5	4.1	3.3	4.5	3.7	3
16.0m	5	4	3.4	4.7	3.9	3.3	4.2	3.6	3
18.0m	3.7	3.8	3.3	3.5	3.8	3.2	3.1	3.5	2.9
20.0m	2.8	3.6	3.3	2.5	3.7	3.2	2.2	3.4	2.9
22.0m	2	2.7	3.1	1.7	2.8	3.1	1.4	2.8	2.9
24.0m	1.4	1.9	2.2	1.1	2	2.5	0.8	2.1	2.7
26.0m		1.3	1.4	0.6	1.4	1.8		1.4	2
28.0m					0.8	1.1		0.9	1.3
30.0m						0.6			0.8

* Preliminary lifting table, may deviate after calculations / adjustments

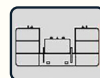
FIXED JIB LOAD CHART



14m



360°



16.1t

Radius	10.8m			14.2m			17.6m		
	14m			14m			14m		
	0°	20°	40°	0°	20°	40°	0°	20°	40°
3.0m	4			4.2			4.2		
3.5m	3.8			4.2			4.2		
4.0m	3.6			4			4.2		
4.5m	3.4			3.8			4.1		
5.0m	3.3			3.6			3.9		
6.0m	3	2.3		3.3	2.3		3.6		
7.0m	2.8	2.1		3	2.2		3.3	2.3	
8.0m	2.6	2		2.8	2.1		3.1	2.2	
9.0m	2.4	1.9	1.6	2.6	2		2.9	2.1	
10.0m	2.2	1.8	1.6	2.5	1.9	1.6	2.7	2	1.6
11.0m	2.1	1.7	1.5	2.3	1.8	1.5	2.6	1.9	1.6
12.0m	2	1.7	1.5	2.2	1.8	1.5	2.4	1.9	1.5
14.0m	1.8	1.5	1.4	2	1.6	1.4	2.2	1.7	1.5
16.0m	1.6	1.4	1.3	1.8	1.5	1.4	2	1.6	1.4
18.0m	1.5	1.4	1.3	1.7	1.4	1.3	1.8	1.5	1.4
20.0m		1.3	1.3	1.5	1.4	1.3	1.7	1.5	1.3
22.0m					1.3	1.3	1.6	1.4	1.3
24.0m							1.5	1.3	1.3
26.0m								1.3	1.3

* Preliminary lifting table, may deviate after calculations / adjustments

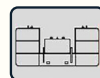
FIXED JIB LOAD CHART



8m



360°

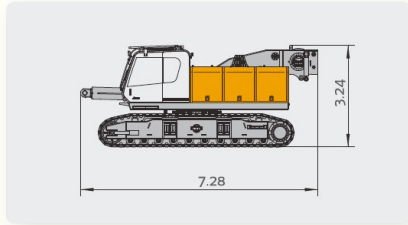


16.1t

Radius	24.4m			31.2m			38m		
	14m			14m			14m		
	0°	20°	40°	0°	20°	40°	0°	20°	40°
3.0m	4.2								
3.5m	4.2								
4.0m	4.2			4.2					
4.5m	4.2			4.2					
5.0m	4.2			4.2			4		
6.0m	4.1			4.2			4		
7.0m	3.8			4.2			4		
8.0m	3.6	2.3		4			4		
9.0m	3.4	2.2		3.8	2.3		4		
10.0m	3.2	2.1		3.6	2.3		4	2.3	
11.0m	3	2.1	1.6	3.4	2.2		3.8	2.3	
12.0m	2.8	2	1.6	3.2	2.1		3.6	2.2	
14.0m	2.6	1.9	1.5	2.9	2	1.6	3.3	2.1	1.6
16.0m	2.3	1.8	1.5	2.7	1.9	1.5	3	2	1.6
18.0m	2.1	1.7	1.4	2.5	1.8	1.5	2.8	1.9	1.5
20.0m	2	1.6	1.4	2.3	1.7	1.4	2.6	1.8	1.5
22.0m	1.9	1.5	1.3	2.1	1.6	1.4	2.4	1.7	1.4
24.0m	1.7	1.5	1.3	2	1.6	1.4	2.2	1.7	1.4
26.0m	1.6	1.4	1.3	1.8	1.5	1.3	1.6	1.6	1.4
28.0m	1.5	1.4	1.3	1.4	1.5	1.3	1.2	1.6	1.4
30.0m	1.2	1.3	1.3	1	1.4	1.3	0.8	1.5	1.3
32.0m		1.1	1.2	0.6	1.2	1.3		1.2	1.3
34.0m					0.8	1		0.8	1.2
36.0m					0.5	0.6		0.5	0.8

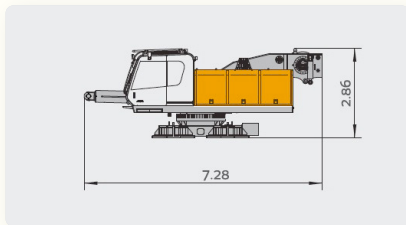
* Preliminary lifting table, may deviate after calculations / adjustments

TRANSPORT | DIMENSIONS & WEIGHTS



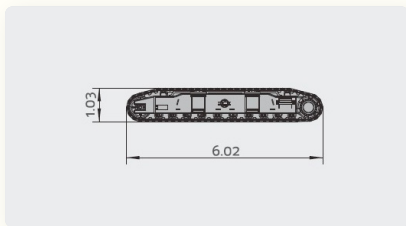
Carbody with crawler x1

Length: 7.28m
Width: 3.28m
Height: 3.24m
Weight: 36000 kg



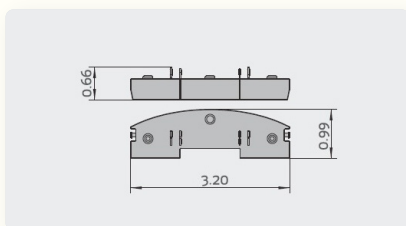
Carbody x1

Length: 7.28m
Width: 3.28m
Height: 2.86m
Weight: 17800 kg



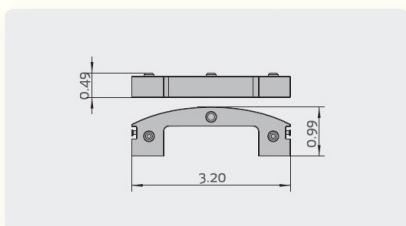
Crawler x2

Length: 16.02m
Width: 1.02m
Height: 1.03m
Weight: 8500 kg



Counterweight x1

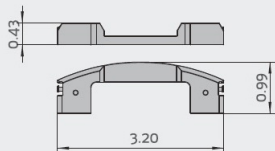
Length: 3.20m
Width: 0.99m
Height: 0.66m
Weight: 7800 kg



Counterweight x1

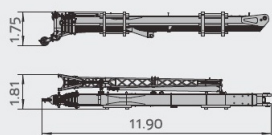
Length: 3.20m
Width: 0.99m
Height: 0.49m
Weight: 4720 kg

LOAD CHART | LUFFING JIB



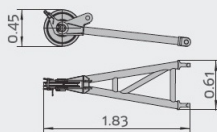
Counterweight

Length: 3.20m
Width: 0.99m
Height: 0.43m
Weight: 37000 kg



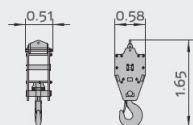
Boom

Length: 11.90m
Width: 1.75m
Height: 1.81m
Weight: 11100 kg



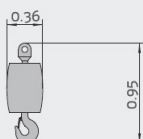
Runner

Length: 1.83m
Width: 0.61m
Height: 0.45m
Weight: 80 kg



65t Hook block

Length: 1.65m
Width: 0.58m
Height: 0.51m
Weight: 660 kg



9t Hook block

Length: 0.95m
Width: 0.36m
Height: 0.36m
Weight: 250 kg

* Preliminary lifting table, may deviate after calculations / adjustments



PV-E CRANE

PV-E Crane B.V.

Everdenberg 17

4902 TT Oosterhout

The Netherlands

+31 (0)184 - 425 949

www.pv-ecrane.com

info@pvecrane.com

THE NEW STANDARD IN ELECTRIC CRAWLER CRANES

